

产品名称: FH(7F1)Mouse Monoclonal Antibody

产品货号: AMM10956

产品概述 (Summary)

描述(Description)	Mouse monoclonal Antibody
宿主(Host)	Mouse
应用(Application)	WB,IHC,ICC/IF
种属反应(Reactivity)	Human,Mouse,Rat
偶联物(Conjugation)	Unconjugated
修饰(Modification)	Unmodified
同种型(Isotype)	IgG
克隆(Clonality)	Monoclonal
剂型(Form)	Liquid
保存条件(Storage)	Store at 4°C short term. Aliquot and store at -20°C long term. Avoid freeze/thaw cycles.
储存溶液(Buffer)	PBS, pH 7.4, containing 0.5%protective protein, 0.02% New type preservative N as Preservative and 50% Glycerol.
纯化 (Purification)	Affinity purification

产品应用(Application)

稀释比(Dilution Ratio)	WB 1:1000-1:3000,IHC 1:50-1:300,ICC/IF 1:100-1:200
分子量(Molecular Weight)	50kDa

抗原信息(Antigen Information)

基因名(Gene Name)	FH
别名(Alternative Names)	Fumarate hydratase, mitochondrial (Fumarase) (EC 4.2.1.2)
基因 ID(Gene ID)	2271.0
SwissProt ID	P07954
免疫原(Immunogen)	Synthetic Peptide of FH

研究背景 (Background)

The protein encoded by this gene is an enzymatic component of the tricarboxylic acid (TCA) cycle, or Krebs cycle, and catalyzes the formation of L-malate from fumarate. It exists in both a cytosolic form and an N-terminal extended form, differing only in the translation start site used. The N-terminal extended form is targeted to the mitochondrion, where the removal of the

extension generates the same form as in the cytoplasm. It is similar to some thermostable class II fumarases and functions as a homotetramer. Mutations in this gene can cause fumarase deficiency and lead to progressive encephalopathy. [provided by RefSeq, Jul 2008],catalytic activity:(S)-malate = fumarate + H₂O.,disease:Defects in FH are the cause of fumarase deficiency (FD) [MIM:606812]; also known as fumaricaciduria. FD is characterized by progressive encephalopathy, developmental delay, hypotonia, cerebral atrophy and lactic and pyruvic acidemia.,disease:Defects in FH are the cause of hereditary leiomyomatosis and renal cell cancer (HLRCC) [MIM:605839].,disease:Defects in FH are the cause of multiple cutaneous and uterine leiomyomata (MCUL1) [MIM:150800]. MCUL1 is an autosomal dominant condition in which affected individuals develop benign smooth muscle tumors (leiomyomata) of the skin. Affected females also usually develop leiomyomata of the uterus (fibroids).,function:Also acts as a tumor suppressor.,miscellaneous:There are 2 substrate binding sites: the catalytic A site, and the non-catalytic B site that may play a role in the transfer of substrate or product between the active site and the solvent. Alternatively, the B site may bind allosteric effectors.,pathway:Carbohydrate metabolism; tricarboxylic acid cycle.,PTM:Isoform Cytoplasmic is acetylated at position 2.,similarity:Belongs to the class-II fumarase/aspartase family. Fumarase subfamily.,subunit:Homotetramer.,

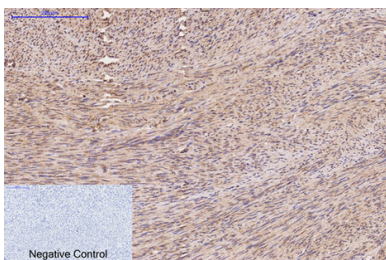
研究领域 (Research Area)

Citrate cycle (TCA cycle);Pathways in cancer;Renal cell carcinoma;

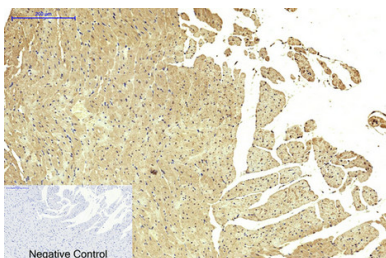
注意事项 (Note)

For research use only.

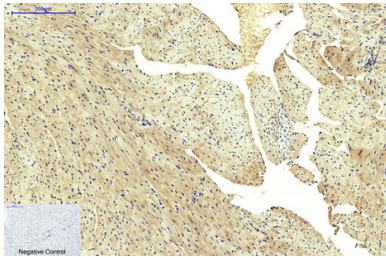
图片 (Image Data)



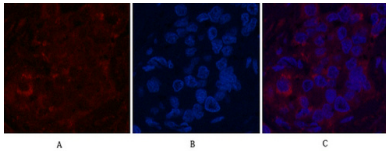
Immunohistochemical analysis of paraffin-embedded Human-uterus tissue. 1,FH Monoclonal Antibody (7F1) was diluted at 1:200 (4°C,overnight) . 2, Sodium citrate pH 6.0 was used for antibody retrieval (>98°C,20min) . 3,Secondary antibody was diluted at 1:200 (room tempeRature, 30min) . Negative control was used by secondary antibody only.



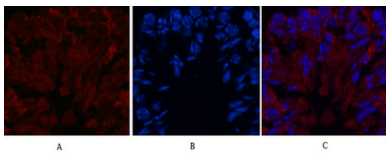
Immunohistochemical analysis of paraffin-embedded Rat-heart tissue. 1,FH Monoclonal Antibody (7F1) was diluted at 1:200 (4°C,overnight) . 2, Sodium citrate pH 6.0 was used for antibody retrieval (>98°C,20min) . 3,Secondary antibody was diluted at 1:200 (room tempeRature, 30min) . Negative control was used by secondary antibody only.



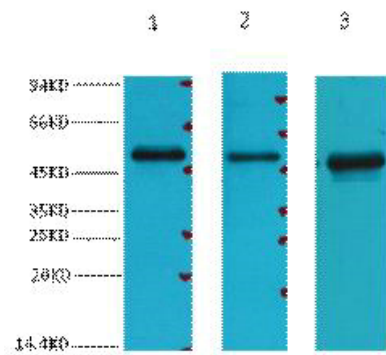
Immunohistochemical analysis of paraffin-embedded Mouse-heart tissue. 1, FH Monoclonal Antibody (7F1) was diluted at 1:200 (4°C, overnight). 2, Sodium citrate pH 6.0 was used for antibody retrieval (>98°C, 20min). 3, Secondary antibody was diluted at 1:200 (room temperature, 30min). Negative control was used by secondary antibody only.



Immunofluorescence analysis of Human-liver-cancer tissue. 1, FH Monoclonal Antibody (7F1) (red) was diluted at 1:200 (4°C, overnight). 2, Cy3 labeled Secondary antibody was diluted at 1:300 (room temperature, 50min). 3, Picture B: DAPI (blue) 10min. Picture A: Target. Picture B: DAPI. Picture C: merge of A+B



Immunofluorescence analysis of Mouse-testis tissue. 1, FH Monoclonal Antibody (7F1) (red) was diluted at 1:200 (4°C, overnight). 2, Cy3 labeled Secondary antibody was diluted at 1:300 (room temperature, 50min). 3, Picture B: DAPI (blue) 10min. Picture A: Target. Picture B: DAPI. Picture C: merge of A+B



Western blot analysis of 1) 293T, 2) HepG2, 3) Hela, diluted at 1:3000.

EnkiLife 优势产品推荐

产品类别	产品货号	产品名称
WB 解决方案	RA10020	2h 极速 WB 即用型全流程试剂盒
	RA10021	4h 快速 WB 即用型全流程试剂盒
	RA10042	5h 畅享版 WB 全流程试剂盒
	RA10037	校准级彩色预染蛋白 Marker (8-180kDa)
	RA10038	校准级彩色预染蛋白 Marker (10-250kDa)
	RA10039	校准级高分子彩色预染蛋白 Marker (25-400kDa)
TSA 多重荧光染色试剂盒	RA10008	TSA 双标三色多重荧光染色试剂盒 (mIHC)
	RA10009	TSA 三标四色多重荧光染色试剂盒 (mIHC)
	RA10010	TSA 四标五色多重荧光染色试剂盒 (mIHC)
	RA10011	TSA 五标六色多重荧光染色试剂盒 (mIHC)
	RA10012	TSA 六标七色多重荧光染色试剂盒 (mIHC)
IHC 检测试剂盒	RA10006	HRP Anti-Mouse/Rabbit IHC Detection System
	RA10007	Polymer-HRP Anti-Mouse/Rabbit IHC Detection System
抗体标记试剂盒	RE80004p	辣根过氧化物酶(HRP)抗体标记试剂盒
	RE80002q	Sulfo-NHS-生物素标记试剂盒
	RE80007p	Cy3 荧光素标记试剂盒
	RE80011p	Fluor488 荧光素标记试剂盒
	RE80017p	Fluor750 荧光素标记试剂盒
	RE80005p	藻红蛋白(R-PE) 抗体快速标记试剂盒
	RE80040	PE-Cy7 串联染料抗体快速标记试剂盒
稳转细胞系构建服务 (免费赠送全膜 WB 验证)	TS-0001	过表达稳转细胞系构建
	TS-0002	敲低稳转细胞系构建
	TS-0003	敲除细胞系构建

限于篇幅，更多产品详见官网：<https://www.enkilife.cn>