

产品名称: MMP2(1H1)Mouse Monoclonal Antibody

产品货号: AMM13989

产品概述 (Summary)

描述(Description)	Mouse monoclonal Antibody
宿主(Host)	Mouse
应用(Application)	WB,IHC,ICC/IF
种属反应(Reactivity)	Human,Rat,Mouse
偶联物(Conjugation)	Unconjugated
修饰(Modification)	Unmodified
同种型(Isotype)	IgG
克隆(Clonality)	Monoclonal
剂型(Form)	Liquid
保存条件(Storage)	Store at 4°C short term. Aliquot and store at -20°C long term. Avoid freeze/thaw cycles.
储存溶液(Buffer)	Liquid in PBS containing 50% glycerol, 0.5% protective protein and 0.02% New type preservative N.
纯化 (Purification)	Affinity purification

产品应用(Application)

稀释比(Dilution Ratio)	WB 1:500-1:2000,IHC 1:100-1:200,ICC/IF 1:50-1:200
分子量(Molecular Weight)	64, 72kDa

抗原信息(Antigen Information)

基因名(Gene Name)	MMP2
别名(Alternative Names)	MMP2
基因 ID(Gene ID)	4313.0
SwissProt ID	P08253
免疫原(Immunogen)	Synthetic Peptide of MMP2 at AA range of INTERNAL

研究背景 (Background)

matrix metalloproteinase 2(MMP2) Homo sapiens This gene is a member of the matrix metalloproteinase (MMP) gene family, that are zinc-dependent enzymes capable of cleaving components of the extracellular matrix and molecules involved in signal transduction. The protein encoded by this gene is a gelatinase A, type IV collagenase, that contains three fibronectin type II

repeats in its catalytic site that allow binding of denatured type IV and V collagen and elastin. Unlike most MMP family members, activation of this protein can occur on the cell membrane. This enzyme can be activated extracellularly by proteases, or, intracellularly by its S-glutathiolation with no requirement for proteolytical removal of the pro-domain. This protein is thought to be involved in multiple pathways including roles in the nervous system, endometrial menstrual breakdown, regulation of vascularization, and metastasis. Mutations in this gene have been associated with Wincatalytic activity: Cleavage of gelatin type I and collagen types IV, V, VII, X. Cleaves the collagen-like sequence Pro-Gln-Gly-[Ile-Ala-Gly-Gln], cofactor: Binds 2 zinc ions per subunit, cofactor: Binds 4 calcium ions per subunit, disease: Defects in MMP2 are the cause of Torg-Winchester syndrome [MIM:259600]; also called multicentric osteolysis nodulosis and arthropathy (MONA). Torg-Winchester syndrome is an autosomal recessive osteolysis syndrome. It is severe with generalized osteolysis and osteopenia. Subcutaneous nodules are usually absent. Torg-Winchester syndrome has been associated with a number of additional features including coarse face, corneal opacities, patches of thickened, hyperpigmented skin, hypertrichosis and gum hypertrophy. However, these features are not always present and have occasionally been observed in other osteolysis syndromes, domain: The conserved cysteine present in the cysteine-switch motif binds the catalytic zinc ion, thus inhibiting the enzyme. The dissociation of the cysteine from the zinc ion upon the activation-peptide release activates the enzyme, enzyme regulation: Inhibited by histatin-3 1/24 (histatin-5), function: In addition to gelatin and collagens, it cleaves KiSS1 at a Gly-[Leu bond], PTM: The propeptide is processed by MMP14 (MT-MMP1) and MMP16 (MT-MMP3), similarity: Belongs to the peptidase M10A family, similarity: Contains 3 fibronectin type-II domains, similarity: Contains 4 hemopexin-like domains, subunit: Ligand for integrin alpha-V/beta-3, tissue specificity: Produced by normal skin fibroblasts,

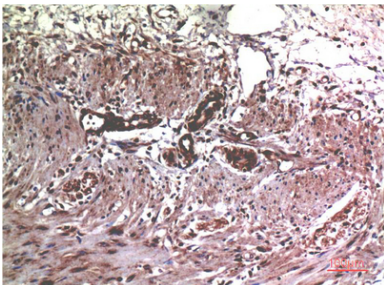
研究领域 (Research Area)

Leukocyte transendothelial migration; GnRH; Pathways in cancer; Bladder cancer;

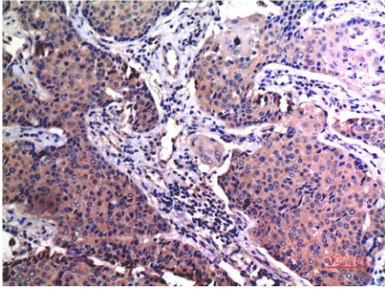
注意事项 (Note)

For research use only.

图片 (Image Data)



Immunohistochemical analysis of paraffin-embedded Human Colon Carcinoma Tissue using MMP2 Mouse mAb diluted at 1:200.



Immunohistochemical analysis of paraffin-embedded Human Breast Carcinoma Tissue using MMP2 Mouse mAb diluted at 1:200.

EnkiLife 优势产品推荐

产品类别	产品货号	产品名称
WB 解决方案	RA10020	2h 极速 WB 即用型全流程试剂盒
	RA10021	4h 快速 WB 即用型全流程试剂盒
	RA10042	5h 畅享版 WB 全流程试剂盒
	RA10037	校准级彩色预染蛋白 Marker (8-180kDa)
	RA10038	校准级彩色预染蛋白 Marker (10-250kDa)
	RA10039	校准级高分子彩色预染蛋白 Marker (25-400kDa)
TSA 多重荧光染色试剂盒	RA10008	TSA 双标三色多重荧光染色试剂盒 (mIHC)
	RA10009	TSA 三标四色多重荧光染色试剂盒 (mIHC)
	RA10010	TSA 四标五色多重荧光染色试剂盒 (mIHC)
	RA10011	TSA 五标六色多重荧光染色试剂盒 (mIHC)
	RA10012	TSA 六标七色多重荧光染色试剂盒 (mIHC)
IHC 检测试剂盒	RA10006	HRP Anti-Mouse/Rabbit IHC Detection System
	RA10007	Polymer-HRP Anti-Mouse/Rabbit IHC Detection System
抗体标记试剂盒	RE80004p	辣根过氧化物酶(HRP)抗体标记试剂盒
	RE80002q	Sulfo-NHS-生物素标记试剂盒
	RE80007p	Cy3 荧光素标记试剂盒
	RE80011p	Fluor488 荧光素标记试剂盒
	RE80017p	Fluor750 荧光素标记试剂盒
	RE80005p	藻红蛋白(R-PE) 抗体快速标记试剂盒
	RE80040	PE-Cy7 串联染料抗体快速标记试剂盒
稳转细胞系构建服务 (免费赠送全膜 WB 验证)	TS-0001	过表达稳转细胞系构建
	TS-0002	敲低稳转细胞系构建
	TS-0003	敲除细胞系构建

限于篇幅，更多产品详见官网：<https://www.enkilife.cn>