

产品名称: Glypican-3 Mouse Monoclonal Antibody

产品货号: AMM20426

产品概述 (Summary)

描述(Description)	Mouse monoclonal Antibody
宿主(Host)	Mouse
应用(Application)	IHC,ELISA
种属反应(Reactivity)	Human
偶联物(Conjugation)	Unconjugated
修饰(Modification)	Unmodified
同种型(Isotype)	IgG
克隆(Clonality)	Monoclonal
剂型(Form)	Liquid
保存条件(Storage)	Store at 4°C short term. Aliquot and store at -20°C long term. Avoid freeze/thaw cycles.
储存溶液(Buffer)	PBS, 50% glycerol, 0.05% Proclin 300, 0.05% protective protein
纯化 (Purification)	Affinity Purification

产品应用(Application)

稀释比(Dilution Ratio)	IHC 1:50-1:200,ELISA 1:500-1:5000
分子量(Molecular Weight)	Calculated MW: 66 kDa; Observed MW: 58 kDa

抗原信息(Antigen Information)

基因名(Gene Name)	GPC3 OCI5
别名(Alternative Names)	Glypican-3;GTR2-2 ;Intestinal protein OCI-5 ;MXR ;[Cleaved into: Secreted glypican-3]
基因 ID(Gene ID)	2719.0
SwissProt ID	P51654
免疫原(Immunogen)	Synthesized peptide derived from human Glypican-3(GPC3) AA range: 400-500

研究背景 (Background)

Cell surface heparan sulfate proteoglycans are composed of a membrane-associated protein core substituted with a variable number of heparan sulfate chains. Members of the glypican-related integral membrane proteoglycan family (GRIPS) contain a core protein anchored to the cytoplasmic membrane via a glycosyl phosphatidylinositol linkage. These proteins may play a role in the control of cell division and growth regulation. The protein encoded by this gene can bind to and inhibit

the dipeptidyl peptidase activity of CD26, and it can induce apoptosis in certain cell types. Deletion mutations in this gene are associated with Simpson-Golabi-Behmel syndrome, also known as Simpson dysmorphia syndrome. Alternative splicing results in multiple transcript variants. [provided by RefSeq, Sep 2009]

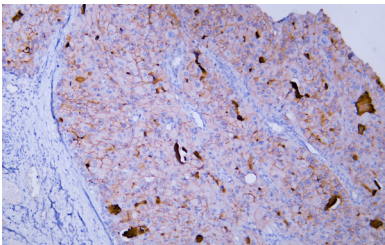
研究领域 (Research Area)

Proteoglycans in cancer

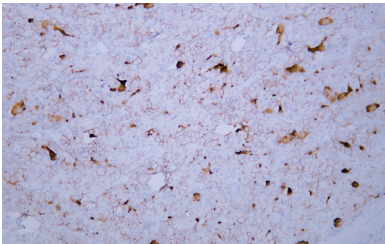
注意事项 (Note)

For research use only.

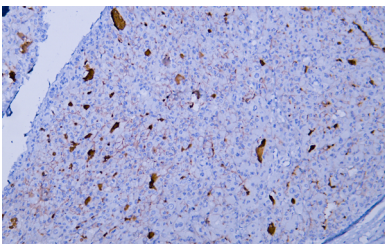
图片 (Image Data)



Human hepatocellular carcinoma tissue was stained with Anti-Glypican-3 Antibody



Human hepatocellular carcinoma tissue was stained with Anti-Glypican-3 Antibody



Human hepatocellular carcinoma tissue was stained with Anti-Glypican-3 Antibody

EnkiLife 优势产品推荐

产品类别	产品货号	产品名称
WB 解决方案	RA10020	2h 极速 WB 即用型全流程试剂盒
	RA10021	4h 快速 WB 即用型全流程试剂盒
	RA10042	5h 畅享版 WB 全流程试剂盒
	RA10037	校准级彩色预染蛋白 Marker (8-180kDa)
	RA10038	校准级彩色预染蛋白 Marker (10-250kDa)
	RA10039	校准级高分子彩色预染蛋白 Marker (25-400kDa)
TSA 多重荧光染色试剂盒	RA10008	TSA 双标三色多重荧光染色试剂盒 (mIHC)
	RA10009	TSA 三标四色多重荧光染色试剂盒 (mIHC)
	RA10010	TSA 四标五色多重荧光染色试剂盒 (mIHC)
	RA10011	TSA 五标六色多重荧光染色试剂盒 (mIHC)
	RA10012	TSA 六标七色多重荧光染色试剂盒 (mIHC)
IHC 检测试剂盒	RA10006	HRP Anti-Mouse/Rabbit IHC Detection System
	RA10007	Polymer-HRP Anti-Mouse/Rabbit IHC Detection System
抗体标记试剂盒	RE80004p	辣根过氧化物酶(HRP)抗体标记试剂盒
	RE80002q	Sulfo-NHS-生物素标记试剂盒
	RE80007p	Cy3 荧光素标记试剂盒
	RE80011p	Fluor488 荧光素标记试剂盒
	RE80017p	Fluor750 荧光素标记试剂盒
	RE80005p	藻红蛋白(R-PE) 抗体快速标记试剂盒
	RE80040	PE-Cy7 串联染料抗体快速标记试剂盒
稳转细胞系构建服务 (免费赠送全膜 WB 验证)	TS-0001	过表达稳转细胞系构建
	TS-0002	敲低稳转细胞系构建
	TS-0003	敲除细胞系构建

限于篇幅，更多产品详见官网：<https://www.enkilife.cn>