

产品名称: EhpB1 Mouse Monoclonal Antibody

产品货号: AMM80630

产品概述 (Summary)

| | |
|-------------------|--|
| 描述(Description) | Mouse monoclonal Antibody |
| 宿主(Host) | Mouse |
| 应用(Application) | WB,IHC,ELISA |
| 种属反应(Reactivity) | Human |
| 偶联物(Conjugation) | Unconjugated |
| 修饰(Modification) | Unmodified |
| 同种型(Isotype) | Mouse IgG1 |
| 克隆(Clonality) | Monoclonal |
| 剂型(Form) | Liquid |
| 保存条件(Storage) | Store at 4°C short term. Aliquot and store at -20°C long term. Avoid freeze/thaw cycles. |
| 储存溶液(Buffer) | Purified antibody in PBS with 0.05% sodium azide. |
| 纯化 (Purification) | Affinity Purification |

产品应用(Application)

| | |
|-----------------------|---|
| 稀释比(Dilution Ratio) | WB 1:500-1:2000,IHC 1:200-1:1000,ELISA 1:5000-1:20000 |
| 分子量(Molecular Weight) | 110kDa |

抗原信息(Antigen Information)

| | |
|-----------------------|---|
| 基因名(Gene Name) | EhpB1 |
| 别名(Alternative Names) | ELK; NET; Hek6; EPHT2; EPHB1 |
| 基因 ID(Gene ID) | 2047.0 |
| SwissProt ID | P54762 |
| 免疫原(Immunogen) | Purified recombinant fragment of EphB1 (aa19-133) expressed in E. Coli. |

研究背景 (Background)

EhpB1: EPH receptor B1. It is a receptor for ephrin-B family members. Ephrin receptors and their ligands, the ephrins, mediate numerous developmental processes, particularly in the nervous system. Based on their structures and sequence relationships, ephrins are divided into the ephrin-A (EFNA) class, which are anchored to the membrane by a glycosylphosphatidylinositol linkage, and the ephrin-B (EFNB) class, which are transmembrane proteins. The Eph family of receptors are divided into 2

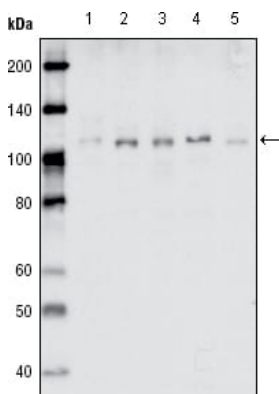
groups based on the similarity of their extracellular domain sequences and their affinities for binding ephrin-A and ephrin-B ligands. Ephrin receptors make up the largest subgroup of the receptor tyrosine kinase (RTK) family.

研究领域 (Research Area)

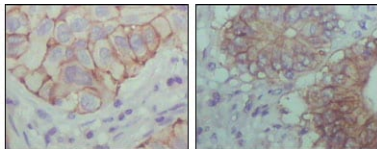
注意事项 (Note)

For research use only.

图片 (Image Data)



Western blot analysis using EhpB1 mouse mAb against MDA-MB-468 (1), MDA-MB-453 (2), MCF-7 (3), T47D (4) and SKBR-3 (5) cell lysate.



Immunohistochemical analysis of paraffin-embedded human lung cancer (left) and colon cancer (right) showing cytoplasmic localization with DAB staining using EphB1 mouse mAb.

EnkiLife 优势产品推荐

| 产品类别 | 产品货号 | 产品名称 |
|-----------------------------|----------|--|
| WB 解决方案 | RA10020 | 2h 极速 WB 即用型全流程试剂盒 |
| | RA10021 | 4h 快速 WB 即用型全流程试剂盒 |
| | RA10042 | 5h 畅享版 WB 全流程试剂盒 |
| | RA10037 | 校准级彩色预染蛋白 Marker (8-180kDa) |
| | RA10038 | 校准级彩色预染蛋白 Marker (10-250kDa) |
| | RA10039 | 校准级高分子彩色预染蛋白 Marker (25-400kDa) |
| TSA 多重荧光染色试剂盒 | RA10008 | TSA 双标三色多重荧光染色试剂盒 (mIHC) |
| | RA10009 | TSA 三标四色多重荧光染色试剂盒 (mIHC) |
| | RA10010 | TSA 四标五色多重荧光染色试剂盒 (mIHC) |
| | RA10011 | TSA 五标六色多重荧光染色试剂盒 (mIHC) |
| | RA10012 | TSA 六标七色多重荧光染色试剂盒 (mIHC) |
| IHC 检测试剂盒 | RA10006 | HRP Anti-Mouse/Rabbit IHC Detection System |
| | RA10007 | Polymer-HRP Anti-Mouse/Rabbit IHC Detection System |
| 抗体标记试剂盒 | RE80004p | 辣根过氧化物酶(HRP)抗体标记试剂盒 |
| | RE80002q | Sulfo-NHS-生物素标记试剂盒 |
| | RE80007p | Cy3 荧光素标记试剂盒 |
| | RE80011p | Fluor488 荧光素标记试剂盒 |
| | RE80017p | Fluor750 荧光素标记试剂盒 |
| | RE80005p | 藻红蛋白(R-PE) 抗体快速标记试剂盒 |
| | RE80040 | PE-Cy7 串联染料抗体快速标记试剂盒 |
| 稳转细胞系构建服务 (免费赠送全膜 WB 验证) | TS-0001 | 过表达稳转细胞系构建 |
| | TS-0002 | 敲低稳转细胞系构建 |
| | TS-0003 | 敲除细胞系构建 |

限于篇幅，更多产品详见官网：<https://www.enkilife.cn>