

产品名称: MRE11 Mouse Monoclonal Antibody

产品货号: AMM80676

产品概述 (Summary)

描述(Description)	Mouse monoclonal Antibody
宿主(Host)	Mouse
应用(Application)	IHC,ELISA,FC
种属反应(Reactivity)	Human, Mouse, Rat, Rabbit
偶联物(Conjugation)	Unconjugated
修饰(Modification)	Unmodified
同种型(Isotype)	Mouse IgG1
克隆(Clonality)	Monoclonal
剂型(Form)	Liquid
保存条件(Storage)	Store at 4°C short term. Aliquot and store at -20°C long term. Avoid freeze/thaw cycles.
储存溶液(Buffer)	PBS containing 0.03% sodium azide.
纯化 (Purification)	Affinity Purification

产品应用(Application)

稀释比(Dilution Ratio)	IHC 1:200-1:1000,ELISA 1:5000-1:20000,FC 1:200-1:400
分子量(Molecular Weight)	/

抗原信息(Antigen Information)

基因名(Gene Name)	ERBB3
别名(Alternative Names)	HER3; LCCS2
基因 ID(Gene ID)	2065.0
SwissProt ID	P21860
免疫原(Immunogen)	Purified recombinant fragment of ERBB3 (aa1175-1275) expressed in E. Coli.

研究背景 (Background)

ERBB3: v-erb-b2 erythroblastic leukemia viral oncogene homolog 3 (avian). This gene encodes a member of the epidermal growth factor receptor (EGFR) family of receptor tyrosine kinases. This membrane-bound protein has a neuregulin binding domain but not an active kinase domain. It therefore can bind this ligand but not convey the signal into the cell through protein phosphorylation. However, it does form heterodimers with other EGF receptor family members which do have kinase activity.

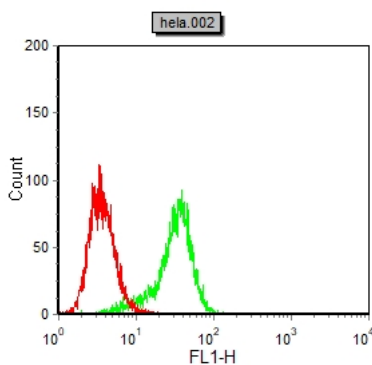
Heterodimerization leads to the activation of pathways which lead to cell proliferation or differentiation. Amplification of this gene and/or overexpression of its protein have been reported in numerous cancers, including prostate, bladder, and breast tumors. Alternate transcriptional splice variants encoding different isoforms have been characterized. One isoform lacks the intermembrane region and is secreted outside the cell. This form acts to modulate the activity of the membrane-bound form. Additional splice variants have also been reported, but they have not been thoroughly characterized.

研究领域 (Research Area)

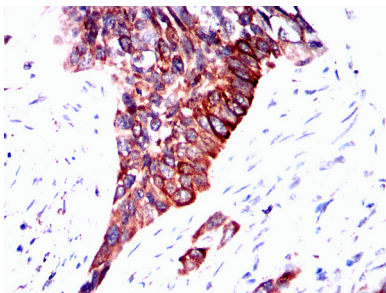
注意事项 (Note)

For research use only.

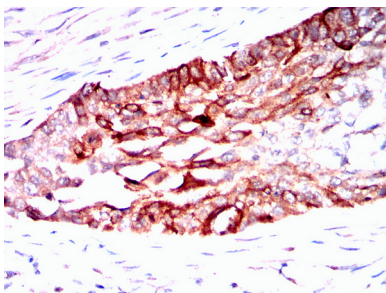
图片 (Image Data)



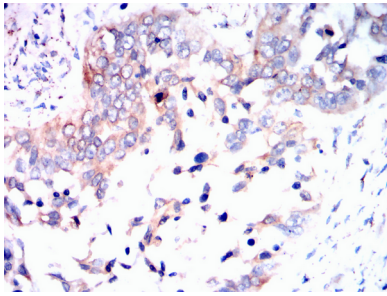
Flow cytometric analysis of HeLa cells using ERBB3 mouse mAb (green) and negative control (red).



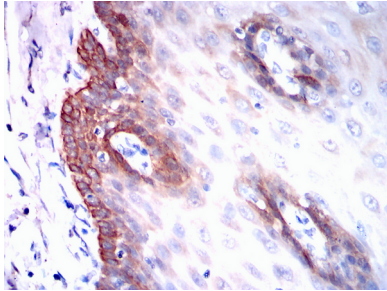
Immunohistochemical analysis of paraffin-embedded lung cancer tissues using ERBB3 mouse mAb with DAB staining.



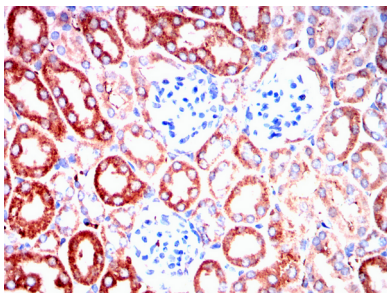
Immunohistochemical analysis of paraffin-embedded lung cancer tissues using ERBB3 mouse mAb with DAB staining.



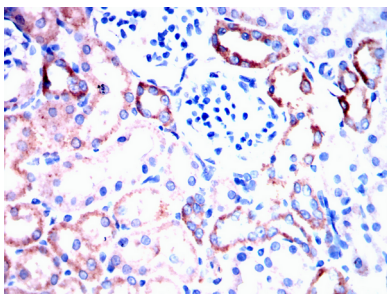
Immunohistochemical analysis of paraffin-embedded esophageal cancer tissues using ERBB3 mouse mAb with DAB staining.



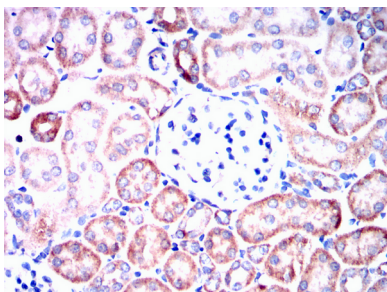
Immunohistochemical analysis of paraffin-embedded esophagus tissues using *** mouse mAb with DAB staining.



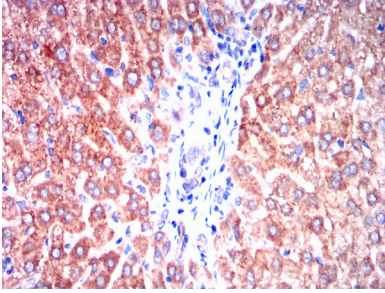
Immunohistochemical analysis of paraffin-embedded mouse kidney tissues using ERBB3 mouse mAb with DAB staining.



Immunohistochemical analysis of paraffin-embedded rat kidney tissues using ERBB3 mouse mAb with DAB staining.



Immunohistochemical analysis of paraffin-embedded rabbit kidney tissues using ERBB3 mouse mAb with DAB staining.



Immunohistochemical analysis of paraffin-embedded rabbit liver tissues using ERBB3 mouse mAb with DAB staining.

EnkiLife 优势产品推荐

产品类别	产品货号	产品名称
WB 解决方案	RA10020	2h 极速 WB 即用型全流程试剂盒
	RA10021	4h 快速 WB 即用型全流程试剂盒
	RA10042	5h 畅享版 WB 全流程试剂盒
	RA10037	校准级彩色预染蛋白 Marker (8-180kDa)
	RA10038	校准级彩色预染蛋白 Marker (10-250kDa)
	RA10039	校准级高分子彩色预染蛋白 Marker (25-400kDa)
TSA 多重荧光染色试剂盒	RA10008	TSA 双标三色多重荧光染色试剂盒 (mIHC)
	RA10009	TSA 三标四色多重荧光染色试剂盒 (mIHC)
	RA10010	TSA 四标五色多重荧光染色试剂盒 (mIHC)
	RA10011	TSA 五标六色多重荧光染色试剂盒 (mIHC)
	RA10012	TSA 六标七色多重荧光染色试剂盒 (mIHC)
IHC 检测试剂盒	RA10006	HRP Anti-Mouse/Rabbit IHC Detection System
	RA10007	Polymer-HRP Anti-Mouse/Rabbit IHC Detection System
抗体标记试剂盒	RE80004p	辣根过氧化物酶(HRP)抗体标记试剂盒
	RE80002q	Sulfo-NHS-生物素标记试剂盒
	RE80007p	Cy3 荧光素标记试剂盒
	RE80011p	Fluor488 荧光素标记试剂盒
	RE80017p	Fluor750 荧光素标记试剂盒
	RE80005p	藻红蛋白(R-PE) 抗体快速标记试剂盒
	RE80040	PE-Cy7 串联染料抗体快速标记试剂盒
稳转细胞系构建服务 (免费赠送全膜 WB 验证)	TS-0001	过表达稳转细胞系构建
	TS-0002	敲低稳转细胞系构建
	TS-0003	敲除细胞系构建

限于篇幅，更多产品详见官网：<https://www.enkilife.cn>