

产品名称: SNAI1 Rabbit Polyclonal Antibody

产品货号: APRab03386

产品概述 (Summary)

描述(Description)	Rabbit polyclonal Antibody
宿主(Host)	Rabbit
应用(Application)	WB,IHC,ICC/IF,ELISA
种属反应(Reactivity)	Human,Mouse
偶联物(Conjugation)	Unconjugated
修饰(Modification)	Unmodified
同种型(Isotype)	IgG
克隆(Clonality)	Polyclonal
剂型(Form)	Liquid
保存条件(Storage)	Store at 4°C short term. Aliquot and store at -20°C long term. Avoid freeze/thaw cycles.
储存溶液(Buffer)	Liquid in PBS containing 50% glycerol, 0.5% protective protein and 0.02% sodium azide, pH 7.3.
纯化 (Purification)	Affinity Purification

产品应用(Application)

稀释比(Dilution Ratio)	WB 1:500-1:1000,IHC 1:50-1:100,ICC/IF 1:50-1:200,ELISA 1:5000-1:20000
分子量(Molecular Weight)	Calculated MW: 29 kDa; Observed MW: 29 kDa

抗原信息(Antigen Information)

基因名(Gene Name)	SNAI1
别名(Alternative Names)	SNAH; Zinc finger protein SNAI1; Protein snail homolog 1; Protein sna
基因 ID(Gene ID)	6615
SwissProt ID	O95863
免疫原(Immunogen)	The antiserum was produced against synthesized peptide derived from human SNAI1. AA range:215-264

研究背景 (Background)

Snail is a zinc-finger transcription factor that can repress E-cadherin transcription. Downregulation of E-cadherin is associated with epithelial-mesenchymal transition during embryonic development, a process also exploited by invasive cancer cells .

Indeed, loss of E-cadherin expression is correlated with the invasive properties of some tumors and there is a considerable inverse correlation between Snail and E-cadherin mRNA levels in epithelial tumor cell lines . In addition, Snail blocks the cell cycle and confers resistance to cell death . Phosphorylation of Snail by GSK-3 and PAK1 regulates its stability, cellular localization and function .Tissue specificity: Expressed in a variety of tissues with the highest expression in kidney.

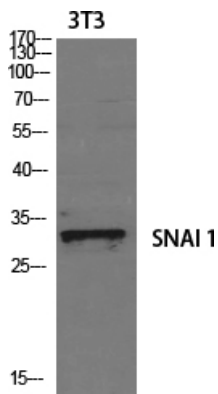
研究领域 (Research Area)

Epigenetics and Nuclear Signaling

注意事项 (Note)

For research use only.

图片 (Image Data)



Western blot analysis of SNAI1 in 3T3 lysates using SNAI1 antibody.

EnkiLife 优势产品推荐

产品类别	产品货号	产品名称
WB 解决方案	RA10020	2h 极速 WB 即用型全流程试剂盒
	RA10021	4h 快速 WB 即用型全流程试剂盒
	RA10042	5h 畅享版 WB 全流程试剂盒
	RA10037	校准级彩色预染蛋白 Marker (8-180kDa)
	RA10038	校准级彩色预染蛋白 Marker (10-250kDa)
	RA10039	校准级高分子彩色预染蛋白 Marker (25-400kDa)
TSA 多重荧光染色试剂盒	RA10008	TSA 双标三色多重荧光染色试剂盒 (mIHC)
	RA10009	TSA 三标四色多重荧光染色试剂盒 (mIHC)
	RA10010	TSA 四标五色多重荧光染色试剂盒 (mIHC)
	RA10011	TSA 五标六色多重荧光染色试剂盒 (mIHC)
	RA10012	TSA 六标七色多重荧光染色试剂盒 (mIHC)
IHC 检测试剂盒	RA10006	HRP Anti-Mouse/Rabbit IHC Detection System
	RA10007	Polymer-HRP Anti-Mouse/Rabbit IHC Detection System
抗体标记试剂盒	RE80004p	辣根过氧化物酶(HRP)抗体标记试剂盒
	RE80002q	Sulfo-NHS-生物素标记试剂盒
	RE80007p	Cy3 荧光素标记试剂盒
	RE80011p	Fluor488 荧光素标记试剂盒
	RE80017p	Fluor750 荧光素标记试剂盒
	RE80005p	藻红蛋白(R-PE) 抗体快速标记试剂盒
	RE80040	PE-Cy7 串联染料抗体快速标记试剂盒
稳转细胞系构建服务 (免费赠送全膜 WB 验证)	TS-0001	过表达稳转细胞系构建
	TS-0002	敲低稳转细胞系构建
	TS-0003	敲除细胞系构建

限于篇幅，更多产品详见官网：<https://www.enkilife.cn>