

**产品名称:** Btk (phospho Tyr223) Rabbit Polyclonal Antibody

**产品货号:** APRab04335

## 产品概述 (Summary)

描述(Description)	Rabbit polyclonal Antibody
宿主(Host)	Rabbit
应用(Application)	WB,ELISA
种属反应(Reactivity)	Human,Mouse,Rat
偶联物(Conjugation)	Unconjugated
修饰(Modification)	Phosphorylated
同种型(Isotype)	IgG
克隆(Clonality)	Polyclonal
剂型(Form)	Liquid
保存条件(Storage)	Store at 4°C short term. Aliquot and store at -20°C long term. Avoid freeze/thaw cycles.
储存溶液(Buffer)	Liquid in PBS containing 50% glycerol, 0.5% protective protein and 0.02% New type preservative N.
纯化 (Purification)	Affinity purification

## 产品应用(Application)

稀释比(Dilution Ratio)	WB 1:500-1:2000,ELISA 1:20000-1:40000
分子量(Molecular Weight)	80kDa

## 抗原信息(Antigen Information)

基因名(Gene Name)	BTK
别名(Alternative Names)	BTK; AGMX1; ATK; BPK; Tyrosine-protein kinase BTK; Agammaglobulinaemia tyrosine kinase; ATK; B-cell progenitor kinase; BPK; Bruton tyrosine kinase
基因 ID(Gene ID)	695.0
SwissProt ID	Q06187
免疫原(Immunogen)	The antiserum was produced against synthesized peptide derived from human BTK around the phosphorylation site of Tyr223. AA range:188-237

## 研究背景 (Background)

The protein encoded by this gene plays a crucial role in B-cell development. Mutations in this gene cause X-linked

agammaglobulinemia type 1, which is an immunodeficiency characterized by the failure to produce mature B lymphocytes, and associated with a failure of Ig heavy chain rearrangement. Alternative splicing results in multiple transcript variants encoding different isoforms. [provided by RefSeq, Dec 2013],catalytic activity:ATP + a [protein]-L-tyrosine = ADP + a [protein]-L-tyrosine phosphate.,cofactor: Binds 1 zinc ion per subunit.,disease: Defects in BTK are the cause of X-linked agammaglobulinemia (XLA) [MIM:300755]; also called X-linked agammaglobulinemia type 1 (AGMX1) or immunodeficiency type 1 (IMD1). XLA is a humoral immunodeficiency disease which results in developmental defects in the maturation pathway of B-cells. Affected boys have normal levels of pre-B-cells in their bone marrow but virtually no circulating mature B-lymphocytes. This results in a lack of immunoglobulins of all classes and leads to recurrent bacterial infections like otitis, conjunctivitis, dermatitis, sinusitis in the first few years of life, or even some patients present overwhelming sepsis or meningitis, resulting in death in a few hours. Treatment in most cases is by infusion of intravenous immunoglobulin.,disease: Defects in BTK may be the cause of X-linked hypogammaglobulinemia and isolated growth hormone deficiency (XLA-IGHD) [MIM:307200]; also known as agammaglobulinemia and isolated growth hormone deficiency or Fleisher syndrome or isolated growth hormone deficiency type 3 (IGHD3). In rare cases XLA is inherited together with isolated growth hormone deficiency (IGHD),enzyme regulation: Inhibited by IBTK. Activated by phosphorylation.,function: Plays a crucial role in B-cell ontogeny. Transiently phosphorylates GTF2I on tyrosine residues in response to B-cell receptor cross-linking. Required for the formation of functional ARID3A DNA-binding complexes.,online information: BTK mutation db,PTM: Autophosphorylated on Tyr-223 and Tyr-551. Phosphorylation of Tyr-223 may create a docking site for a SH2 containing protein.,similarity: Belongs to the protein kinase superfamily. Tyr protein kinase family.,similarity: Belongs to the protein kinase superfamily. Tyr protein kinase family. TEC subfamily.,similarity: Contains 1 Btk-type zinc finger.,similarity: Contains 1 PH domain.,similarity: Contains 1 protein kinase domain.,similarity: Contains 1 SH2 domain.,similarity: Contains 1 SH3 domain.,subunit: Binds GTF2I through the PH domain. Interacts with SH3BP5 via the SH3 domain. Interacts with IBTK via its PH domain. Interacts with GTF2I and ARID3A,

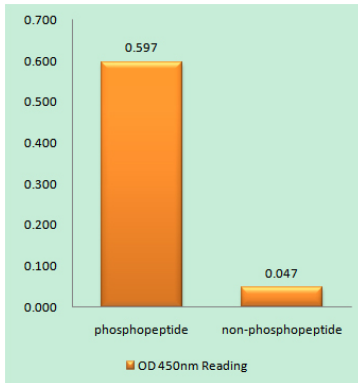
### 研究领域 (Research Area)

B\_Cell\_Antigen;Fc epsilon RI;Primary immunodeficiency;

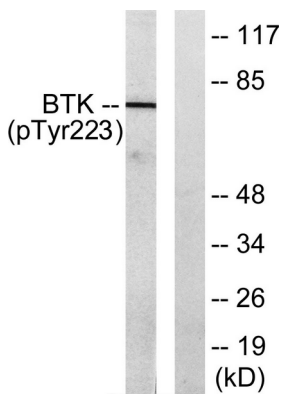
### 注意事项 (Note)

For research use only.

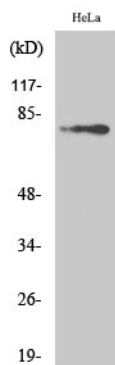
### 图片 (Image Data)



Enzyme-Linked Immunosorbent Assay ( Phospho-ELISA ) for Immunogen Phosphopeptide (Phospho-left) and Non-Phosphopeptide (Phospho-right) , using BTK (Phospho-Tyr223) Antibody



Western blot analysis of lysates from HeLa cells treated with Serum 10% 15', using BTK (Phospho-Tyr223) Antibody. The lane on the right is blocked with the phospho peptide.



Western Blot analysis of various cells using Phospho-Btk (Y223) Polyclonal Antibody

## EnkiLife 优势产品推荐

产品类别	产品货号	产品名称
WB 解决方案	RA10020	2h 极速 WB 即用型全流程试剂盒
	RA10021	4h 快速 WB 即用型全流程试剂盒
	RA10042	5h 畅享版 WB 全流程试剂盒
	RA10037	校准级彩色预染蛋白 Marker (8-180kDa)
	RA10038	校准级彩色预染蛋白 Marker (10-250kDa)
	RA10039	校准级高分子彩色预染蛋白 Marker (25-400kDa)
TSA 多重荧光染色试剂盒	RA10008	TSA 双标三色多重荧光染色试剂盒 (mIHC)
	RA10009	TSA 三标四色多重荧光染色试剂盒 (mIHC)
	RA10010	TSA 四标五色多重荧光染色试剂盒 (mIHC)
	RA10011	TSA 五标六色多重荧光染色试剂盒 (mIHC)
	RA10012	TSA 六标七色多重荧光染色试剂盒 (mIHC)
IHC 检测试剂盒	RA10006	HRP Anti-Mouse/Rabbit IHC Detection System
	RA10007	Polymer-HRP Anti-Mouse/Rabbit IHC Detection System
抗体标记试剂盒	RE80004p	辣根过氧化物酶(HRP)抗体标记试剂盒
	RE80002q	Sulfo-NHS-生物素标记试剂盒
	RE80007p	Cy3 荧光素标记试剂盒
	RE80011p	Fluor488 荧光素标记试剂盒
	RE80017p	Fluor750 荧光素标记试剂盒
	RE80005p	藻红蛋白(R-PE) 抗体快速标记试剂盒
	RE80040	PE-Cy7 串联染料抗体快速标记试剂盒
稳转细胞系构建服务 (免费赠送全膜 WB 验证)	TS-0001	过表达稳转细胞系构建
	TS-0002	敲低稳转细胞系构建
	TS-0003	敲除细胞系构建

限于篇幅，更多产品详见官网：<https://www.enkilife.cn>