

产品名称: SNAI 1 (phospho Ser246) Rabbit Polyclonal Antibody
产品货号: APRab05454



产品概述 (Summary)

产品名称 (Production Name)	SNAI 1 (phospho Ser246) Rabbit Polyclonal Antibody
描述 (Description)	Rabbit polyclonal Antibody
宿主 (Host)	Rabbit
应用 (Application)	WB,IHC,ICC/IF,ELISA
种属反应性 (Reactivity)	Human,Mouse,Monkey

产品性能 (Performance)

偶联物 (Conjugation)	Unconjugated
修饰 (Modification)	Phosphorylated
同种型 (Isotype)	IgG
克隆 (Clonality)	Polyclonal
形式 (Form)	Liquid
存放说明 (Storage)	Store at 4°C short term. Aliquot and store at -20°C long term. Avoid freeze/thaw cycles.
储存溶液 (Buffer)	Liquid in PBS containing 50% glycerol, 0.5% protective protein and 0.02% New type preservative N.
纯化方式 (Purification)	Affinity purification

免疫原信息 (Immunogen)

基因名 (Gene Name)	SNAI1
别名 (Alternative Names)	SNAI1; SNAH; Zinc finger protein SNAI1; Protein snail homolog 1; Protein sna
基因 ID (Gene ID)	6615.0
蛋白 ID (SwissProt ID)	O95863.The antiserum was produced against synthesized peptide derived from human SNAI1 around the phosphorylation site of Ser246. AA range:215-264

产品应用 (Application)

稀释比 (Dilution Ratio)	WB 1:500-1:2000,IHC 1:100-1:300,ICC/IF 1:200-1:1000,ELISA 1:5000-1:10000
蛋白分子量 (Molecular Weight)	29kDa

产品名称: SNAI 1 (phospho Ser246) Rabbit Polyclonal Antibody
产品货号: APRab05454



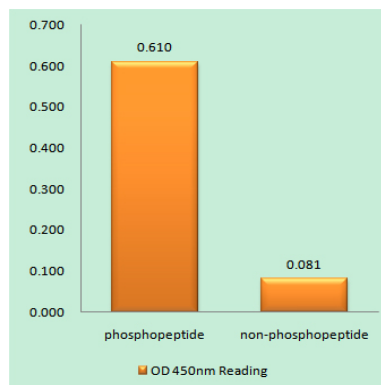
研究背景 (Background)

snail family transcriptional repressor 1(SNAI1) Homo sapiens The Drosophila embryonic protein snail is a zinc finger transcriptional repressor which downregulates the expression of ectodermal genes within the mesoderm. The nuclear protein encoded by this gene is structurally similar to the Drosophila snail protein, and is also thought to be critical for mesoderm formation in the developing embryo. At least two variants of a similar processed pseudogene have been found on chromosome 2. [provided by RefSeq, Jul 2008],function:Seems to be involved in embryonic mesoderm formation. Binds to 3 E-boxes of the E-cadherin gene promoter and represses its transcription.,similarity:Belongs to the snail C2H2-type zinc-finger protein family.,similarity:Contains 4 C2H2-type zinc fingers.,tissue specificity:Expressed in a variety of tissues with the highest expression in kidney.,

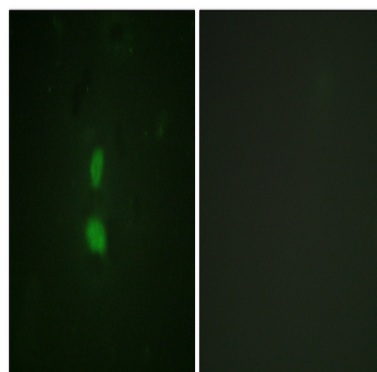
研究领域 (Research Area)

Adherens_Junction;

图片 (Image Data)

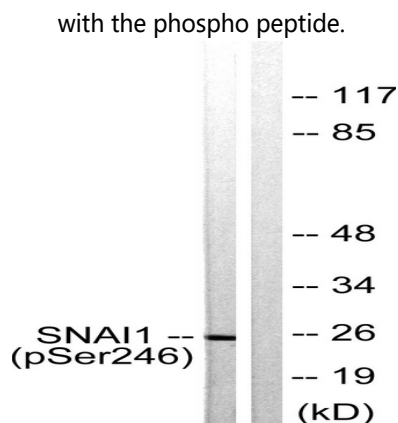


Enzyme-Linked Immunosorbent Assay (Phospho-ELISA) for Immunogen Phosphopeptide (Phospho-left) and Non-Phosphopeptide (Phospho-right) , using SNAI1 (Phospho-Ser246) Antibody



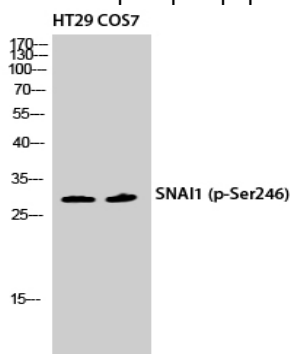
Immunofluorescence analysis of HUVEC cells, using SNAI1 (Phospho-Ser246) Antibody. The picture on the right is blocked

产品名称: SNAI 1 (phospho Ser246) Rabbit Polyclonal Antibody
产品货号: APRab05454



Western blot analysis of lysates from HT29 cells, using SNAI1 (Phospho-Ser246) Antibody. The lane on the right is blocked

with the phospho peptide.



Western Blot analysis of HT29 COS7 cells using Phospho-SNAI 1 (S246) Polyclonal Antibody diluted at 1: 500 cells nucleus extracted by Minute TM Cytoplasmic and Nuclear Fractionation kit (SC-003, Inventbiotech, MN, USA) .

注意事项 (Note)

For research use only .