

产品名称: Stat6 (phospho Tyr641) Rabbit Polyclonal Antibody

产品货号: APRab05490

产品概述 (Summary)

| | |
|-------------------|---|
| 描述(Description) | Rabbit polyclonal Antibody |
| 宿主(Host) | Rabbit |
| 应用(Application) | WB,IHC,ICC/IF,ELISA |
| 种属反应(Reactivity) | Human,Mouse,Rat |
| 偶联物(Conjugation) | Unconjugated |
| 修饰(Modification) | Phosphorylated |
| 同种型(Isotype) | IgG |
| 克隆(Clonality) | Polyclonal |
| 剂型(Form) | Liquid |
| 保存条件(Storage) | Store at 4°C short term. Aliquot and store at -20°C long term. Avoid freeze/thaw cycles. |
| 储存溶液(Buffer) | Liquid in PBS containing 50% glycerol, 0.5% protective protein and 0.02% New type preservative N. |
| 纯化 (Purification) | Affinity purification |

产品应用(Application)

| | |
|-----------------------|--|
| 稀释比(Dilution Ratio) | WB 1:500-1:2000,IHC 1:100-1:300,ICC/IF 1:50-1:200,ELISA 1:5000-1:20000 |
| 分子量(Molecular Weight) | 94kDa |

抗原信息(Antigen Information)

| | |
|-----------------------|---|
| 基因名(Gene Name) | STAT6 |
| 别名(Alternative Names) | STAT6; Signal transducer and activator of transcription 6; IL-4 Stat |
| 基因 ID(Gene ID) | 6778.0 |
| SwissProt ID | P42226 |
| 免疫原(Immunogen) | The antiserum was produced against synthesized peptide derived from human STAT6 around the phosphorylation site of Tyr641. AA range:608-657 |

研究背景 (Background)

The protein encoded by this gene is a member of the STAT family of transcription factors. In response to cytokines and growth factors, STAT family members are phosphorylated by the receptor associated kinases, and then form homo- or heterodimers

that translocate to the cell nucleus where they act as transcription activators. This protein plays a central role in exerting IL4 mediated biological responses. It is found to induce the expression of BCL2L1/BCL-X(L), which is responsible for the anti-apoptotic activity of IL4. Knockout studies in mice suggested the roles of this gene in differentiation of T helper 2 (Th2) cells, expression of cell surface markers, and class switch of immunoglobulins. Alternative splicing results in multiple transcript variants.[provided by RefSeq, May 2010],function:Carries out a dual function: signal transduction and activation of transcription. Involved in interleukin-4 signalling.,PTM:Tyrosine phosphorylated following stimulation by IL-4 and IL-3.,similarity:Belongs to the transcription factor STAT family.,similarity:Contains 1 SH2 domain.,subcellular location:Translocated into the nucleus in response to phosphorylation.,subunit:Forms a homodimer or a heterodimer with a related family member (By similarity). Interacts with NCOA1 via its C-terminal LXXLL motif.,

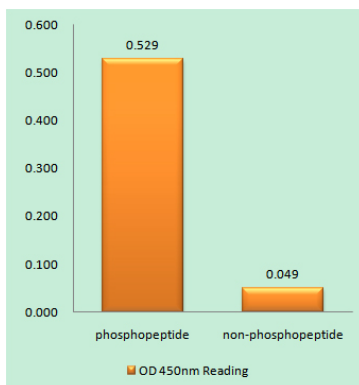
研究领域 (Research Area)

Jak_STAT;

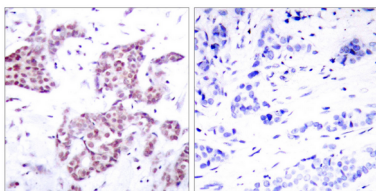
注意事项 (Note)

For research use only.

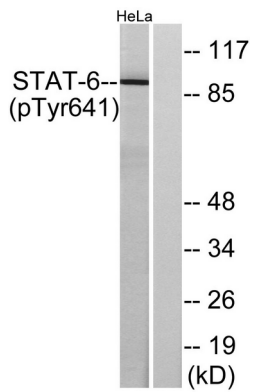
图片 (Image Data)



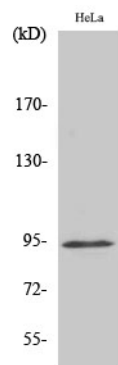
Enzyme-Linked Immunosorbent Assay (Phospho-ELISA) for Immunogen Phosphopeptide (Phospho-left) and Non-Phosphopeptide (Phospho-right) , using STAT6 (Phospho-Tyr641) Antibody



Immunohistochemistry analysis of paraffin-embedded human breast carcinoma, using STAT6 (Phospho-Tyr641) Antibody. The picture on the right is blocked with the phospho peptide.



Western blot analysis of lysates from HeLa cells treated with IL-4, using STAT6 (Phospho-Tyr641) Antibody. The lane on the right is blocked with the phospho peptide.



Western Blot analysis of various cells using Phospho-Stat6 (Y641) Polyclonal Antibody

EnkiLife 优势产品推荐

| 产品类别 | 产品货号 | 产品名称 |
|-----------------------------|----------|--|
| WB 解决方案 | RA10020 | 2h 极速 WB 即用型全流程试剂盒 |
| | RA10021 | 4h 快速 WB 即用型全流程试剂盒 |
| | RA10042 | 5h 畅享版 WB 全流程试剂盒 |
| | RA10037 | 校准级彩色预染蛋白 Marker (8-180kDa) |
| | RA10038 | 校准级彩色预染蛋白 Marker (10-250kDa) |
| | RA10039 | 校准级高分子彩色预染蛋白 Marker (25-400kDa) |
| TSA 多重荧光染色试剂盒 | RA10008 | TSA 双标三色多重荧光染色试剂盒 (mIHC) |
| | RA10009 | TSA 三标四色多重荧光染色试剂盒 (mIHC) |
| | RA10010 | TSA 四标五色多重荧光染色试剂盒 (mIHC) |
| | RA10011 | TSA 五标六色多重荧光染色试剂盒 (mIHC) |
| | RA10012 | TSA 六标七色多重荧光染色试剂盒 (mIHC) |
| IHC 检测试剂盒 | RA10006 | HRP Anti-Mouse/Rabbit IHC Detection System |
| | RA10007 | Polymer-HRP Anti-Mouse/Rabbit IHC Detection System |
| 抗体标记试剂盒 | RE80004p | 辣根过氧化物酶(HRP)抗体标记试剂盒 |
| | RE80002q | Sulfo-NHS-生物素标记试剂盒 |
| | RE80007p | Cy3 荧光素标记试剂盒 |
| | RE80011p | Fluor488 荧光素标记试剂盒 |
| | RE80017p | Fluor750 荧光素标记试剂盒 |
| | RE80005p | 藻红蛋白(R-PE) 抗体快速标记试剂盒 |
| | RE80040 | PE-Cy7 串联染料抗体快速标记试剂盒 |
| 稳转细胞系构建服务 (免费赠送全膜 WB 验证) | TS-0001 | 过表达稳转细胞系构建 |
| | TS-0002 | 敲低稳转细胞系构建 |
| | TS-0003 | 敲除细胞系构建 |

限于篇幅，更多产品详见官网：<https://www.enkilife.cn>