

产品名称: ARPP-21 Rabbit Polyclonal Antibody  
产品货号: APRab07164



## 产品概述 (Summary)

产品名称 (Production Name)	ARPP-21 Rabbit Polyclonal Antibody
描述 (Description)	Rabbit polyclonal Antibody
宿主 (Host)	Rabbit
应用 (Application)	WB,IHC,ICC/IF,ELISA
种属反应性 (Reactivity)	Human,Mouse

## 产品性能 (Performance)

偶联物 (Conjugation)	Unconjugated
修饰 (Modification)	Unmodified
同种型 (Isotype)	IgG
克隆 (Clonality)	Polyclonal
形式 (Form)	Liquid
存放说明 (Storage)	Store at 4°C short term. Aliquot and store at -20°C long term. Avoid freeze/thaw cycles.
储存溶液 (Buffer)	Liquid in PBS containing 50% glycerol, 0.5% protective protein and 0.02% New type preservative N.
纯化方式 (Purification)	Affinity purification

## 免疫原信息 (Immunogen)

基因名 (Gene Name)	ARPP21
别名 (Alternative Names)	ARPP21; TARPP; cAMP-regulated phosphoprotein 21; ARPP-21; Thymocyte cAMP-regulated phosphoprotein
基因 ID (Gene ID)	10777.0
蛋白 ID (SwissProt ID)	Q9UBL0.The antiserum was produced against synthesized peptide derived from human ARPP21. AA range:211-260

## 产品应用 (Application)

稀释比 (Dilution Ratio)	WB 1:500-1:2000,IHC 1:100-1:300,ICC/IF 1:50-1:200,ELISA 1:5000-1:10000
蛋白分子量 (Molecular Weight)	80kDa

产品名称: ARPP-21 Rabbit Polyclonal Antibody  
产品货号: APRab07164

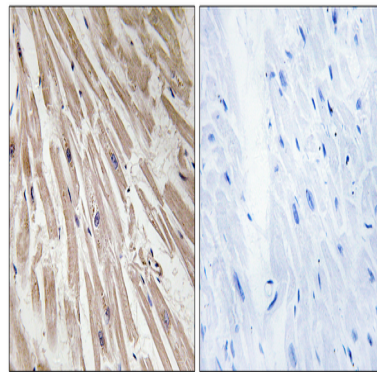


## 研究背景 (Background)

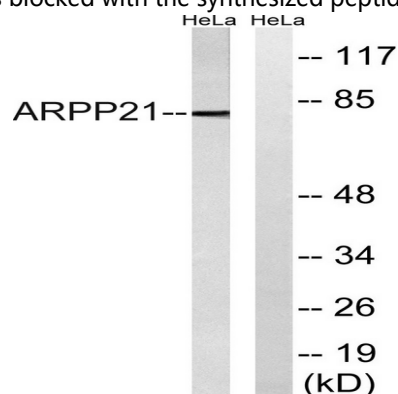
This gene encodes a cAMP-regulated phosphoprotein. The encoded protein is enriched in the caudate nucleus and cerebellar cortex. A similar protein in mouse may be involved in regulating the effects of dopamine in the basal ganglia. Alternate splicing results in multiple transcript variants. [provided by RefSeq, Jun 2012],function:Isoform 2 may act as a competitive inhibitor of calmodulin-dependent enzymes such as calcineurin in neurons.,PTM:Isoform 1 is methylated by CARM1 in immature thymocytes.,PTM:Phosphorylation at Ser-56 favors interaction with CALM1.,similarity:Contains 1 R3H domain.,subunit:Interacts with CALM1.,tissue specificity:Isoform 2 is expressed in brain. Isoform 1 is present in immature thymocytes (at protein level),.

## 研究领域 (Research Area)

## 图片 (Image Data)

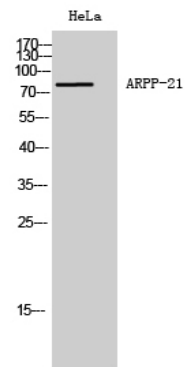


Immunohistochemistry analysis of paraffin-embedded human heart tissue, using ARPP21 Antibody. The picture on the right is blocked with the synthesized peptide.



Western blot analysis of lysates from HeLa cells, using ARPP21 Antibody. The lane on the right is blocked with the synthesized peptide.

产品名称: ARPP-21 Rabbit Polyclonal Antibody  
产品货号: APRab07164



Western Blot analysis of HeLa cells using ARPP-21 Polyclonal Antibody diluted at 1: 1000

### 注意事项 (Note)

For research use only .