

产品名称: ATP7B Rabbit Polyclonal Antibody

产品货号: APRab07345

产品概述 (Summary)

| | |
|-------------------|---|
| 描述(Description) | Rabbit polyclonal Antibody |
| 宿主(Host) | Rabbit |
| 应用(Application) | IHC, ICC/IF, ELISA |
| 种属反应(Reactivity) | Human, Mouse, Rat |
| 偶联物(Conjugation) | Unconjugated |
| 修饰(Modification) | Unmodified |
| 同种型(Isotype) | IgG |
| 克隆(Clonality) | Polyclonal |
| 剂型(Form) | Liquid |
| 保存条件(Storage) | Store at 4°C short term. Aliquot and store at -20°C long term. Avoid freeze/thaw cycles. |
| 储存溶液(Buffer) | Liquid in PBS containing 50% glycerol, 0.5% protective protein and 0.02% New type preservative N. |
| 纯化 (Purification) | Affinity purification |

产品应用(Application)

稀释比(Dilution Ratio) IHC 1:100-1:300, ICC/IF 1:200-1:1000, ELISA 1:5000-1:10000

分子量(Molecular Weight)

抗原信息(Antigen Information)

| | |
|-----------------------|--|
| 基因名(Gene Name) | ATP7B |
| 别名(Alternative Names) | ATP7B; PWD; WC1; WND; Copper-transporting ATPase 2; Copper pump 2; Wilson disease-associated protein |
| 基因 ID(Gene ID) | 540.0 |
| SwissProt ID | P35670 |
| 免疫原(Immunogen) | The antiserum was produced against synthesized peptide derived from human ATP7B. AA range:161-210 |

研究背景 (Background)

This gene is a member of the P-type cation transport ATPase family and encodes a protein with several membrane-spanning

domains, an ATPase consensus sequence, a hinge domain, a phosphorylation site, and at least 2 putative copper-binding sites. This protein functions as a monomer, exporting copper out of the cells, such as the efflux of hepatic copper into the bile. Alternate transcriptional splice variants, encoding different isoforms with distinct cellular localizations, have been characterized. Mutations in this gene have been associated with Wilson disease (WD). [provided by RefSeq, Jul 2008], catalytic activity: $\text{ATP} + \text{H}_2\text{O} + \text{Cu}^{2+}(\text{In}) = \text{ADP} + \text{phosphate} + \text{Cu}^{2+}(\text{Out})$, disease: Defects in ATP7B are the cause of Wilson disease (WD) [MIM:277900]. WD is an autosomal recessive disorder of copper metabolism in which copper cannot be incorporated into ceruloplasmin in liver, and cannot be excreted from the liver into the bile. Copper accumulates in the liver and subsequently in the brain and kidney. The disease is characterized by neurologic manifestations and signs of cirrhosis, function: Involved in the export of copper out of the cells, such as the efflux of hepatic copper into the bile, online information: Wilson's disease website, PTM: Isoform 1 may be proteolytically cleaved at the N-terminus to produce the WND/140 kDa form, similarity: Belongs to the cation transport ATPase (P-type) family, similarity: Belongs to the cation transport ATPase (P-type) family. Type IB subfamily, similarity: Contains 6 HMA domains, subcellular location: Predominantly found in the trans-Golgi network (TGN). Not redistributed to the plasma membrane in response to elevated copper levels, subunit: Monomer. Interacts with COMMD1/MURR1, tissue specificity: Most abundant in liver and kidney and also found in brain. Isoform 2 is expressed in brain but not in liver. The cleaved form WND/140 kDa is found in liver cell lines and other tissues,

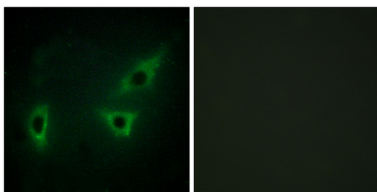
研究领域 (Research Area)

Signal Transduction; Metabolism; Vitamins / Minerals

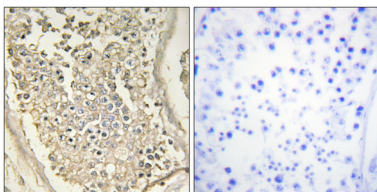
注意事项 (Note)

For research use only.

图片 (Image Data)



Immunofluorescence analysis of HeLa cells, using ATP7B Antibody. The picture on the right is blocked with the synthesized peptide.



Immunohistochemistry analysis of paraffin-embedded human testis tissue, using ATP7B Antibody. The picture on the right is blocked with the synthesized peptide.

EnkiLife 优势产品推荐

| 产品类别 | 产品货号 | 产品名称 |
|-----------------------------|----------|--|
| WB 解决方案 | RA10020 | 2h 极速 WB 即用型全流程试剂盒 |
| | RA10021 | 4h 快速 WB 即用型全流程试剂盒 |
| | RA10042 | 5h 畅享版 WB 全流程试剂盒 |
| | RA10037 | 校准级彩色预染蛋白 Marker (8-180kDa) |
| | RA10038 | 校准级彩色预染蛋白 Marker (10-250kDa) |
| | RA10039 | 校准级高分子彩色预染蛋白 Marker (25-400kDa) |
| TSA 多重荧光染色试剂盒 | RA10008 | TSA 双标三色多重荧光染色试剂盒 (mIHC) |
| | RA10009 | TSA 三标四色多重荧光染色试剂盒 (mIHC) |
| | RA10010 | TSA 四标五色多重荧光染色试剂盒 (mIHC) |
| | RA10011 | TSA 五标六色多重荧光染色试剂盒 (mIHC) |
| | RA10012 | TSA 六标七色多重荧光染色试剂盒 (mIHC) |
| IHC 检测试剂盒 | RA10006 | HRP Anti-Mouse/Rabbit IHC Detection System |
| | RA10007 | Polymer-HRP Anti-Mouse/Rabbit IHC Detection System |
| 抗体标记试剂盒 | RE80004p | 辣根过氧化物酶(HRP)抗体标记试剂盒 |
| | RE80002q | Sulfo-NHS-生物素标记试剂盒 |
| | RE80007p | Cy3 荧光素标记试剂盒 |
| | RE80011p | Fluor488 荧光素标记试剂盒 |
| | RE80017p | Fluor750 荧光素标记试剂盒 |
| | RE80005p | 藻红蛋白(R-PE) 抗体快速标记试剂盒 |
| | RE80040 | PE-Cy7 串联染料抗体快速标记试剂盒 |
| 稳转细胞系构建服务 (免费赠送全膜 WB 验证) | TS-0001 | 过表达稳转细胞系构建 |
| | TS-0002 | 敲低稳转细胞系构建 |
| | TS-0003 | 敲除细胞系构建 |

限于篇幅，更多产品详见官网：<https://www.enkilife.cn>