

产品名称: CD225 Rabbit Polyclonal Antibody
产品货号: APRab08288



产品概述 (Summary)

产品名称 (Production Name)	CD225 Rabbit Polyclonal Antibody
描述 (Description)	Rabbit polyclonal Antibody
宿主 (Host)	Rabbit
应用 (Application)	WB,IHC,ICC/IF,ELISA
种属反应性 (Reactivity)	Human,Rat,Mouse

产品性能 (Performance)

偶联物 (Conjugation)	Unconjugated
修饰 (Modification)	Unmodified
同种型 (Isotype)	IgG
克隆 (Clonality)	Polyclonal
形式 (Form)	Liquid
存放说明 (Storage)	Store at 4°C short term. Aliquot and store at -20°C long term. Avoid freeze/thaw cycles.
储存溶液 (Buffer)	Liquid in PBS containing 50% glycerol, 0.5% protective protein and 0.02% New type preservative N.
纯化方式 (Purification)	Affinity purification

免疫原信息 (Immunogen)

基因名 (Gene Name)	IFITM1 IFITM1; CD225; IFI17; Interferon-induced transmembrane protein 1; Dispanin
别名 (Alternative Names)	subfamily A member 2a; DSPA2a; Interferon-induced protein 17; Interferon-inducible protein 9-27; Leu-13 antigen; CD225
基因 ID (Gene ID)	8519.0
蛋白 ID (SwissProt ID)	P13164.The antiserum was produced against synthesized peptide derived from the N-terminal region of human IFITM1. AA range:1-50

产品应用 (Application)

稀释比 (Dilution Ratio)	WB 1:500-1:2000,IHC 1:100-1:300,ICC/IF 1:50-1:200,ELISA 1:10000-1:20000
蛋白分子量 (Molecular Weight)	15kDa

产品名称: CD225 Rabbit Polyclonal Antibody
产品货号: APRab08288



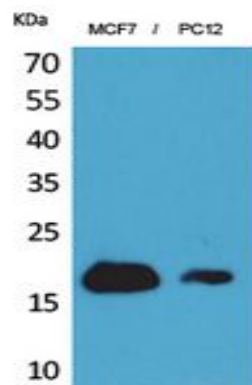
研究背景 (Background)

function: Implicated in the control of cell growth. Component of a multimeric complex involved in the transduction of antiproliferative and homotypic adhesion signals., induction: By alpha and gamma interferons., similarity: Belongs to the CD225 family., function: Implicated in the control of cell growth. Component of a multimeric complex involved in the transduction of antiproliferative and homotypic adhesion signals., induction: By alpha and gamma interferons., similarity: Belongs to the CD225 family.,

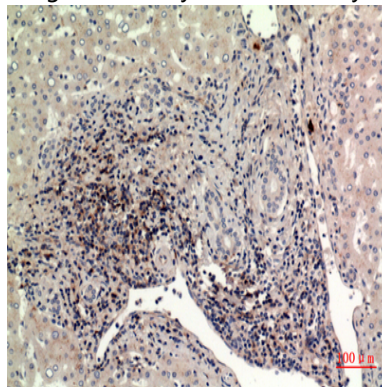
研究领域 (Research Area)

B_Cell_Antigen;

图片 (Image Data)

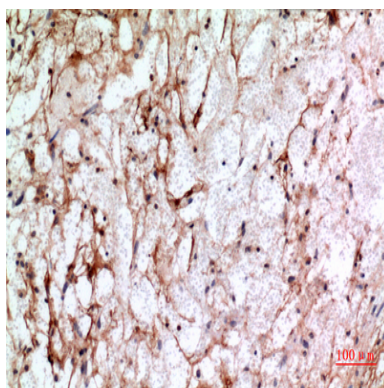


Western Blot analysis of MCF7, PC12 cells using CD225 Polyclonal Antibody.. Secondary antibody was diluted at 1:20000

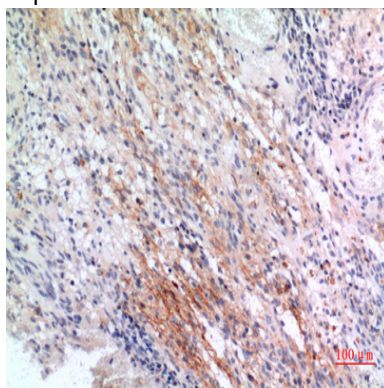


Immunohistochemical analysis of paraffin-embedded human-liver, antibody was diluted at 1:100

产品名称: CD225 Rabbit Polyclonal Antibody
产品货号: APRab08288



Immunohistochemical analysis of paraffin-embedded human-brain, antibody was diluted at 1:100



Immunohistochemical analysis of paraffin-embedded human-brain, antibody was diluted at 1:100

注意事项 (Note)

For research use only .