

产品名称: CHP Rabbit Polyclonal Antibody

产品货号: APRab08778

产品概述 (Summary)

描述(Description)	Rabbit polyclonal Antibody
宿主(Host)	Rabbit
应用(Application)	WB,ELISA
种属反应(Reactivity)	Human,Mouse,Rat
偶联物(Conjugation)	Unconjugated
修饰(Modification)	Unmodified
同种型(Isotype)	IgG
克隆(Clonality)	Polyclonal
剂型(Form)	Liquid
保存条件(Storage)	Store at 4°C short term. Aliquot and store at -20°C long term. Avoid freeze/thaw cycles.
储存溶液(Buffer)	Liquid in PBS containing 50% glycerol, 0.5% protective protein and 0.02% New type preservative N.
纯化 (Purification)	Affinity purification

产品应用(Application)

稀释比(Dilution Ratio)	WB 1:500-1:2000,ELISA 1:10000-1:20000
分子量(Molecular Weight)	24kDa

抗原信息(Antigen Information)

基因名(Gene Name)	CHP1
别名(Alternative Names)	CHP1; CHP; Calcineurin B homologous protein 1; Calcineurin B-like protein; Calcium-binding protein CHP; Calcium-binding protein p22; EF-hand calcium-binding domain-containing protein p22
基因 ID(Gene ID)	11261.0
SwissProt ID	Q99653
免疫原(Immunogen)	Synthesized peptide derived from the Internal region of human CHP.

研究背景 (Background)

This gene encodes a phosphoprotein that binds to the Na⁺/H⁺ exchanger NHE1. This protein serves as an essential cofactor

which supports the physiological activity of NHE family members and may play a role in the mitogenic regulation of NHE1. The protein shares similarity with calcineurin B and calmodulin and it is also known to be an endogenous inhibitor of calcineurin activity. [provided by RefSeq, Jul 2008],function:Required for constitutive membrane traffic. Inhibits GTPase-stimulated Na(+)/H(+) exchange. Also inhibits calcineurin phosphatase activity. Required for activity of SLC9A1/NHE1.,PTM:Both N-myristoylation and calcium-mediated conformational changes are essential for its function in exocytic traffic.,PTM:Phosphorylated; decreased phosphorylation is associated with an increase in exchange activity. The phosphorylation state may regulate the binding to NHE1.,similarity:Contains 4 EF-hand domains.,subunit:Monomer (By similarity). Specifically binds to SLC9A1/NHE1 at a domain that is critical for growth factor stimulation of exchange activity.,tissue specificity:Ubiquitously expressed. Has been found in fetal eye, lung, liver, muscle, heart, kidney, thymus and spleen.,

研究领域 (Research Area)

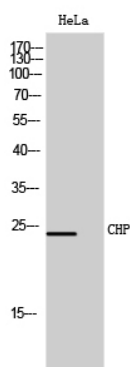
MAPK_ERK_Growth;MAPK_G_Protein;Calcium;Oocyte

meiosis;Apoptosis_Inhibition;Apoptosis_Mitochondrial;Apoptosis_Overview;WNT;WNT-T CELLAxon guidance;VEGF;Natural killer cell mediated cytotoxicity;T_Cell_Receptor;B_Cell_Antigen;Long-term potentiation;Alzheimer's disease;Amyotrophic lateral sclerosis (ALS);

注意事项 (Note)

For research use only.

图片 (Image Data)



Western Blot analysis of HeLa cells using CHP Polyclonal Antibody

EnkiLife 优势产品推荐

产品类别	产品货号	产品名称
WB 解决方案	RA10020	2h 极速 WB 即用型全流程试剂盒
	RA10021	4h 快速 WB 即用型全流程试剂盒
	RA10042	5h 畅享版 WB 全流程试剂盒
	RA10037	校准级彩色预染蛋白 Marker (8-180kDa)
	RA10038	校准级彩色预染蛋白 Marker (10-250kDa)
	RA10039	校准级高分子彩色预染蛋白 Marker (25-400kDa)
TSA 多重荧光染色试剂盒	RA10008	TSA 双标三色多重荧光染色试剂盒 (mIHC)
	RA10009	TSA 三标四色多重荧光染色试剂盒 (mIHC)
	RA10010	TSA 四标五色多重荧光染色试剂盒 (mIHC)
	RA10011	TSA 五标六色多重荧光染色试剂盒 (mIHC)
	RA10012	TSA 六标七色多重荧光染色试剂盒 (mIHC)
IHC 检测试剂盒	RA10006	HRP Anti-Mouse/Rabbit IHC Detection System
	RA10007	Polymer-HRP Anti-Mouse/Rabbit IHC Detection System
抗体标记试剂盒	RE80004p	辣根过氧化物酶(HRP)抗体标记试剂盒
	RE80002q	Sulfo-NHS-生物素标记试剂盒
	RE80007p	Cy3 荧光素标记试剂盒
	RE80011p	Fluor488 荧光素标记试剂盒
	RE80017p	Fluor750 荧光素标记试剂盒
	RE80005p	藻红蛋白(R-PE) 抗体快速标记试剂盒
	RE80040	PE-Cy7 串联染料抗体快速标记试剂盒
稳转细胞系构建服务 (免费赠送全膜 WB 验证)	TS-0001	过表达稳转细胞系构建
	TS-0002	敲低稳转细胞系构建
	TS-0003	敲除细胞系构建

限于篇幅，更多产品详见官网：<https://www.enkilife.cn>