

**产品名称:** Cleaved-Plasma Kallikrein HC (R390) Rabbit Polyclonal Antibody  
**产品货号:** APRab09027

## 产品概述 (Summary)

|                   |   |
|-------------------|---|
| 描述(Description)   | Rabbit polyclonal Antibody  |
| 宿主(Host)          | Rabbit  |
| 应用(Application)   | WB,IHC,ICC/IF,ELISA   |
| 种属反应(Reactivity)  | Human,Rat,Mouse   |
| 偶联物(Conjugation)  | Unconjugated  |
| 修饰(Modification)  | Unmodified  |
| 同种型(Isotype)      | IgG   |
| 克隆(Clonality)     | Polyclonal  |
| 剂型(Form)          | Liquid  |
| 保存条件(Storage)     | Store at 4°C short term. Aliquot and store at -20°C long term. Avoid freeze/thaw cycles.          |
| 储存溶液(Buffer)      | Liquid in PBS containing 50% glycerol, 0.5% protective protein and 0.02% New type preservative N. |
| 纯化 (Purification) | Affinity purification   |

## 产品应用(Application)

|                       |  |
|-----------------------|--|
| 稀释比(Dilution Ratio)   | WB 1:500-1:2000,IHC 1:100-1:300,ICC/IF 1:50-1:200,ELISA 1:5000-1:20000 |
| 分子量(Molecular Weight) | 45kDa  |

## 抗原信息(Antigen Information)

|                       |   |
|-----------------------|---|
| 基因名(Gene Name)        | KLKB1   |
| 别名(Alternative Names) | KLKB1; KLK3; Plasma kallikrein; Fletcher factor; Kininogenin; Plasma prekallikrein                |
| 基因 ID(Gene ID)        | 3818.0  |
| SwissProt ID          | P03952  |
| 免疫原(Immunogen)        | The antiserum was produced against synthesized peptide derived from human KLKB1. AA range:341-390 |

## 研究背景 (Background)

This gene encodes a glycoprotein that participates in the surface-dependent activation of blood coagulation, fibrinolysis, kinin generation and inflammation. The encoded preproprotein present in plasma as a non-covalent complex with high molecular

weight kininogen undergoes proteolytic processing mediated by activated coagulation factor XII to generate a disulfide-linked, heterodimeric serine protease comprised of heavy and light chains. Certain mutations in this gene cause prekallikrein deficiency. Alternative splicing results in multiple transcript variants encoding different isoforms. [provided by RefSeq, Jan 2016],catalytic activity:Cleaves selectively Arg-|-Xaa and Lys-|-Xaa bonds, including Lys-|-Arg and Arg-|-Ser bonds in (human) kininogen to release bradykinin.,disease:Defects in KLKB1 are the cause of prekallikrein deficiency (PKK deficiency) [MIM:612423]; also called Fletcher factor deficiency. This disorder is a blood coagulation defect.,function:The enzyme cleaves Lys-Arg and Arg-Ser bonds. It activates, in a reciprocal reaction, factor XII after its binding to a negatively charged surface. It also releases bradykinin from HMW kininogen and may also play a role in the renin-angiotensin system by converting prorenin into renin.,similarity:Belongs to the peptidase S1 family.,similarity:Belongs to the peptidase S1 family. Plasma kallikrein subfamily.,similarity:Contains 1 peptidase S1 domain.,similarity:Contains 4 apple domains.,subunit:The zymogen is activated by factor XIIa, which cleaves the molecule into a light chain, which contains the active site, and a heavy chain, which associates with HMW kininogen. These chains are linked by one or more disulfide bonds.,

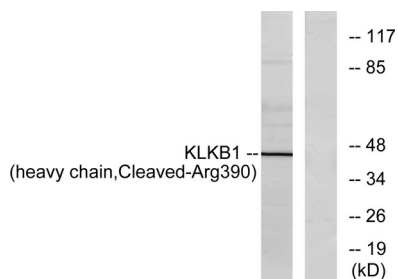
## 研究领域 (Research Area)

Complement and coagulation cascades;

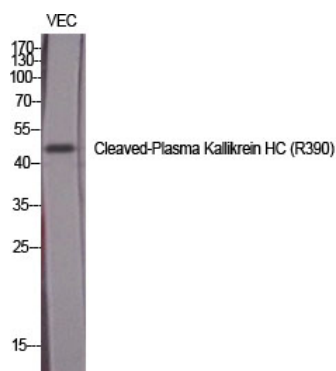
## 注意事项 (Note)

For research use only.

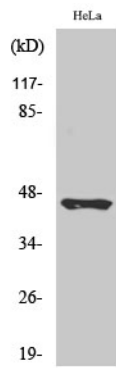
## 图片 (Image Data)



Western blot analysis of lysates from HeLa cells, using KLKB1 (heavy chain, Cleaved-Arg390) Antibody. The lane on the right is blocked with the synthesized peptide.



Western Blot analysis of various cells using Cleaved-Plasma Kallikrein HC (R390) Polyclonal Antibody diluted at 1: 1000



Western Blot analysis of HeLa cells using Cleaved-Plasma Kallikrein HC (R390)  
Polyclonal Antibody diluted at 1: 1000

## EnkiLife 优势产品推荐

| 产品类别                        | 产品货号     | 产品名称   |
|-----------------------------|----------|--|
| WB 解决方案                     | RA10020  | 2h 极速 WB 即用型全流程试剂盒                                 |
|                             | RA10021  | 4h 快速 WB 即用型全流程试剂盒                                 |
|                             | RA10042  | 5h 畅享版 WB 全流程试剂盒                                   |
|                             | RA10037  | 校准级彩色预染蛋白 Marker (8-180kDa)                        |
|                             | RA10038  | 校准级彩色预染蛋白 Marker (10-250kDa)                       |
|                             | RA10039  | 校准级高分子彩色预染蛋白 Marker (25-400kDa)                    |
| TSA 多重荧光染色试剂盒               | RA10008  | TSA 双标三色多重荧光染色试剂盒 (mIHC)                           |
|                             | RA10009  | TSA 三标四色多重荧光染色试剂盒 (mIHC)                           |
|                             | RA10010  | TSA 四标五色多重荧光染色试剂盒 (mIHC)                           |
|                             | RA10011  | TSA 五标六色多重荧光染色试剂盒 (mIHC)                           |
|                             | RA10012  | TSA 六标七色多重荧光染色试剂盒 (mIHC)                           |
| IHC 检测试剂盒                   | RA10006  | HRP Anti-Mouse/Rabbit IHC Detection System         |
|                             | RA10007  | Polymer-HRP Anti-Mouse/Rabbit IHC Detection System |
| 抗体标记试剂盒                     | RE80004p | 辣根过氧化物酶(HRP)抗体标记试剂盒                                |
|                             | RE80002q | Sulfo-NHS-生物素标记试剂盒                                 |
|                             | RE80007p | Cy3 荧光素标记试剂盒                                       |
|                             | RE80011p | Fluor488 荧光素标记试剂盒                                  |
|                             | RE80017p | Fluor750 荧光素标记试剂盒                                  |
|                             | RE80005p | 藻红蛋白(R-PE) 抗体快速标记试剂盒                               |
|                             | RE80040  | PE-Cy7 串联染料抗体快速标记试剂盒                               |
| 稳转细胞系构建服务<br>(免费赠送全膜 WB 验证) | TS-0001  | 过表达稳转细胞系构建   |
|                             | TS-0002  | 敲低稳转细胞系构建  |
|                             | TS-0003  | 敲除细胞系构建  |

限于篇幅，更多产品详见官网：<https://www.enkilife.cn>