

产品名称: CRF-RI Rabbit Polyclonal Antibody
产品货号: APRab09391



产品概述 (Summary)

产品名称 (Production Name)	CRF-RI Rabbit Polyclonal Antibody
描述 (Description)	Rabbit polyclonal Antibody
宿主 (Host)	Rabbit
应用 (Application)	WB,IHC,ICC/IF,ELISA
种属反应性 (Reactivity)	Human,Mouse,Rat

产品性能 (Performance)

偶联物 (Conjugation)	Unconjugated
修饰 (Modification)	Unmodified
同种型 (Isotype)	IgG
克隆 (Clonality)	Polyclonal
形式 (Form)	Liquid
存放说明 (Storage)	Store at 4°C short term. Aliquot and store at -20°C long term. Avoid freeze/thaw cycles.
储存溶液 (Buffer)	Liquid in PBS containing 50% glycerol, 0.5% protective protein and 0.02% New type preservative N.
纯化方式 (Purification)	Affinity purification

免疫原信息 (Immunogen)

基因名 (Gene Name)	CRHR1 CRHR1; CRFR; CRFR1; CRHR; Corticotropin-releasing factor receptor 1; CRF-R-1; CRF-R1; CRFR-1; Corticotropin-releasing hormone receptor 1; CRH-R-1; CRH-R1
别名 (Alternative Names)	
基因 ID (Gene ID)	1394.0
蛋白 ID (SwissProt ID)	P34998.The antiserum was produced against synthesized peptide derived from the Internal region of human CRHR1. AA range:71-120

产品应用 (Application)

稀释比 (Dilution Ratio)	WB 1:500-1:2000,IHC 1:100-1:300,ICC/IF 1:200-1:1000,ELISA 1:5000-1:10000
蛋白分子量 (Molecular Weight)	50kDa

产品名称: CRF-RI Rabbit Polyclonal Antibody
产品货号: APRab09391



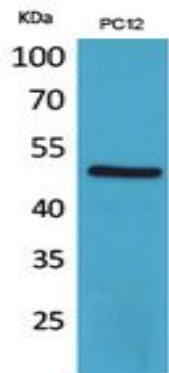
研究背景 (Background)

This gene encodes a G-protein coupled receptor that binds neuropeptides of the corticotropin releasing hormone family that are major regulators of the hypothalamic-pituitary-adrenal pathway. The encoded protein is essential for the activation of signal transduction pathways that regulate diverse physiological processes including stress, reproduction, immune response and obesity. Alternative splicing results in multiple transcript variants. Naturally-occurring readthrough transcription between this gene and upstream GenID:147081 results in transcripts that encode isoforms that share similarity with the products of this gene. [provided by RefSeq, Aug 2016],function:This is a receptor for corticotropin releasing factor. Shows high-affinity CRF binding. The activity of this receptor is mediated by G proteins which activate adenylyl cyclase.,PTM:C-terminal Ser or Thr residues may be phosphorylated.,similarity:Belongs to the G-protein coupled receptor 2 family.,tissue specificity:Predominantly expressed in the cerebellum, pituitary, cerebral cortex and olfactory lobe.,

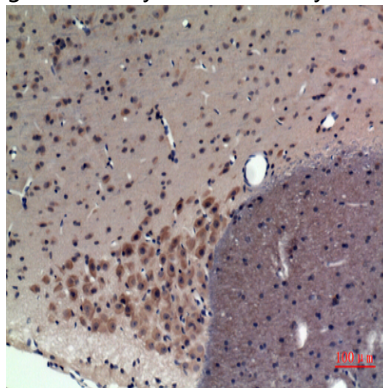
研究领域 (Research Area)

Neuroactive ligand-receptor interaction;Long-term depression;

图片 (Image Data)

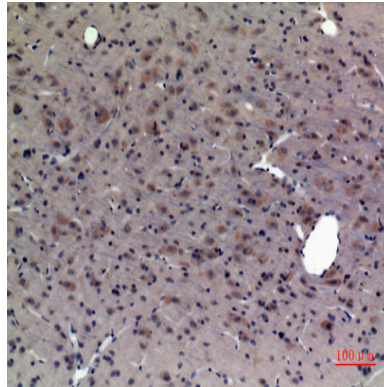


Western Blot analysis of PC12 cells using CRF-RI Polyclonal Antibody.. Secondary antibody was diluted at 1:20000

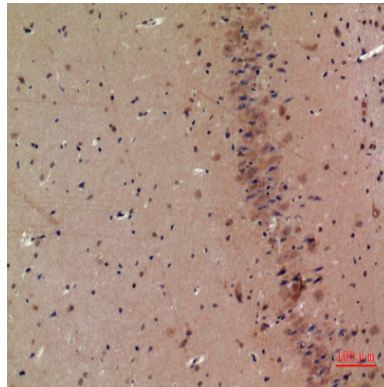


Immunohistochemical analysis of paraffin-embedded rat-brain, antibody was diluted at 1:100

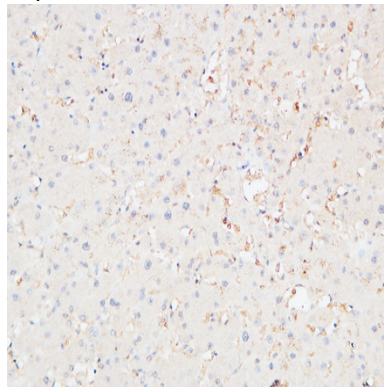
产品名称: CRF-RI Rabbit Polyclonal Antibody
产品货号: APRab09391



Immunohistochemical analysis of paraffin-embedded rat-brain, antibody was diluted at 1:100

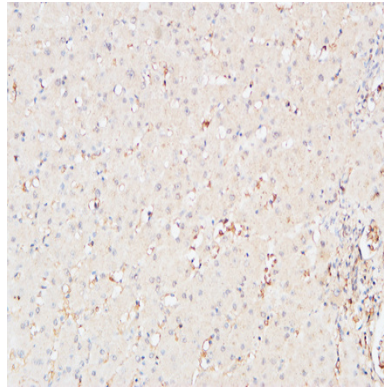


Immunohistochemical analysis of paraffin-embedded mouse-brain, antibody was diluted at 1:100

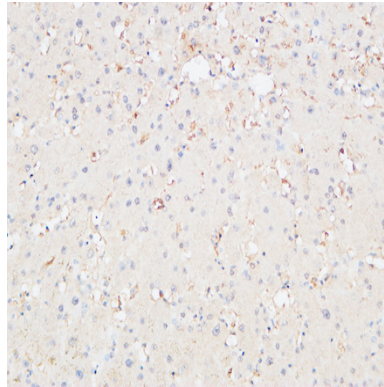


Immunohistochemical analysis of paraffin-embedded Human Liver. 1, Antibody was diluted at 1:100 (4°,overnight) . 2, High-pressure and temperature EDTA, pH8.0 was used for antigen retrieval. 3,Secondary antibody was diluted at 1:200 (room temperature, 30min) .

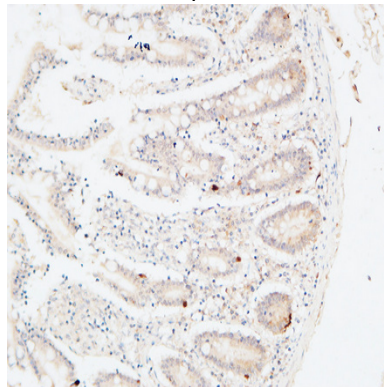
产品名称: CRF-RI Rabbit Polyclonal Antibody
产品货号: APRab09391



Immunohistochemical analysis of paraffin-embedded Human Liver. 1, Antibody was diluted at 1:100 (4°,overnight) . 2, High-pressure and temperature EDTA, pH8.0 was used for antigen retrieval. 3,Secondary antibody was diluted at 1:200 (room temperature, 30min) .

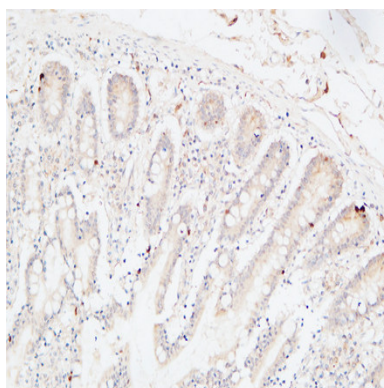


Immunohistochemical analysis of paraffin-embedded Human Liver. 1, Antibody was diluted at 1:100 (4°,overnight) . 2, High-pressure and temperature EDTA, pH8.0 was used for antigen retrieval. 3,Secondary antibody was diluted at 1:200 (room temperature, 30min) .



Immunohistochemical analysis of paraffin-embedded Human colon. 1, Antibody was diluted at 1:100 (4°,overnight) . 2, High-pressure and temperature EDTA, pH8.0 was used for antigen retrieval. 3,Secondary antibody was diluted at 1:200 (room temperature, 30min) .

产品名称: CRF-RI Rabbit Polyclonal Antibody
产品货号: APRab09391



Immunohistochemical analysis of paraffin-embedded Human colon. 1, Antibody was diluted at 1:100 (4°,overnight) . 2, High-pressure and temperature EDTA, pH8.0 was used for antigen retrieval. 3,Secondary antibody was diluted at 1:200 (room temperature, 30min) .

注意事项 (Note)

For research use only .