

产品名称: Frizzled-7 Rabbit Polyclonal Antibody

产品货号: APRab11148

产品概述 (Summary)

| | |
|-------------------|---|
| 描述(Description) | Rabbit polyclonal Antibody |
| 宿主(Host) | Rabbit |
| 应用(Application) | WB, ICC/IF, ELISA, FC |
| 种属反应(Reactivity) | Human, Mouse |
| 偶联物(Conjugation) | Unconjugated |
| 修饰(Modification) | Unmodified |
| 同种型(Isotype) | IgG |
| 克隆(Clonality) | Polyclonal |
| 剂型(Form) | Liquid |
| 保存条件(Storage) | Store at 4°C short term. Aliquot and store at -20°C long term. Avoid freeze/thaw cycles. |
| 储存溶液(Buffer) | Liquid in PBS containing 50% glycerol, 0.5% protective protein and 0.02% New type preservative N. |
| 纯化 (Purification) | Affinity purification |

产品应用(Application)

| | |
|-----------------------|--|
| 稀释比(Dilution Ratio) | WB 1:500-1:2000, ICC/IF 1:100-1:500, ELISA 1:5000-1:20000, FC 1:50-1:200 |
| 分子量(Molecular Weight) | 64kDa |

抗原信息(Antigen Information)

| | |
|-----------------------|--|
| 基因名(Gene Name) | FZD7 |
| 别名(Alternative Names) | FZD7; Frizzled-7; Fz-7; hFz7; FzE3 |
| 基因 ID(Gene ID) | 8324.0 |
| SwissProt ID | O75084 |
| 免疫原(Immunogen) | The antiserum was produced against synthesized peptide derived from human FZD7. AA range:45-94 |

研究背景 (Background)

frizzled class receptor 7(FZD7) Homo sapiens Members of the 'frizzled' gene family encode 7-transmembrane domain proteins that are receptors for Wnt signaling proteins. The FZD7 protein contains an N-terminal signal sequence, 10 cysteine

residues typical of the cysteine-rich extracellular domain of Fz family members, 7 putative transmembrane domains, and an intracellular C-terminal tail with a PDZ domain-binding motif. FZD7 gene expression may downregulate APC function and enhance beta-catenin-mediated signals in poorly differentiated human esophageal carcinomas. [provided by RefSeq, Jul 2008],domain:Lys-Thr-X-X-X-Trp motif is involved in the activation of the Wnt/beta-catenin signaling pathway.,domain:The FZ domain is involved in binding with Wnt ligands.,function:Receptor for Wnt proteins. Most of frizzled receptors are coupled to the beta-catenin canonical signaling pathway, which leads to the activation of disheveled proteins, inhibition of GSK-3 kinase, nuclear accumulation of beta-catenin and activation of Wnt target genes. A second signaling pathway involving PKC and calcium fluxes has been seen for some family members, but it is not yet clear if it represents a distinct pathway or if it can be integrated in the canonical pathway, as PKC seems to be required for Wnt-mediated inactivation of GSK-3 kinase. Both pathways seem to involve interactions with G-proteins. May be involved in transduction and intercellular transmission of polarity information during tissue morphogenesis and/or in differentiated tissues.,similarity:Belongs to the G-protein coupled receptor Fz/Smo family.,similarity:Contains 1 FZ (frizzled) domain.,subunit:Interacts with MAGI3.,tissue specificity:High expression in adult skeletal muscle and fetal kidney, followed by fetal lung, adult heart, brain, and placenta. Specifically expressed in squamous cell esophageal carcinomas.,

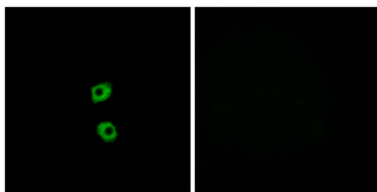
研究领域 (Research Area)

WNT;WNT-T CELLMelanogenesis;Pathways in cancer;Colorectal cancer;Basal cell carcinoma;

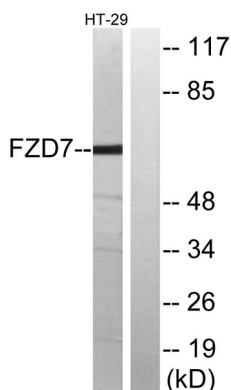
注意事项 (Note)

For research use only.

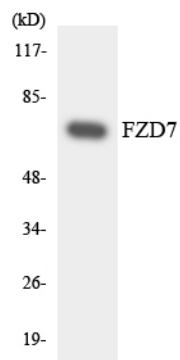
图片 (Image Data)



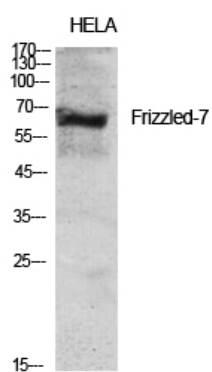
Immunofluorescence analysis of MCF7 cells, using FZD7 Antibody. The picture on the right is blocked with the synthesized peptide.



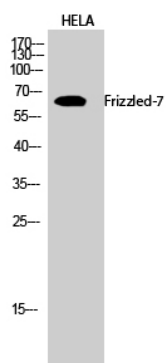
Western blot analysis of lysates from HT-29 cells, using FZD7 Antibody. The lane on the right is blocked with the synthesized peptide.



Western blot analysis of the lysates from HUVEC cells using FZD7 antibody.



Western Blot analysis of various cells using Frizzled-7 Polyclonal Antibody diluted at 1: 2000



Western Blot analysis of HELA cells using Frizzled-7 Polyclonal Antibody diluted at 1: 2000

EnkiLife 优势产品推荐

| 产品类别 | 产品货号 | 产品名称 |
|-----------------------------|----------|--|
| WB 解决方案 | RA10020 | 2h 极速 WB 即用型全流程试剂盒 |
| | RA10021 | 4h 快速 WB 即用型全流程试剂盒 |
| | RA10042 | 5h 畅享版 WB 全流程试剂盒 |
| | RA10037 | 校准级彩色预染蛋白 Marker (8-180kDa) |
| | RA10038 | 校准级彩色预染蛋白 Marker (10-250kDa) |
| | RA10039 | 校准级高分子彩色预染蛋白 Marker (25-400kDa) |
| TSA 多重荧光染色试剂盒 | RA10008 | TSA 双标三色多重荧光染色试剂盒 (mIHC) |
| | RA10009 | TSA 三标四色多重荧光染色试剂盒 (mIHC) |
| | RA10010 | TSA 四标五色多重荧光染色试剂盒 (mIHC) |
| | RA10011 | TSA 五标六色多重荧光染色试剂盒 (mIHC) |
| | RA10012 | TSA 六标七色多重荧光染色试剂盒 (mIHC) |
| IHC 检测试剂盒 | RA10006 | HRP Anti-Mouse/Rabbit IHC Detection System |
| | RA10007 | Polymer-HRP Anti-Mouse/Rabbit IHC Detection System |
| 抗体标记试剂盒 | RE80004p | 辣根过氧化物酶(HRP)抗体标记试剂盒 |
| | RE80002q | Sulfo-NHS-生物素标记试剂盒 |
| | RE80007p | Cy3 荧光素标记试剂盒 |
| | RE80011p | Fluor488 荧光素标记试剂盒 |
| | RE80017p | Fluor750 荧光素标记试剂盒 |
| | RE80005p | 藻红蛋白(R-PE) 抗体快速标记试剂盒 |
| | RE80040 | PE-Cy7 串联染料抗体快速标记试剂盒 |
| 稳转细胞系构建服务 (免费赠送全膜 WB 验证) | TS-0001 | 过表达稳转细胞系构建 |
| | TS-0002 | 敲低稳转细胞系构建 |
| | TS-0003 | 敲除细胞系构建 |

限于篇幅，更多产品详见官网：<https://www.enkilife.cn>