

**产品名称: GPRC5D Rabbit Polyclonal Antibody**

**产品货号: APRab11715**

## 产品概述 (Summary)

|                   |   |
|-------------------|---|
| 描述(Description)   | Rabbit polyclonal Antibody  |
| 宿主(Host)          | Rabbit  |
| 应用(Application)   | WB,ICC/IF,ELISA   |
| 种属反应(Reactivity)  | Human,Mouse   |
| 偶联物(Conjugation)  | Unconjugated  |
| 修饰(Modification)  | Unmodified  |
| 同种型(Isotype)      | IgG   |
| 克隆(Clonality)     | Polyclonal  |
| 剂型(Form)          | Liquid  |
| 保存条件(Storage)     | Store at 4°C short term. Aliquot and store at -20°C long term. Avoid freeze/thaw cycles.          |
| 储存溶液(Buffer)      | Liquid in PBS containing 50% glycerol, 0.5% protective protein and 0.02% New type preservative N. |
| 纯化 (Purification) | Affinity purification   |

## 产品应用(Application)

|                       |  |
|-----------------------|--|
| 稀释比(Dilution Ratio)   | WB 1:500-1:2000,ICC/IF 1:200-1:1000,ELISA 1:5000-1:10000 |
| 分子量(Molecular Weight) | 43kDa  |

## 抗原信息(Antigen Information)

|                       |  |
|-----------------------|--|
| 基因名(Gene Name)        | GPRC5D   |
| 别名(Alternative Names) | GPRC5D; G-protein coupled receptor family C group 5 member D                                       |
| 基因 ID(Gene ID)        | 55507.0  |
| SwissProt ID          | Q9NZD1   |
| 免疫原(Immunogen)        | The antiserum was produced against synthesized peptide derived from human GPRC5D. AA range:271-320 |

## 研究背景 (Background)

The protein encoded by this gene is a member of the G protein-coupled receptor family; however, the specific function of this gene has not yet been determined. [provided by RefSeq, Jul 2008],function:Unknown.,similarity:Belongs to the G-protein

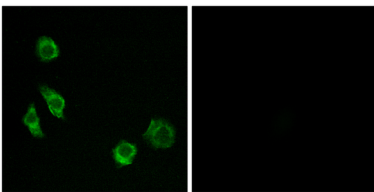
coupled receptor 3 family.,tissue specificity:Widely expressed in the peripheral system. Expression pattern is high in pancreas, medium in kidney, small intestine, spleen and testis, low in lung, colon, leukocyte, prostate and thymus and not detectable in brain, heart, liver, placenta, skeletal muscle and ovary.,

## 研究领域 (Research Area)

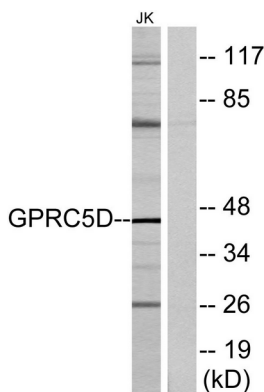
## 注意事项 (Note)

For research use only.

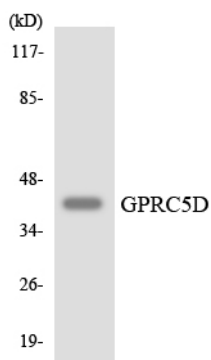
## 图片 (Image Data)



Immunofluorescence analysis of MCF7 cells, using GPRC5D Antibody. The picture on the right is blocked with the synthesized peptide.



Western blot analysis of lysates from Jurkat cells, using GPRC5D Antibody. The lane on the right is blocked with the synthesized peptide.



Western blot analysis of the lysates from HUVEC cells using GPRC5D antibody.

## EnkiLife 优势产品推荐

| 产品类别                        | 产品货号     | 产品名称   |
|-----------------------------|----------|--|
| WB 解决方案                     | RA10020  | 2h 极速 WB 即用型全流程试剂盒                                 |
|                             | RA10021  | 4h 快速 WB 即用型全流程试剂盒                                 |
|                             | RA10042  | 5h 畅享版 WB 全流程试剂盒                                   |
|                             | RA10037  | 校准级彩色预染蛋白 Marker (8-180kDa)                        |
|                             | RA10038  | 校准级彩色预染蛋白 Marker (10-250kDa)                       |
|                             | RA10039  | 校准级高分子彩色预染蛋白 Marker (25-400kDa)                    |
| TSA 多重荧光染色试剂盒               | RA10008  | TSA 双标三色多重荧光染色试剂盒 (mIHC)                           |
|                             | RA10009  | TSA 三标四色多重荧光染色试剂盒 (mIHC)                           |
|                             | RA10010  | TSA 四标五色多重荧光染色试剂盒 (mIHC)                           |
|                             | RA10011  | TSA 五标六色多重荧光染色试剂盒 (mIHC)                           |
|                             | RA10012  | TSA 六标七色多重荧光染色试剂盒 (mIHC)                           |
| IHC 检测试剂盒                   | RA10006  | HRP Anti-Mouse/Rabbit IHC Detection System         |
|                             | RA10007  | Polymer-HRP Anti-Mouse/Rabbit IHC Detection System |
| 抗体标记试剂盒                     | RE80004p | 辣根过氧化物酶(HRP)抗体标记试剂盒                                |
|                             | RE80002q | Sulfo-NHS-生物素标记试剂盒                                 |
|                             | RE80007p | Cy3 荧光素标记试剂盒                                       |
|                             | RE80011p | Fluor488 荧光素标记试剂盒                                  |
|                             | RE80017p | Fluor750 荧光素标记试剂盒                                  |
|                             | RE80005p | 藻红蛋白(R-PE) 抗体快速标记试剂盒                               |
|                             | RE80040  | PE-Cy7 串联染料抗体快速标记试剂盒                               |
| 稳转细胞系构建服务<br>(免费赠送全膜 WB 验证) | TS-0001  | 过表达稳转细胞系构建   |
|                             | TS-0002  | 敲低稳转细胞系构建  |
|                             | TS-0003  | 敲除细胞系构建  |

限于篇幅，更多产品详见官网：<https://www.enkilife.cn>