

产品名称: GRIN1 Rabbit Polyclonal Antibody
产品货号: APRab11765



产品概述 (Summary)

产品名称 (Production Name)	GRIN1 Rabbit Polyclonal Antibody
描述 (Description)	Rabbit polyclonal Antibody
宿主 (Host)	Rabbit
应用 (Application)	WB,ELISA
种属反应性 (Reactivity)	Human,Rat,Mouse

产品性能 (Performance)

偶联物 (Conjugation)	Unconjugated
修饰 (Modification)	Unmodified
同种型 (Isotype)	IgG
克隆 (Clonality)	Polyclonal
形式 (Form)	Liquid
存放说明 (Storage)	Store at 4°C short term. Aliquot and store at -20°C long term. Avoid freeze/thaw cycles.
储存溶液 (Buffer)	Liquid in PBS containing 50% glycerol, 0.5% protective protein and 0.02% New type preservative N.
纯化方式 (Purification)	Affinity purification

免疫原信息 (Immunogen)

基因名 (Gene Name)	GPRIN1
别名 (Alternative Names)	GPRIN1; KIAA1893; G protein-regulated inducer of neurite outgrowth 1; GRIN1
基因 ID (Gene ID)	114787.0
蛋白 ID (SwissProt ID)	Q7Z2K8.The antiserum was produced against synthesized peptide derived from human GPRIN1. AA range:231-280

产品应用 (Application)

稀释比 (Dilution Ratio)	WB 1:500-1:2000,ELISA 1:20000-1:40000
蛋白分子量 (Molecular Weight)	102kDa

产品名称: GRIN1 Rabbit Polyclonal Antibody
产品货号: APRab11765

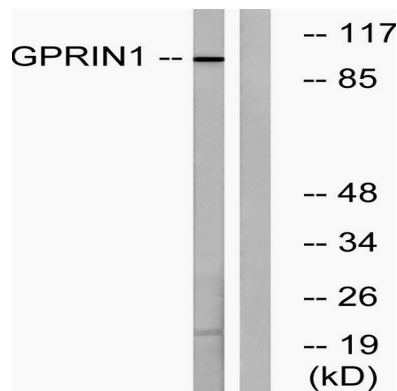


研究背景 (Background)

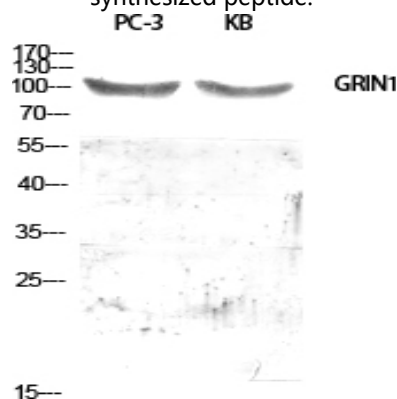
function:May be involved in neurite outgrowth.,PTM:Palmitoylation on Cys-999 and/or Cys-1000 is required for membrane targeting.,subcellular location:Highly enriched in growth cone.,subunit:Interacts with activated forms of GNAI1, GNAO1 and GNAZ.,tissue specificity:Widely expressed in the central nervous system, with highest levels in spinal cord.,function:May be involved in neurite outgrowth.,PTM:Palmitoylation on Cys-999 and/or Cys-1000 is required for membrane targeting.,subcellular location:Highly enriched in growth cone.,subunit:Interacts with activated forms of GNAI1, GNAO1 and GNAZ.,tissue specificity:Widely expressed in the central nervous system, with highest levels in spinal cord.,

研究领域 (Research Area)

图片 (Image Data)

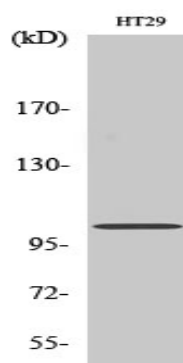


Western blot analysis of lysates from HT-29 cells, using GRIN1 Antibody. The lane on the right is blocked with the synthesized peptide.



Western Blot analysis of various cells using GRIN1 Polyclonal Antibody diluted at 1: 500

产品名称: GRIN1 Rabbit Polyclonal Antibody
产品货号: APRab11765



Western Blot analysis of HT29 cells using GRIN1 Polyclonal Antibody diluted at 1: 500

注意事项 (Note)

For research use only .