

**产品名称: MMP-7 Rabbit Polyclonal Antibody**

**产品货号: APRab13996**

### 产品概述 (Summary)

|                   |   |
|-------------------|---|
| 描述(Description)   | Rabbit polyclonal Antibody  |
| 宿主(Host)          | Rabbit  |
| 应用(Application)   | WB,IHC,ICC/IF,ELISA   |
| 种属反应(Reactivity)  | Human,Mouse,Rat,Monkey  |
| 偶联物(Conjugation)  | Unconjugated  |
| 修饰(Modification)  | Unmodified  |
| 同种型(Isotype)      | IgG   |
| 克隆(Clonality)     | Polyclonal  |
| 剂型(Form)          | Liquid  |
| 保存条件(Storage)     | Store at 4°C short term. Aliquot and store at -20°C long term. Avoid freeze/thaw cycles.          |
| 储存溶液(Buffer)      | Liquid in PBS containing 50% glycerol, 0.5% protective protein and 0.02% New type preservative N. |
| 纯化 (Purification) | Affinity purification   |

### 产品应用(Application)

|                       |   |
|-----------------------|---|
| 稀释比(Dilution Ratio)   | WB 1:500-1:2000,IHC 1:100-1:300,ICC/IF 1:50-1:200,ELISA 1:20000-1:40000 |
| 分子量(Molecular Weight) | 29kDa   |

### 抗原信息(Antigen Information)

|                       |   |
|-----------------------|---|
| 基因名(Gene Name)        | MMP7  |
| 别名(Alternative Names) | MMP7; MPSL1; PUMP1; Matrilysin; Matrin; Matrix metalloproteinase-7; MMP-7; Pump-1 protease; Uterine metalloproteinase |
| 基因 ID(Gene ID)        | 4316.0  |
| SwissProt ID          | P09237  |
| 免疫原(Immunogen)        | The antiserum was produced against synthesized peptide derived from human MMP-7. AA range:218-267                     |

### 研究背景 (Background)

matrix metalloproteinase 7(MMP7) Homo sapiens      This gene encodes a member of the peptidase M10 family of matrix

metalloproteinases (MMPs). Proteins in this family are involved in the breakdown of extracellular matrix in normal physiological processes, such as embryonic development, reproduction, and tissue remodeling, as well as in disease processes, such as arthritis and metastasis. The encoded preproprotein is proteolytically processed to generate the mature protease. This secreted protease breaks down proteoglycans, fibronectin, elastin and casein and differs from most MMP family members in that it lacks a conserved C-terminal hemopexin domain. The enzyme is involved in wound healing, and studies in mice suggest that it regulates the activity of defensins in intestinal mucosa. The gene is part of a cluster of MMP genes on chromosome 11. This gene exhibits elevated expression levels in multiple human cancers. [provided by RefSeq, Jan 2016],catalytic activity:Cleavage of 14-Ala-|-Leu-15 and 16-Tyr-|-Leu-17 in B chain of insulin. No action on collagen types I, II, IV, V. Cleaves gelatin chain alpha-2(I) > alpha-1(I),cofactor:Binds 2 calcium ions per subunit,cofactor:Binds 2 zinc ions per subunit,domain:The conserved cysteine present in the cysteine-switch motif binds the catalytic zinc ion, thus inhibiting the enzyme. The dissociation of the cysteine from the zinc ion upon the activation-peptide release activates the enzyme.,function:Degrades casein, gelatins of types I, III, IV, and V, and fibronectin. Activates procollagenase.,similarity:Belongs to the peptidase M10A family.,

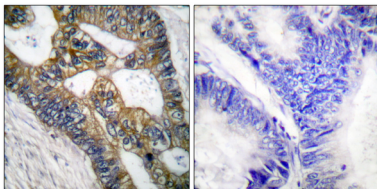
### 研究领域 (Research Area)

WNT;WNT-T CELL

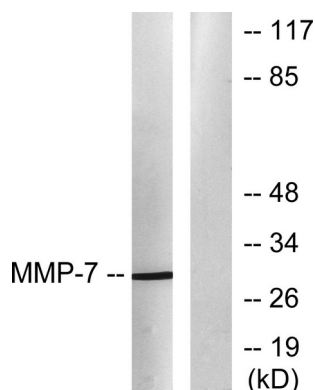
### 注意事项 (Note)

For research use only.

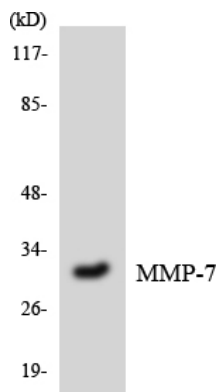
### 图片 (Image Data)



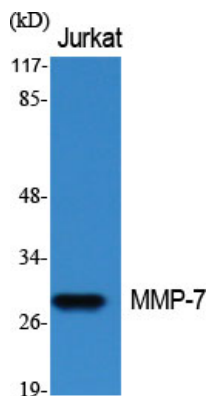
Immunohistochemistry analysis of paraffin-embedded human colon carcinoma tissue, using MMP-7 Antibody. The picture on the right is blocked with the synthesized peptide.



Western blot analysis of lysates from COS7 cells, using MMP-7 Antibody. The lane on the right is blocked with the synthesized peptide.



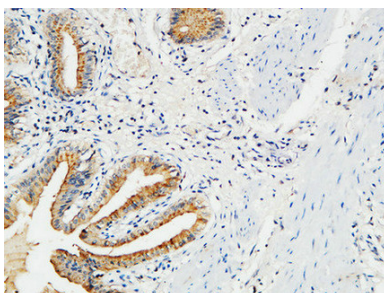
Western blot analysis of the lysates from HT-29 cells using MMP-7 antibody.



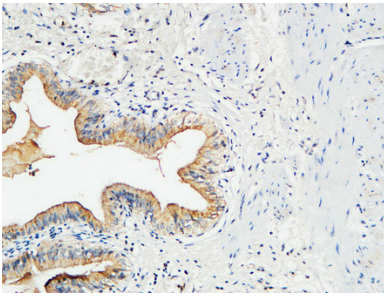
Western Blot analysis of various cells using MMP-7 Polyclonal Antibody diluted at 1 : 500



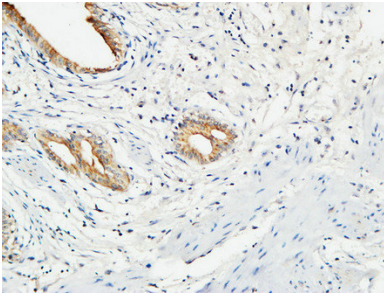
Western Blot analysis of COS7 cells using MMP-7 Polyclonal Antibody diluted at 1 : 500



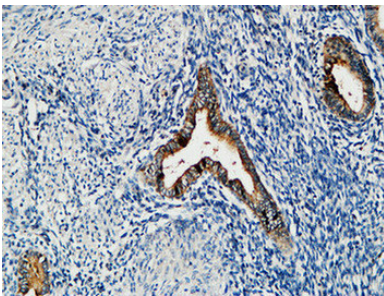
Immunohistochemical analysis of paraffin-embedded Human gallbladder. 1, Antibody was diluted at 1:100 (4°, overnight) . 2, High-pressure and temperature EDTA, pH8.0 was used for antigen retrieval. 3, Secondary antibody was diluted at 1:200 (room temperature, 30min) .



Immunohistochemical analysis of paraffin-embedded Human gallbladder. 1, Antibody was diluted at 1:100 (4°,overnight) . 2, High-pressure and temperature EDTA, pH8.0 was used for antigen retrieval. 3,Secondary antibody was diluted at 1:200 (room temperature, 30min) .



Immunohistochemical analysis of paraffin-embedded Human gallbladder. 1, Antibody was diluted at 1:100 (4°,overnight) . 2, High-pressure and temperature EDTA, pH8.0 was used for antigen retrieval. 3,Secondary antibody was diluted at 1:200 (room temperature, 30min) .



Immunohistochemical analysis of paraffin-embedded Human uterus. 1, Antibody was diluted at 1:100 (4°,overnight) . 2, High-pressure and temperature EDTA, pH8.0 was used for antigen retrieval. 3,Secondary antibody was diluted at 1:200 (room temperature, 30min) .

## EnkiLife 优势产品推荐

| 产品类别                        | 产品货号     | 产品名称   |
|-----------------------------|----------|--|
| WB 解决方案                     | RA10020  | 2h 极速 WB 即用型全流程试剂盒                                 |
|                             | RA10021  | 4h 快速 WB 即用型全流程试剂盒                                 |
|                             | RA10042  | 5h 畅享版 WB 全流程试剂盒                                   |
|                             | RA10037  | 校准级彩色预染蛋白 Marker (8-180kDa)                        |
|                             | RA10038  | 校准级彩色预染蛋白 Marker (10-250kDa)                       |
|                             | RA10039  | 校准级高分子彩色预染蛋白 Marker (25-400kDa)                    |
| TSA 多重荧光染色试剂盒               | RA10008  | TSA 双标三色多重荧光染色试剂盒 (mIHC)                           |
|                             | RA10009  | TSA 三标四色多重荧光染色试剂盒 (mIHC)                           |
|                             | RA10010  | TSA 四标五色多重荧光染色试剂盒 (mIHC)                           |
|                             | RA10011  | TSA 五标六色多重荧光染色试剂盒 (mIHC)                           |
|                             | RA10012  | TSA 六标七色多重荧光染色试剂盒 (mIHC)                           |
| IHC 检测试剂盒                   | RA10006  | HRP Anti-Mouse/Rabbit IHC Detection System         |
|                             | RA10007  | Polymer-HRP Anti-Mouse/Rabbit IHC Detection System |
| 抗体标记试剂盒                     | RE80004p | 辣根过氧化物酶(HRP)抗体标记试剂盒                                |
|                             | RE80002q | Sulfo-NHS-生物素标记试剂盒                                 |
|                             | RE80007p | Cy3 荧光素标记试剂盒                                       |
|                             | RE80011p | Fluor488 荧光素标记试剂盒                                  |
|                             | RE80017p | Fluor750 荧光素标记试剂盒                                  |
|                             | RE80005p | 藻红蛋白(R-PE) 抗体快速标记试剂盒                               |
|                             | RE80040  | PE-Cy7 串联染料抗体快速标记试剂盒                               |
| 稳转细胞系构建服务<br>(免费赠送全膜 WB 验证) | TS-0001  | 过表达稳转细胞系构建   |
|                             | TS-0002  | 敲低稳转细胞系构建  |
|                             | TS-0003  | 敲除细胞系构建  |

限于篇幅，更多产品详见官网：<https://www.enkilife.cn>