

产品名称: N/H/K-Ras Rabbit Polyclonal Antibody

产品货号: APRab14364

产品概述 (Summary)

描述(Description)	Rabbit polyclonal Antibody
宿主(Host)	Rabbit
应用(Application)	WB,IHC,ICC/IF,ELISA
种属反应(Reactivity)	Human,Mouse,Rat
偶联物(Conjugation)	Unconjugated
修饰(Modification)	Unmodified
同种型(Isotype)	IgG
克隆(Clonality)	Polyclonal
剂型(Form)	Liquid
保存条件(Storage)	Store at 4°C short term. Aliquot and store at -20°C long term. Avoid freeze/thaw cycles.
储存溶液(Buffer)	Liquid in PBS containing 50% glycerol, 0.5% protective protein and 0.02% New type preservative N.
纯化 (Purification)	Affinity purification

产品应用(Application)

稀释比(Dilution Ratio)	WB 1:500-1:2000,IHC 1:100-1:300,ICC/IF 1:100-1:300,ELISA 1:10000-1:20000
分子量(Molecular Weight)	21kDa

抗原信息(Antigen Information)

基因名(Gene Name)	NRAS/HRAS/KRAS NRAS; HRAS1; GTPase NRas; Transforming protein N-Ras; HRAS; HRAS1; GTPase HRas; H-
别名(Alternative Names)	Ras-1; Ha-Ras; Transforming protein p21; c-H-ras; p21ras; KRAS; KRAS2; RASK2; GTPase KRas; K-Ras 2; Ki-Ras; c-K-ras; c-Ki-ras
基因 ID(Gene ID)	3265/3845/4893
SwissProt ID	P01111/P01112/P01116
免疫原(Immunogen)	The antiserum was produced against synthesized peptide derived from human RASH/RASK. AA range:1-50

研究背景 (Background)

This is an N-ras oncogene encoding a membrane protein that shuttles between the Golgi apparatus and the plasma membrane. This shuttling is regulated through palmitoylation and depalmitoylation by the ZDHHC9-GOLGA7 complex. The encoded protein, which has intrinsic GTPase activity, is activated by a guanine nucleotide-exchange factor and inactivated by a GTPase activating protein. Mutations in this gene have been associated with somatic rectal cancer, follicular thyroid cancer, autoimmune lymphoproliferative syndrome, Noonan syndrome, and juvenile myelomonocytic leukemia. [provided by RefSeq, Jun 2011],disease:Defects in NRAS are a cause of juvenile myelomonocytic leukemia (JMML) [MIM:607785]. JMML is a pediatric myelodysplastic syndrome that constitutes approximately 30% of childhood cases of myelodysplastic syndrome (MDS) and 2% of leukemia.,disease:Mutations which change AA 12, 13 or 61 activate the potential of Ras to transform cultured cells and are implicated in a variety of human tumors.,enzyme regulation:Alternate between an inactive form bound to GDP and an active form bound to GTP. Activated by a guanine nucleotide-exchange factor (GEF) and inactivated by a GTPase-activating protein (GAP).,function:Ras proteins bind GDP/GTP and possess intrinsic GTPase activity.,online information:NRAS mutation db,online information:RAS proteins entry,PTM:Palmitoylated by the ZDHHC9-GOLGA7 complex. A continuous cycle of de- and re-palmitoylation regulates rapid exchange between plasma membrane and Golgi.,similarity:Belongs to the small GTPase superfamily. Ras family.,subcellular location:Shuttles between the plasma membrane and the Golgi apparatus.,

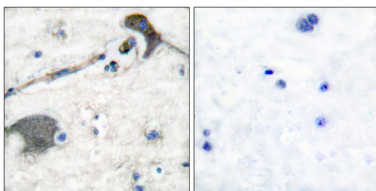
研究领域 (Research Area)

MAPK_ERK_Growth;MAPK_G_Protein;ErbB_HER;Chemokine;Axon guidance;VEGF;Tight junction;Gap junction;Natural killer cell mediated cytotoxicity;T_Cell_Receptor;B_Cell_Antigen;Fc epsilon R1;Long-term potentiation;Neurotrophin;Long-term depression;Regulates Actin and Cytoskeleton;Insulin_Receptor;GnRH;Melanogenesis;Pathways in cancer;Renal cell carcinoma;Endometrial cancer;Glioma;Prostate cancer;Thyroid cancer;Melanoma;Bladder cancer;Chronic myeloid leukemia;Acute myeloid leukemia;Non-small cell lung cancer;

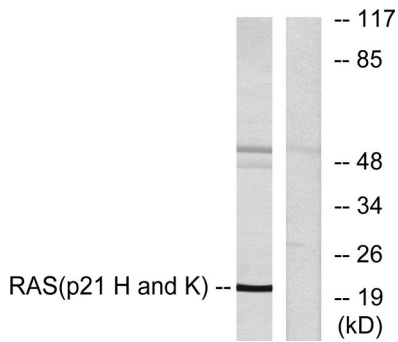
注意事项 (Note)

For research use only.

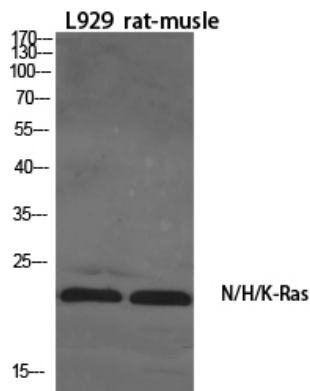
图片 (Image Data)



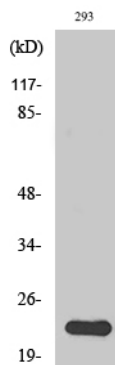
Immunohistochemistry analysis of paraffin-embedded human brain tissue, using RASH/RASK Antibody. The picture on the right is blocked with the synthesized peptide.



Western blot analysis of lysates from HeLa cells, using RASH/RASK Antibody. The lane on the right is blocked with the synthesized peptide.



Western Blot analysis of various cells using N/H/K-Ras Polyclonal Antibody diluted at 1: 1000



Western Blot analysis of 293 cells using N/H/K-Ras Polyclonal Antibody diluted at 1 : 1000

EnkiLife 优势产品推荐

产品类别	产品货号	产品名称
WB 解决方案	RA10020	2h 极速 WB 即用型全流程试剂盒
	RA10021	4h 快速 WB 即用型全流程试剂盒
	RA10042	5h 畅享版 WB 全流程试剂盒
	RA10037	校准级彩色预染蛋白 Marker (8-180kDa)
	RA10038	校准级彩色预染蛋白 Marker (10-250kDa)
	RA10039	校准级高分子彩色预染蛋白 Marker (25-400kDa)
TSA 多重荧光染色试剂盒	RA10008	TSA 双标三色多重荧光染色试剂盒 (mIHC)
	RA10009	TSA 三标四色多重荧光染色试剂盒 (mIHC)
	RA10010	TSA 四标五色多重荧光染色试剂盒 (mIHC)
	RA10011	TSA 五标六色多重荧光染色试剂盒 (mIHC)
	RA10012	TSA 六标七色多重荧光染色试剂盒 (mIHC)
IHC 检测试剂盒	RA10006	HRP Anti-Mouse/Rabbit IHC Detection System
	RA10007	Polymer-HRP Anti-Mouse/Rabbit IHC Detection System
抗体标记试剂盒	RE80004p	辣根过氧化物酶(HRP)抗体标记试剂盒
	RE80002q	Sulfo-NHS-生物素标记试剂盒
	RE80007p	Cy3 荧光素标记试剂盒
	RE80011p	Fluor488 荧光素标记试剂盒
	RE80017p	Fluor750 荧光素标记试剂盒
	RE80005p	藻红蛋白(R-PE) 抗体快速标记试剂盒
	RE80040	PE-Cy7 串联染料抗体快速标记试剂盒
稳转细胞系构建服务 (免费赠送全膜 WB 验证)	TS-0001	过表达稳转细胞系构建
	TS-0002	敲低稳转细胞系构建
	TS-0003	敲除细胞系构建

限于篇幅, 更多产品详见官网: <https://www.enkilife.cn>