

产品名称: Nup160 Rabbit Polyclonal Antibody
产品货号: APRab14980



产品概述 (Summary)

产品名称 (Production Name)	Nup160 Rabbit Polyclonal Antibody
描述 (Description)	Rabbit polyclonal Antibody
宿主 (Host)	Rabbit
应用 (Application)	WB,ELISA
种属反应性 (Reactivity)	Human,Mouse

产品性能 (Performance)

偶联物 (Conjugation)	Unconjugated
修饰 (Modification)	Unmodified
同种型 (Isotype)	IgG
克隆 (Clonality)	Polyclonal
形式 (Form)	Liquid
存放说明 (Storage)	Store at 4°C short term. Aliquot and store at -20°C long term. Avoid freeze/thaw cycles.
储存溶液 (Buffer)	Liquid in PBS containing 50% glycerol, 0.5% protective protein and 0.02% New type preservative N.
纯化方式 (Purification)	Affinity purification

免疫原信息 (Immunogen)

基因名 (Gene Name)	NUP160
别名 (Alternative Names)	NUP160; KIAA0197; NUP120; Nuclear pore complex protein Nup160; 160 kDa nucleoporin; Nucleoporin Nup160
基因 ID (Gene ID)	23279.0
蛋白 ID (SwissProt ID)	Q12769.The antiserum was produced against synthesized peptide derived from human NUP160. AA range:392-441

产品应用 (Application)

稀释比 (Dilution Ratio)	WB 1:500-1:2000,ELISA 1:10000-1:20000
蛋白分子量 (Molecular Weight)	140kDa

产品名称: Nup160 Rabbit Polyclonal Antibody
产品货号: APRab14980



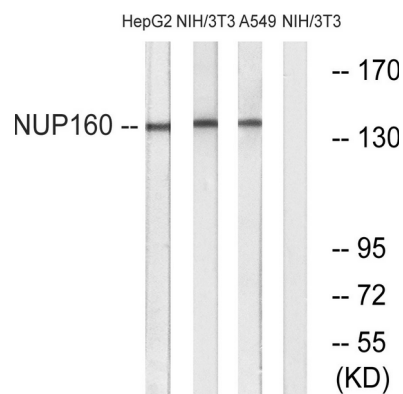
研究背景 (Background)

nucleoporin 160(NUP160) Homo sapiens NUP160 is 1 of up to 60 proteins that make up the 120-MD nuclear pore complex, which mediates nucleoplasmic transport.[supplied by OMIM, Apr 2004],caution:It is uncertain whether Met-1 or Met-35 is the initiator.,function:Involved in poly(A)+ RNA transport.,sequence caution:Probable cloning artifact. Aberrant splice sites.,subunit:Forms part of the Nup160 subcomplex in the nuclear pore which is composed of Nup160, Nup133, Nup107 and Nup96. This complex plays a role in RNA export and in tethering Nup98 and Nup153 to the nucleus.,

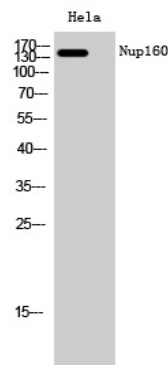
研究领域 (Research Area)

DNA / RNA; RNA Processing; Epigenetics and Nuclear Signaling; Nuclear Signaling Pathways; Nuclear Receptors; Nuclear Pore Complex; Chromosome Structure; Centromeres; Tags & Cell Markers; Subcellular Markers; Nucleus; Nuclear Pore; Signal Transduction; Protein Trafficking; Nuclear Import / Export;
Cell Biology; Cell Cycle; Cell Division; Spindle

图片 (Image Data)



Western blot analysis of lysates from NIH/3T3, A549, and HepG2 cells, using NUP160 Antibody. The lane on the right is blocked with the synthesized peptide.



Western Blot analysis of HeLa cells using Nup160 Polyclonal Antibody diluted at 1: 2000 cells nucleus extracted by Minute TM Cytoplasmic and Nuclear Fractionation kit (SC-003, Inventbiotech, MN, USA) .

产品名称: Nup160 Rabbit Polyclonal Antibody
产品货号: APRab14980



注意事项 (Note)

For research use only .