

产品名称: p35 Rabbit Polyclonal Antibody
产品货号: APRab15615

产品概述 (Summary)

描述(Description)	Rabbit polyclonal Antibody
宿主(Host)	Rabbit
应用(Application)	WB,IHC,ICC/IF,ELISA
种属反应(Reactivity)	Human,Mouse,Rat
偶联物(Conjugation)	Unconjugated
修饰(Modification)	Unmodified
同种型(Isotype)	IgG
克隆(Clonality)	Polyclonal
剂型(Form)	Liquid
保存条件(Storage)	Store at 4°C short term. Aliquot and store at -20°C long term. Avoid freeze/thaw cycles.
储存溶液(Buffer)	Liquid in PBS containing 50% glycerol, 0.5% protective protein and 0.02% New type preservative N.
纯化 (Purification)	Affinity purification

产品应用(Application)

稀释比(Dilution Ratio)	WB 1:500-1:2000,IHC 1:100-1:300,ICC/IF 1:200-1:1000,ELISA 1:10000-1:20000
分子量(Molecular Weight)	38kDa

抗原信息(Antigen Information)

基因名(Gene Name)	CDK5R1
别名(Alternative Names)	CDK5R1; CDK5R; NCK5A; Cyclin-dependent kinase 5 activator 1; CDK5 activator 1; Cyclin-dependent kinase 5 regulatory subunit 1; TPKII regulatory subunit
基因 ID(Gene ID)	8851.0
SwissProt ID	Q15078
免疫原(Immunogen)	The antiserum was produced against synthesized peptide derived from human CDK5R1. AA range:11-60

研究背景 (Background)

The protein encoded by this gene (p35) is a neuron-specific activator of cyclin-dependent kinase 5 (CDK5); the activation of

CDK5 is required for proper development of the central nervous system. The p35 form of this protein is proteolytically cleaved by calpain, generating a p25 form. The cleavage of p35 into p25 results in relocalization of the protein from the cell periphery to nuclear and perinuclear regions. P25 deregulates CDK5 activity by prolonging its activation and changing its cellular location. The p25 form accumulates in the brain neurons of patients with Alzheimer's disease. This accumulation correlates with an increase in CDK5 kinase activity, and may lead to aberrantly phosphorylated forms of the microtubule-associated protein tau, which contributes to Alzheimer's disease. [provided by RefSeq, Jul 2008],disease: Cleavage of p35 to p25 may be involved in the pathogenesis of Alzheimer disease. The p25 form accumulates in neurons in the brain of patients with Alzheimer disease, but not in normal brain. This accumulation correlates with an increase in CDK5 kinase activity. Application of amyloid beta peptide A-beta(1-42) induced the conversion of p35 to p25 in primary cortical neurons. Expression of the p25/Cdk5 complex in cultured primary neurons induces cytoskeletal disruption, morphological degeneration and apoptosis.,function: p35 is a neuron specific activator of CDK5. The complex p35/CDK5 is required for neurite outgrowth and cortical lamination. Activator of TPKII.,PTM: Probably myristoylated. The Gly-2-Ala mutant is absent of the cell periphery, suggesting that a proper myristoylation signal is essential for the proper distribution of p35.,PTM: The p35 form is proteolytically cleaved by calpain, giving rise to the p25 form. P35 has a 5 to 10 fold shorter half-life compared to p25. The conversion results in deregulation of the CDK5 kinase: p25/CDK5 kinase displays an increased and altered tau phosphorylation in comparison to the p35/CDK5 kinase in vivo.,similarity: Belongs to the cyclin-dependent kinase 5 activator family.,subcellular location: In the primary cortical neurons, p35 is present in the peripheries and nerve terminals.,subcellular location: The conversion of p35 to p25 relocalizes the protein from the cell periphery to the cytoplasm, in nuclear and perinuclear regions. In the primary cortical neurons, p25 is primarily concentrated in the cell soma and is largely absent from neurites.,subunit: Heterodimer composed of CDK5 and CDK5R (p25) and macromolecular complex composed of at least CDK5, CDK5R (p35) and CDK5RAP1 or CDK5RAP2 or CDK5RAP3. Only the heterodimer shows kinase activity (By similarity). Interacts with RASGRF2.,tissue specificity: Brain and neuron specific.,

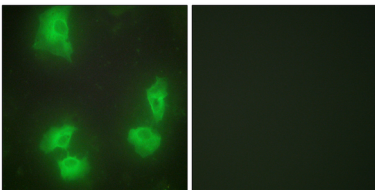
研究领域 (Research Area)

Alzheimer's disease;

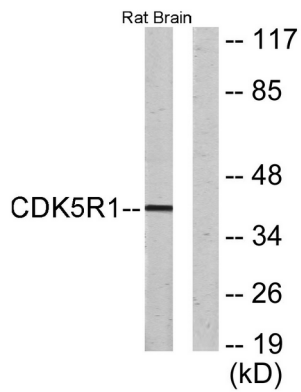
注意事项 (Note)

For research use only.

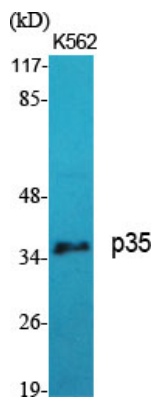
图片 (Image Data)



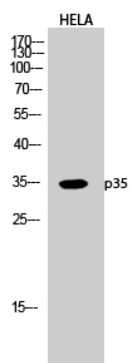
Immunofluorescence analysis of HeLa cells, using CDK5R1 Antibody. The picture on the right is blocked with the synthesized peptide.



Western blot analysis of lysates from rat brain cells, using CDK5R1 Antibody. The lane on the right is blocked with the synthesized peptide.



Western Blot analysis of various cells using p35 Polyclonal Antibody diluted at 1 : 1000



Western Blot analysis of HELA cells using p35 Polyclonal Antibody diluted at 1 : 1000

EnkiLife 优势产品推荐

产品类别	产品货号	产品名称
WB 解决方案	RA10020	2h 极速 WB 即用型全流程试剂盒
	RA10021	4h 快速 WB 即用型全流程试剂盒
	RA10042	5h 畅享版 WB 全流程试剂盒
	RA10037	校准级彩色预染蛋白 Marker (8-180kDa)
	RA10038	校准级彩色预染蛋白 Marker (10-250kDa)
	RA10039	校准级高分子彩色预染蛋白 Marker (25-400kDa)
TSA 多重荧光染色试剂盒	RA10008	TSA 双标三色多重荧光染色试剂盒 (mIHC)
	RA10009	TSA 三标四色多重荧光染色试剂盒 (mIHC)
	RA10010	TSA 四标五色多重荧光染色试剂盒 (mIHC)
	RA10011	TSA 五标六色多重荧光染色试剂盒 (mIHC)
	RA10012	TSA 六标七色多重荧光染色试剂盒 (mIHC)
IHC 检测试剂盒	RA10006	HRP Anti-Mouse/Rabbit IHC Detection System
	RA10007	Polymer-HRP Anti-Mouse/Rabbit IHC Detection System
抗体标记试剂盒	RE80004p	辣根过氧化物酶(HRP)抗体标记试剂盒
	RE80002q	Sulfo-NHS-生物素标记试剂盒
	RE80007p	Cy3 荧光素标记试剂盒
	RE80011p	Fluor488 荧光素标记试剂盒
	RE80017p	Fluor750 荧光素标记试剂盒
	RE80005p	藻红蛋白(R-PE) 抗体快速标记试剂盒
	RE80040	PE-Cy7 串联染料抗体快速标记试剂盒
稳转细胞系构建服务 (免费赠送全膜 WB 验证)	TS-0001	过表达稳转细胞系构建
	TS-0002	敲低稳转细胞系构建
	TS-0003	敲除细胞系构建

限于篇幅，更多产品详见官网：<https://www.enkilife.cn>