

产品名称: PKR1 Rabbit Polyclonal Antibody
产品货号: APRab16229



产品概述 (Summary)

产品名称 (Production Name)	PKR1 Rabbit Polyclonal Antibody
描述 (Description)	Rabbit polyclonal Antibody
宿主 (Host)	Rabbit
应用 (Application)	WB,IHC,ICC/IF,ELISA
种属反应性 (Reactivity)	Human,Mouse,Rat

产品性能 (Performance)

偶联物 (Conjugation)	Unconjugated
修饰 (Modification)	Unmodified
同种型 (Isotype)	IgG
克隆 (Clonality)	Polyclonal
形式 (Form)	Liquid
存放说明 (Storage)	Store at 4°C short term. Aliquot and store at -20°C long term. Avoid freeze/thaw cycles.
储存溶液 (Buffer)	Liquid in PBS containing 50% glycerol, 0.5% protective protein and 0.02% New type preservative N.
纯化方式 (Purification)	Affinity purification

免疫原信息 (Immunogen)

基因名 (Gene Name)	PROKR1
别名 (Alternative Names)	PROKR1; GPR73; PKR1; Prokineticin receptor 1; PK-R1; G-protein coupled receptor 73; G-protein coupled receptor ZAQ; GPR73a
基因 ID (Gene ID)	10887.0
蛋白 ID (SwissProt ID)	Q8TCW9.The antiserum was produced against synthesized peptide derived from human PKR1. AA range:19-68

产品应用 (Application)

稀释比 (Dilution Ratio)	WB 1:500-1:2000,IHC 1:100-1:500,ICC/IF 1:100-1:500,ELISA 1:5000-1:20000
蛋白分子量 (Molecular Weight)	45kDa

产品名称: PKR1 Rabbit Polyclonal Antibody
产品货号: APRab16229



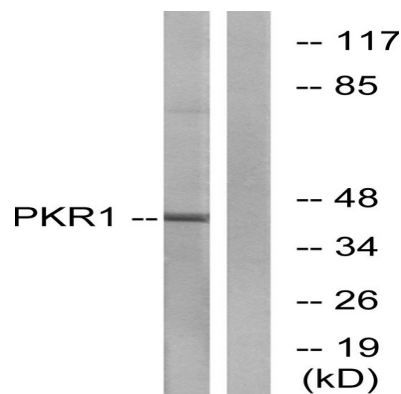
研究背景 (Background)

prokineticin receptor 1(PROKR1) Homo sapiens This gene encodes a member of the G-protein-coupled receptor family. The encoded protein binds to prokineticins (1 and 2), leading to the activation of MAPK and STAT signaling pathways. Prokineticins are protein ligands involved in angiogenesis and inflammation. The encoded protein is expressed in peripheral tissues such as those comprising the circulatory system, lungs, reproductive system, endocrine system and the gastrointestinal system. The protein may be involved in signaling in human fetal ovary during initiation of primordial follicle formation. Sequence variants in this gene may be associated with recurrent miscarriage. [provided by RefSeq, Aug 2016],function:Receptor for prokineticin 1. Exclusively coupled to the G(q) subclass of heteromeric G proteins. Activation leads to mobilization of calcium, stimulation of phosphoinositide turnover and activation of p44/p42 mitogen-activated protein kinase.,similarity:Belongs to the G-protein coupled receptor 1 family.,tissue specificity:Expressed in the stomach, throughout the small intestine, colon, rectum, thyroid gland, pituitary gland, salivary gland, adrenal gland, testis, ovary, brain, spleen, prostate and pancreas.,

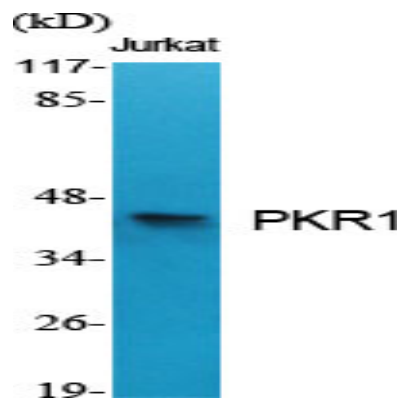
研究领域 (Research Area)

Protein Phosphorylation; Ser / Thr Kinases; PKA; Signal Transduction; Second Messenger; Nucleotide Messenger; cAMP; Cancer; Cancer Metabolism; Metabolic signaling pathway; Integration of energy metabolism; Metabolism; Pathways and Processes; Metabolic signaling pathways; Energy transfer pathways; Integration of energy

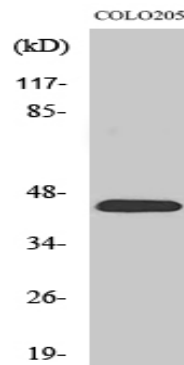
图片 (Image Data)



产品名称: PKR1 Rabbit Polyclonal Antibody
产品货号: APRab16229



Western Blot analysis of various cells using PKR1 Polyclonal Antibody



Western Blot analysis of COLO205 cells using PKR1 Polyclonal Antibody

注意事项 (Note)

For research use only .