

产品名称: POLR3H Rabbit Polyclonal Antibody
产品货号: APRab16364



产品概述 (Summary)

产品名称 (Production Name)	POLR3H Rabbit Polyclonal Antibody
描述 (Description)	Rabbit polyclonal Antibody
宿主 (Host)	Rabbit
应用 (Application)	WB,IHC,ICC/IF,ELISA
种属反应性 (Reactivity)	Human,Mouse,Rat

产品性能 (Performance)

偶联物 (Conjugation)	Unconjugated
修饰 (Modification)	Unmodified
同种型 (Isotype)	IgG
克隆 (Clonality)	Polyclonal
形式 (Form)	Liquid
存放说明 (Storage)	Store at 4°C short term. Aliquot and store at -20°C long term. Avoid freeze/thaw cycles.
储存溶液 (Buffer)	Liquid in PBS containing 50% glycerol, 0.5% protective protein and 0.02% New type preservative N.
纯化方式 (Purification)	Affinity purification

免疫原信息 (Immunogen)

基因名 (Gene Name)	POLR3H POLR3H; KIAA1665; RPC8; DNA-directed RNA polymerase III subunit RPC8;
别名 (Alternative Names)	RNA polymerase III subunit C8; DNA-directed RNA polymerase III subunit H; RNA polymerase III subunit 22.9 kDa subunit; RPC22.9
基因 ID (Gene ID)	171568.0
蛋白 ID (SwissProt ID)	Q9Y535.The antiserum was produced against synthesized peptide derived from human RPC8. AA range:151-200

产品应用 (Application)

稀释比 (Dilution Ratio)	WB 1:500-1:2000,IHC 1:100-1:300,ICC/IF 1:50-1:200,ELISA 1:20000-1:40000
蛋白分子量 (Molecular Weight)	23kDa

产品名称: POLR3H Rabbit Polyclonal Antibody
产品货号: APRab16364



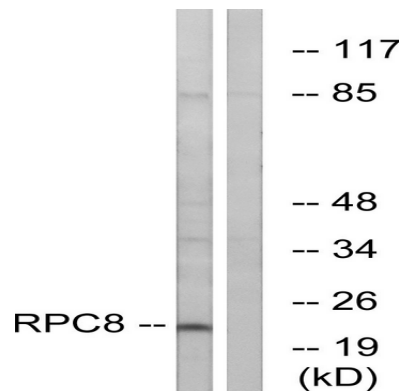
研究背景 (Background)

function:DNA-dependent RNA polymerase catalyzes the transcription of DNA into RNA using the four ribonucleoside triphosphates as substrates. Specific peripheric component of RNA polymerase III which synthesizes small RNAs, such as 5S rRNA and tRNAs.,similarity:Belongs to the eukaryotic RPB7/RPC8 RNA polymerase subunit family.,subunit:Component of the RNA polymerase III (Pol III) complex consisting of 17 subunits (By similarity). Interacts with CRCP/RPC9. POLR3H/RPC8 and CRCP/RPC9 probably form a Pol III subcomplex.,function:DNA-dependent RNA polymerase catalyzes the transcription of DNA into RNA using the four ribonucleoside triphosphates as substrates. Specific peripheric component of RNA polymerase III which synthesizes small RNAs, such as 5S rRNA and tRNAs.,similarity:Belongs to the eukaryotic RPB7/RPC8 RNA polymerase subunit family.,subunit:Component of the RNA polymerase III (Pol III) complex consisting of 17 subunits (By similarity). Interacts with CRCP/RPC9. POLR3H/RPC8 and CRCP/RPC9 probably form a Pol III subcomplex.,

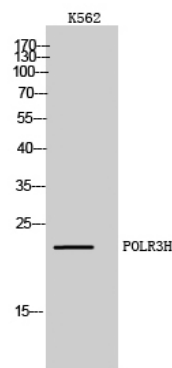
研究领域 (Research Area)

Purine metabolism;Pyrimidine metabolism;RNA polymerase;Cytosolic DNA-sensing pathway;

图片 (Image Data)



Western blot analysis of lysates from K562 cells, using RPC8 Antibody. The lane on the right is blocked with the synthesized peptide.

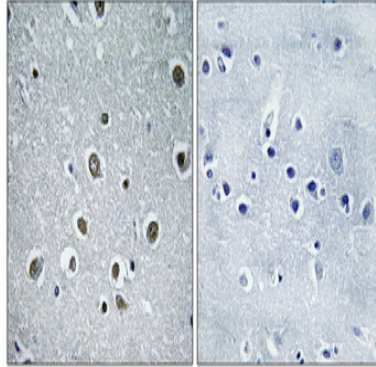


Western Blot analysis of K562 cells using POLR3H Polyclonal Antibody diluted at 1: 1000 cells nucleus extracted by Minute

产品名称: POLR3H Rabbit Polyclonal Antibody
产品货号: APRab16364



TM Cytoplasmic and Nuclear Fractionation kit (SC-003, Invent biotech, MN, USA) .



Immunohistochemical analysis of paraffin-embedded Human brain. Antibody was diluted at 1:100 (4°, overnight) . High-pressure and temperature Tris-EDTA, pH 8.0 was used for antigen retrieval. Negative control (right) obtained from antibody was pre-absorbed by immunogen peptide.

注意事项 (Note)

For research use only .