

产品名称: Ran BP-6 Rabbit Polyclonal Antibody
产品货号: APRab16879



产品概述 (Summary)

产品名称 (Production Name)	Ran BP-6 Rabbit Polyclonal Antibody
描述 (Description)	Rabbit polyclonal Antibody
宿主 (Host)	Rabbit
应用 (Application)	WB,IHC,ELISA
种属反应性 (Reactivity)	Human,Mouse,Rat,Monkey

产品性能 (Performance)

偶联物 (Conjugation)	Unconjugated
修饰 (Modification)	Unmodified
同种型 (Isotype)	IgG
克隆 (Clonality)	Polyclonal
形式 (Form)	Liquid
存放说明 (Storage)	Store at 4°C short term. Aliquot and store at -20°C long term. Avoid freeze/thaw cycles.
储存溶液 (Buffer)	Liquid in PBS containing 50% glycerol, 0.5% protective protein and 0.02% New type preservative N.
纯化方式 (Purification)	Affinity purification

免疫原信息 (Immunogen)

基因名 (Gene Name)	RANBP6
别名 (Alternative Names)	RANBP6; Ran-binding protein 6; RanBP6
基因 ID (Gene ID)	26953.0
蛋白 ID (SwissProt ID)	O60518.The antiserum was produced against synthesized peptide derived from human RANBP6. AA range:800-849

产品应用 (Application)

稀释比 (Dilution Ratio)	WB 1:500-1:2000,IHC 1:50-1:300,ELISA 1:2000-1:20000
蛋白分子量 (Molecular Weight)	125kDa

研究背景 (Background)

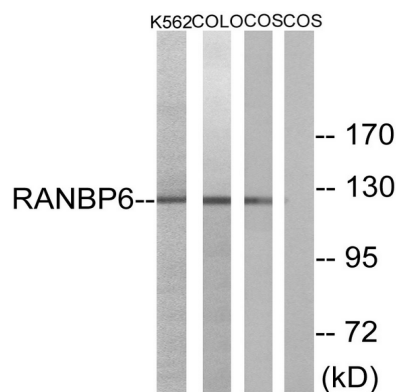
产品名称: Ran BP-6 Rabbit Polyclonal Antibody
产品货号: APRab16879



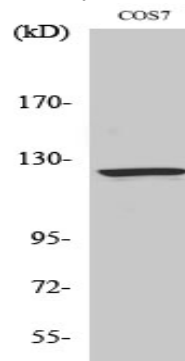
function:May function in nuclear protein import as nuclear transport receptor.,similarity:Belongs to the importin beta family.,similarity:Contains 7 HEAT repeats.,function:May function in nuclear protein import as nuclear transport receptor.,similarity:Belongs to the importin beta family.,similarity:Contains 7 HEAT repeats.,

研究领域 (Research Area)

图片 (Image Data)



Western blot analysis of lysates from COS7, K562, and COLO cells, using RANBP6 Antibody. The lane on the right is blocked with the synthesized peptide.



Western Blot analysis of various cells using Ran BP-6 Polyclonal Antibody

注意事项 (Note)

For research use only .