

产品名称: Repo-Man Rabbit Polyclonal Antibody  
产品货号: APRab17025



## 产品概述 (Summary)

产品名称 (Production Name)	Repo-Man Rabbit Polyclonal Antibody
描述 (Description)	Rabbit polyclonal Antibody
宿主 (Host)	Rabbit
应用 (Application)	WB,IHC,ICC/IF,ELISA
种属反应性 (Reactivity)	Human

## 产品性能 (Performance)

偶联物 (Conjugation)	Unconjugated
修饰 (Modification)	Unmodified
同种型 (Isotype)	IgG
克隆 (Clonality)	Polyclonal
形式 (Form)	Liquid
存放说明 (Storage)	Store at 4°C short term. Aliquot and store at -20°C long term. Avoid freeze/thaw cycles.
储存溶液 (Buffer)	Liquid in PBS containing 50% glycerol, 0.5% protective protein and 0.02% New type preservative N.
纯化方式 (Purification)	Affinity purification

## 免疫原信息 (Immunogen)

基因名 (Gene Name)	CDCA2
别名 (Alternative Names)	CDCA2; Cell division cycle-associated protein 2; Recruits PP1 onto mitotic chromatin at anaphase protein; Repo-Man
基因 ID (Gene ID)	157313.0
蛋白 ID (SwissProt ID)	Q69YH5.The antiserum was produced against synthesized peptide derived from human CDCA2. AA range:511-560

## 产品应用 (Application)

稀释比 (Dilution Ratio)	WB 1:500-1:2000,IHC 1:100-1:300,ICC/IF 1:50-1:200,ELISA 1:5000-1:10000
蛋白分子量 (Molecular Weight)	120-130kDa

产品名称: Repo-Man Rabbit Polyclonal Antibody  
产品货号: APRab17025



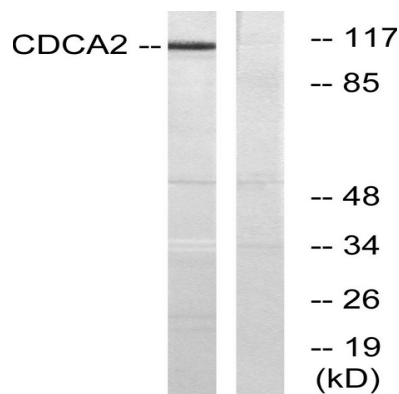
## 研究背景 (Background)

cell division cycle associated 2(CDCA2) Homo sapiens This gene encodes a targeting subunit of the cell-cycle associated protein, protein phosphatase 1, with a role in targeting this protein to chromatin during anaphase. These two proteins comprise a phosphatase complex that is involved in nuclear envelope reformation and regulation of the DNA damage response. The encoded protein may also play a role in cancer progression. Alternative splicing results in multiple transcript variants. [provided by RefSeq, Dec 2015],function:Regulator of chromosome structure during mitosis required for condensin-depleted chromosomes to retain their compact architecture through anaphase. Acts by mediating the recruitment of phosphatase PP1-gamma subunit (PPP1CC) to chromatin at anaphase and into the following interphase. At anaphase onset, its association with chromatin targets a pool of PPP1CC to dephosphorylate substrates.,PTM:Phosphorylated by CDK1. May regulate its subcellular location.,subcellular location:Excluded from the nucleolus. Present in nucleoplasm throughout the G1, S and G2 stages of the cell cycle. During M phase, it becomes diffuse throughout the cell as the nuclear membrane breaks down, and faintly accumulates later on metaphase chromatin. As the cell progresses to anaphase, it accumulates on chromatin.,subunit:Interacts with PPP1CC.,tissue specificity:Ubiquitously expressed.,

## 研究领域 (Research Area)

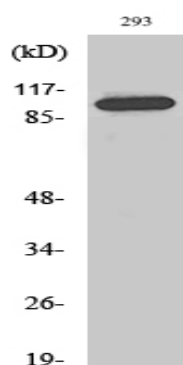
Chromatin Modifying Enzymes; Phosphorylation; Cell Biology; Cell Cycle; Cell Division; Other cell division antibodies; Epigenetics and Nuclear Signaling; Chromosome Structure; Chromatin assembly

## 图片 (Image Data)



Western blot analysis of lysates from 293 cells, using CDCA2 Antibody. The lane on the right is blocked with the synthesized peptide.

产品名称: Repo-Man Rabbit Polyclonal Antibody  
产品货号: APRab17025



Western Blot analysis of various cells using Repo-Man Polyclonal Antibody diluted at 1: 2000 cells nucleus extracted by Minute TM Cytoplasmic and Nuclear Fractionation kit (SC-003, Inventbiotech, MN, USA) .

#### 注意事项 (Note)

For research use only .