

产品名称: SR-1D Rabbit Polyclonal Antibody
产品货号: APRab18244



产品概述 (Summary)

产品名称 (Production Name)	SR-1D Rabbit Polyclonal Antibody
描述 (Description)	Rabbit polyclonal Antibody
宿主 (Host)	Rabbit
应用 (Application)	WB,IHC,ICC/IF,ELISA
种属反应性 (Reactivity)	Human,Mouse,Rat

产品性能 (Performance)

偶联物 (Conjugation)	Unconjugated
修饰 (Modification)	Unmodified
同种型 (Isotype)	IgG
克隆 (Clonality)	Polyclonal
形式 (Form)	Liquid
存放说明 (Storage)	Store at 4°C short term. Aliquot and store at -20°C long term. Avoid freeze/thaw cycles.
储存溶液 (Buffer)	Liquid in PBS containing 50% glycerol, 0.5% protective protein and 0.02% New type preservative N.
纯化方式 (Purification)	Affinity purification

免疫原信息 (Immunogen)

基因名 (Gene Name)	HTR1D
别名 (Alternative Names)	HTR1D; HTR1DA; HTRL; 5-hydroxytryptamine receptor 1D; 5-HT-1D; 5-HT1D; 5-HT-1D-alpha; Serotonin receptor 1D
基因 ID (Gene ID)	3352.0
蛋白 ID (SwissProt ID)	P28221.Synthesized peptide derived from SR-1D . at AA range: 120-200

产品应用 (Application)

稀释比 (Dilution Ratio)	WB 1:500-1:2000,IHC 1:100-1:300,ICC/IF 1:50-1:200,ELISA 1:5000-1:20000
蛋白分子量 (Molecular Weight)	41kDa

研究背景 (Background)

产品名称: SR-1D Rabbit Polyclonal Antibody
产品货号: APRab18244

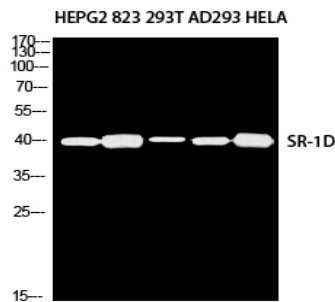


function: This is one of the several different receptors for 5-hydroxytryptamine (serotonin), a biogenic hormone that functions as a neurotransmitter, a hormone, and a mitogen. The activity of this receptor is mediated by G proteins that inhibit adenylate cyclase activity., similarity: Belongs to the G-protein coupled receptor 1 family., function: This is one of the several different receptors for 5-hydroxytryptamine (serotonin), a biogenic hormone that functions as a neurotransmitter, a hormone, and a mitogen. The activity of this receptor is mediated by G proteins that inhibit adenylate cyclase activity., similarity: Belongs to the G-protein coupled receptor 1 family.,

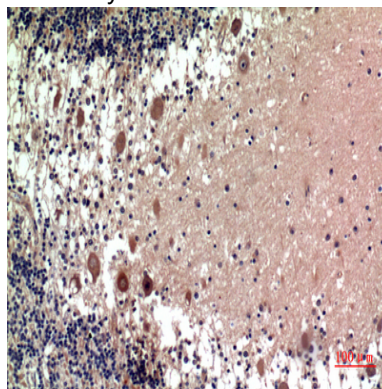
研究领域 (Research Area)

Neuroactive ligand-receptor interaction;

图片 (Image Data)



Western blot analysis of HEPG2 823 293T AD293 HELA using SR-1D antibody. Antibody was diluted at 1:500. Secondary antibody was diluted at 1:20000



Immunohistochemical analysis of paraffin-embedded human-brain, antibody was diluted at 1:100

注意事项 (Note)

For research use only .