

产品名称: STAG3 Rabbit Polyclonal Antibody  
产品货号: APRab18332



## 产品概述 (Summary)

产品名称 (Production Name)	STAG3 Rabbit Polyclonal Antibody
描述 (Description)	Rabbit polyclonal Antibody
宿主 (Host)	Rabbit
应用 (Application)	WB,IHC,ICC/IF,ELISA
种属反应性 (Reactivity)	Human,Rat,Mouse

## 产品性能 (Performance)

偶联物 (Conjugation)	Unconjugated
修饰 (Modification)	Unmodified
同种型 (Isotype)	IgG
克隆 (Clonality)	Polyclonal
形式 (Form)	Liquid
存放说明 (Storage)	Store at 4°C short term. Aliquot and store at -20°C long term. Avoid freeze/thaw cycles.
储存溶液 (Buffer)	Liquid in PBS containing 50% glycerol, 0.5% protective protein and 0.02% New type preservative N.
纯化方式 (Purification)	Affinity purification

## 免疫原信息 (Immunogen)

基因名 (Gene Name)	STAG3
别名 (Alternative Names)	STAG3; Cohesin subunit SA-3; SCC3 homolog 3; Stromal antigen 3; Stromalin-3
基因 ID (Gene ID)	10734.0
蛋白 ID (SwissProt ID)	Q9UJ98.The antiserum was produced against synthesized peptide derived from human STAG3. AA range:1161-1210

## 产品应用 (Application)

稀释比 (Dilution Ratio)	WB 1:500-1:2000,IHC 1:100-1:300,ICC/IF 1:50-1:200,ELISA 1:5000-1:20000
蛋白分子量 (Molecular Weight)	139kDa

产品名称: STAG3 Rabbit Polyclonal Antibody  
产品货号: APRab18332



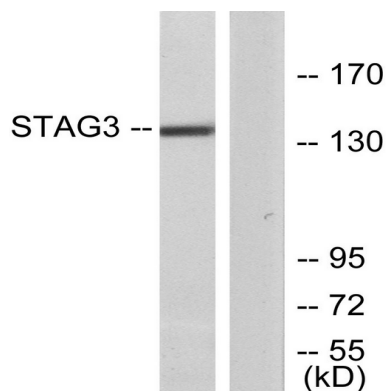
## 研究背景 (Background)

The protein encoded by this gene is expressed in the nucleus and is a subunit of the cohesin complex which regulates the cohesion of sister chromatids during cell division. A mutation in this gene is associated with premature ovarian failure. Alternate splicing results in multiple transcript variants encoding distinct isoforms. This gene has multiple pseudogenes. [provided by RefSeq, Apr 2014],function:Meiosis specific component of cohesin complex. The cohesin complex is required for the cohesion of sister chromatids after DNA replication. The cohesin complex apparently forms a large proteinaceous ring within which sister chromatids can be trapped. At anaphase, the complex is cleaved and dissociates from chromatin, allowing sister chromatids to segregate. The meiosis-specific cohesin complex probably replaces mitosis specific cohesin complex when it dissociates from chromatin during prophase I.,similarity:Belongs to the SCC3 family.,similarity:Contains 1 SCD (stromalin conservative) domain.,subcellular location:Associates with chromatin. In prophase I stage of meiosis, it is found along the axial elements of synaptonemal complexes. In late-pachytene-diotene, the bulk of protein dissociates from the chromosome arms probably because of phosphorylation by PLK, except at centromeres, where cohesin complexes remain. It however remains chromatin associated at the centromeres up to metaphase I. During anaphase I, it probably dissociates from centromeres, allowing chromosomes segregation.,subunit:Component of the meiosis-specific cohesin complex, which also contains the SMC1 (SMC1A or SMC1B) and SMC3 heterodimer. Such complex likely contains RAD21, or the meiosis-specific related protein REC8.,tissue specificity:Testis specific.,

## 研究领域 (Research Area)

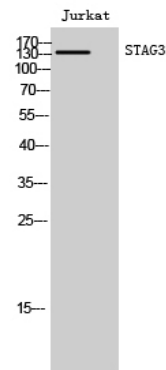
Oocyte meiosis;

## 图片 (Image Data)



Western blot analysis of lysates from Jurkat cells, using STAG3 Antibody. The lane on the right is blocked with the synthesized peptide.

产品名称: STAG3 Rabbit Polyclonal Antibody  
产品货号: APRab18332



Western Blot analysis of Jurkat cells using STAG3 Polyclonal Antibody cells nucleus extracted by Minute TM Cytoplasmic and Nuclear Fractionation kit (SC-003, Inventbiotech, MN, USA) .

#### 注意事项 (Note)

For research use only .