

**产品名称:** TCF-3 Rabbit Polyclonal Antibody

**产品货号:** APRab18733

### 产品概述 (Summary)

|                   |   |
|-------------------|---|
| 描述(Description)   | Rabbit polyclonal Antibody  |
| 宿主(Host)          | Rabbit  |
| 应用(Application)   | WB,ELISA  |
| 种属反应(Reactivity)  | Human,Mouse   |
| 偶联物(Conjugation)  | Unconjugated  |
| 修饰(Modification)  | Unmodified  |
| 同种型(Isotype)      | IgG   |
| 克隆(Clonality)     | Polyclonal  |
| 剂型(Form)          | Liquid  |
| 保存条件(Storage)     | Store at 4°C short term. Aliquot and store at -20°C long term. Avoid freeze/thaw cycles.          |
| 储存溶液(Buffer)      | Liquid in PBS containing 50% glycerol, 0.5% protective protein and 0.02% New type preservative N. |
| 纯化 (Purification) | Affinity purification   |

### 产品应用(Application)

|                       |                                      |
|-----------------------|--------------------------------------|
| 稀释比(Dilution Ratio)   | WB 1:500-1:2000,ELISA 1:5000-1:20000 |
| 分子量(Molecular Weight) | 63kDa                                |

### 抗原信息(Antigen Information)

|                       |  |
|-----------------------|--|
| 基因名(Gene Name)        | TCF7L1   |
| 别名(Alternative Names) | TCF7L1; TCF3; Transcription factor 7-like 1; HMG box transcription factor 3; TCF-3                 |
| 基因 ID(Gene ID)        | 83439.0  |
| SwissProt ID          | Q9HCS4   |
| 免疫原(Immunogen)        | The antiserum was produced against synthesized peptide derived from human TCF7L1. AA range:321-370 |

### 研究背景 (Background)

This gene encodes a member of the T cell factor/lymphoid enhancer factor family of transcription factors. These transcription factors are activated by beta catenin, mediate the Wnt signaling pathway and are antagonized by the transforming growth

factor beta signaling pathway. The encoded protein contains a high mobility group-box DNA binding domain and participates in the regulation of cell cycle genes and cellular senescence. [provided by RefSeq, Nov 2010],domain:The putative Groucho interaction domain between the N-terminal CTNNB1 binding domain and the HMG-box is necessary for repression of the transactivation mediated by TCF7L1 and CTNNB1.,function:Participates in the Wnt signaling pathway. Binds to DNA and acts as a repressor in the absence of CTNNB1, and as an activator in its presence. Necessary for the terminal differentiation of epidermal cells, the formation of keratohyalin granules and the development of the barrier function of the epidermis (By similarity). Down-regulates NQO1, leading to increased mitomycin c resistance.,similarity:Belongs to the TCF/LEF family.,similarity:Contains 1 HMG box DNA-binding domain.,subunit:Binds the armadillo repeat of CTNNB1 and forms a stable complex.,tissue specificity:Detected in hair follicles and skin keratinocytes, and at lower levels in stomach epithelium.,

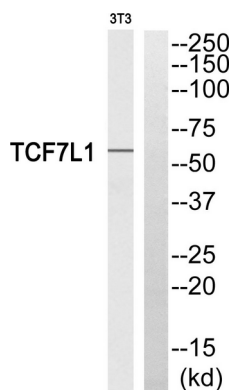
### 研究领域 (Research Area)

Stem cell pathway; Adherens\_Junction; Protein\_Acetylation

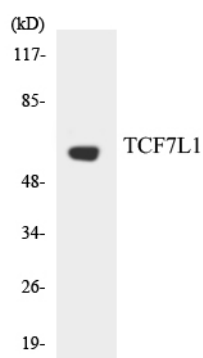
### 注意事项 (Note)

For research use only.

### 图片 (Image Data)



Western blot analysis of TCF7L1 Antibody. The lane on the right is blocked with the TCF7L1 peptide.



Western blot analysis of the lysates from HUVEC cells using TCF7L1 antibody.

## EnkiLife 优势产品推荐

| 产品类别                        | 产品货号     | 产品名称   |
|-----------------------------|----------|--|
| WB 解决方案                     | RA10020  | 2h 极速 WB 即用型全流程试剂盒                                 |
|                             | RA10021  | 4h 快速 WB 即用型全流程试剂盒                                 |
|                             | RA10042  | 5h 畅享版 WB 全流程试剂盒                                   |
|                             | RA10037  | 校准级彩色预染蛋白 Marker (8-180kDa)                        |
|                             | RA10038  | 校准级彩色预染蛋白 Marker (10-250kDa)                       |
|                             | RA10039  | 校准级高分子彩色预染蛋白 Marker (25-400kDa)                    |
| TSA 多重荧光染色试剂盒               | RA10008  | TSA 双标三色多重荧光染色试剂盒 (mIHC)                           |
|                             | RA10009  | TSA 三标四色多重荧光染色试剂盒 (mIHC)                           |
|                             | RA10010  | TSA 四标五色多重荧光染色试剂盒 (mIHC)                           |
|                             | RA10011  | TSA 五标六色多重荧光染色试剂盒 (mIHC)                           |
|                             | RA10012  | TSA 六标七色多重荧光染色试剂盒 (mIHC)                           |
| IHC 检测试剂盒                   | RA10006  | HRP Anti-Mouse/Rabbit IHC Detection System         |
|                             | RA10007  | Polymer-HRP Anti-Mouse/Rabbit IHC Detection System |
| 抗体标记试剂盒                     | RE80004p | 辣根过氧化物酶(HRP)抗体标记试剂盒                                |
|                             | RE80002q | Sulfo-NHS-生物素标记试剂盒                                 |
|                             | RE80007p | Cy3 荧光素标记试剂盒                                       |
|                             | RE80011p | Fluor488 荧光素标记试剂盒                                  |
|                             | RE80017p | Fluor750 荧光素标记试剂盒                                  |
|                             | RE80005p | 藻红蛋白(R-PE) 抗体快速标记试剂盒                               |
|                             | RE80040  | PE-Cy7 串联染料抗体快速标记试剂盒                               |
| 稳转细胞系构建服务<br>(免费赠送全膜 WB 验证) | TS-0001  | 过表达稳转细胞系构建   |
|                             | TS-0002  | 敲低稳转细胞系构建  |
|                             | TS-0003  | 敲除细胞系构建  |

限于篇幅，更多产品详见官网：<https://www.enkilife.cn>