

**产品名称:** TIEG2 Rabbit Polyclonal Antibody

**产品货号:** APRab18927

### 产品概述 (Summary)

描述(Description)	Rabbit polyclonal Antibody
宿主(Host)	Rabbit
应用(Application)	WB,IHC,ICC/IF,ELISA
种属反应(Reactivity)	Human,Mouse
偶联物(Conjugation)	Unconjugated
修饰(Modification)	Unmodified
同种型(Isotype)	IgG
克隆(Clonality)	Polyclonal
剂型(Form)	Liquid
保存条件(Storage)	Store at 4°C short term. Aliquot and store at -20°C long term. Avoid freeze/thaw cycles.
储存溶液(Buffer)	Liquid in PBS containing 50% glycerol, 0.5% protective protein and 0.02% New type preservative N.
纯化 (Purification)	Affinity purification

### 产品应用(Application)

稀释比(Dilution Ratio)	WB 1:500-1:2000,IHC 1:100-1:300,ICC/IF 1:200-1:1000,ELISA 1:10000-1:20000
分子量(Molecular Weight)	55kDa

### 抗原信息(Antigen Information)

基因名(Gene Name)	KLF11
别名(Alternative Names)	KLF11; FKLF; TIEG2; Krueppel-like factor 11; Transforming growth factor-beta-inducible early growth response protein 2; TGFB-inducible early growth response protein 2; TIEG-2
基因 ID(Gene ID)	8462.0
SwissProt ID	O14901
免疫原(Immunogen)	The antiserum was produced against synthesized peptide derived from human KLF11. AA range:1-50

### 研究背景 (Background)

The protein encoded by this gene is a zinc finger transcription factor that binds to SP1-like sequences in epsilon- and gamma-

globin gene promoters. This binding inhibits cell growth and causes apoptosis. Defects in this gene are a cause of maturity-onset diabetes of the young type 7 (MODY7). Three transcript variants encoding two different isoforms have been found for this gene. [provided by RefSeq, Apr 2010], caution: PubMed:11087666 sequence was originally thought to originate from mouse., disease: Defects in KLF11 are the cause of maturity-onset diabetes of the young type 7 (MODY7) [MIM:610508]. MODY [MIM:606391] has an autosomal dominant inheritance, onset at age less than 25 years and a primary defect in insulin secretion. MODY pedigrees are usually multigenerational families with penetrance of 80 to 95%. Patients have a nonobese body habitus and the so-called metabolic syndrome characterized by diabetes, insulin resistance, hypertension, and hypertriglyceridemia is absent., function: Transcription factor. Activates the epsilon- and gamma-globin gene promoters and, to a much lower degree, the beta-globin gene and represses promoters containing SP1-like binding inhibiting cell growth. Represses transcription of SMAD7 which enhances TGF-beta signaling. Induces apoptosis., induction: By TGF-beta., similarity: Belongs to the Sp1 C2H2-type zinc-finger protein family., similarity: Contains 3 C2H2-type zinc fingers., tissue specificity: Ubiquitous. Higher expression in erythroid cells.,

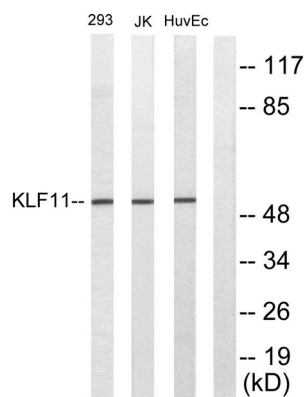
## 研究领域 (Research Area)

Epigenetics and Nuclear Signaling; Transcription; Domain Families; Zinc Finger; Krueppel like factor

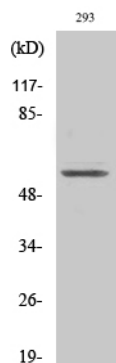
## 注意事项 (Note)

For research use only.

## 图片 (Image Data)



Western blot analysis of lysates from 293, Jurkat, and HUVEC cells, using KLF11 Antibody. The lane on the right is blocked with the synthesized peptide.



Western Blot analysis of various cells using TIEG2 Polyclonal Antibody cells nucleus extracted by Minute TM Cytoplasmic and Nuclear Fractionation kit (SC-003, Invent biotech, MN, USA).



## EnkiLife 优势产品推荐

产品类别	产品货号	产品名称
WB 解决方案	RA10020	2h 极速 WB 即用型全流程试剂盒
	RA10021	4h 快速 WB 即用型全流程试剂盒
	RA10042	5h 畅享版 WB 全流程试剂盒
	RA10037	校准级彩色预染蛋白 Marker (8-180kDa)
	RA10038	校准级彩色预染蛋白 Marker (10-250kDa)
	RA10039	校准级高分子彩色预染蛋白 Marker (25-400kDa)
TSA 多重荧光染色试剂盒	RA10008	TSA 双标三色多重荧光染色试剂盒 (mIHC)
	RA10009	TSA 三标四色多重荧光染色试剂盒 (mIHC)
	RA10010	TSA 四标五色多重荧光染色试剂盒 (mIHC)
	RA10011	TSA 五标六色多重荧光染色试剂盒 (mIHC)
	RA10012	TSA 六标七色多重荧光染色试剂盒 (mIHC)
IHC 检测试剂盒	RA10006	HRP Anti-Mouse/Rabbit IHC Detection System
	RA10007	Polymer-HRP Anti-Mouse/Rabbit IHC Detection System
抗体标记试剂盒	RE80004p	辣根过氧化物酶(HRP)抗体标记试剂盒
	RE80002q	Sulfo-NHS-生物素标记试剂盒
	RE80007p	Cy3 荧光素标记试剂盒
	RE80011p	Fluor488 荧光素标记试剂盒
	RE80017p	Fluor750 荧光素标记试剂盒
	RE80005p	藻红蛋白(R-PE) 抗体快速标记试剂盒
	RE80040	PE-Cy7 串联染料抗体快速标记试剂盒
稳转细胞系构建服务 (免费赠送全膜 WB 验证)	TS-0001	过表达稳转细胞系构建
	TS-0002	敲低稳转细胞系构建
	TS-0003	敲除细胞系构建

限于篇幅，更多产品详见官网：<https://www.enkilife.cn>