

产品名称: TIN2 Rabbit Polyclonal Antibody

产品货号: APRab18956

产品概述 (Summary)

描述(Description)	Rabbit polyclonal Antibody
宿主(Host)	Rabbit
应用(Application)	WB,IHC,ICC/IF,ELISA
种属反应(Reactivity)	Human,Rat,Mouse
偶联物(Conjugation)	Unconjugated
修饰(Modification)	Unmodified
同种型(Isotype)	IgG
克隆(Clonality)	Polyclonal
剂型(Form)	Liquid
保存条件(Storage)	Store at 4°C short term. Aliquot and store at -20°C long term. Avoid freeze/thaw cycles.
储存溶液(Buffer)	Liquid in PBS containing 50% glycerol, 0.5% protective protein and 0.02% New type preservative N.
纯化 (Purification)	Affinity purification

产品应用(Application)

稀释比(Dilution Ratio)	WB 1:500-1:2000,IHC 1:100-1:300,ICC/IF 1:50-1:200,ELISA 1:5000-1:20000
分子量(Molecular Weight)	53kDa

抗原信息(Antigen Information)

基因名(Gene Name)	TINF2
别名(Alternative Names)	TINF2; TIN2; TERF1-interacting nuclear factor 2; TRF1-interacting nuclear protein 2
基因 ID(Gene ID)	26277.0
SwissProt ID	Q9BSI4
免疫原(Immunogen)	The antiserum was produced against synthesized peptide derived from human TINF2. AA range:71-120

研究背景 (Background)

This gene encodes one of the proteins of the shelterin, or telosome, complex which protects telomeres by allowing the cell to distinguish between telomeres and regions of DNA damage. The protein encoded by this gene is a critical part of shelterin; it

interacts with the three DNA-binding proteins of the shelterin complex, and it is important for assembly of the complex. Mutations in this gene cause dyskeratosis congenita (DKC), an inherited bone marrow failure syndrome. [provided by RefSeq, Mar 2010],alternative products:Experimental confirmation may be lacking for some isoforms,disease:Defects in TINF2 are a cause of dyskeratosis congenita autosomal dominant (ADDKC) [MIM:127550]; also known as dyskeratosis congenita Scoggins type. ADDKC is a rare, progressive bone marrow failure syndrome characterized by the triad of reticulated skin hyperpigmentation, nail dystrophy, and mucosal leukoplakia. Early mortality is often associated with bone marrow failure, infections, fatal pulmonary complications, or malignancy.,disease:Defects in TINF2 are a cause of retinopathy exudative with bone marrow failure (ERBMF) [MIM:268130]; also known as Revesz syndrome. ERBMF is characterized by bilateral exudative retinopathy, bone marrow hypoplasia, nail dystrophy, fine hair, cerebellar hypoplasia, and growth retardation.,function:Component of the shelterin complex (telosome) that is involved in the regulation of telomere length and protection. Shelterin associates with arrays of double-stranded TTAGGG repeats added by telomerase and protects chromosome ends; without its protective activity, telomeres are no longer hidden from the DNA damage surveillance and chromosome ends are inappropriately processed by DNA repair pathways. Plays a role in shelterin complex assembly.,subcellular location:Associated with telomeres.,subunit:Monomer. Found in a complex with POT1; TERF1 and TNKS1. Component of the shelterin complex (telosome) composed of TERF1, TERF2, TINF2, TERF2IP ACD and POT1. Binds to TERF1 and ACD.,tissue specificity:Detected in heart, brain, placenta, lung, liver, skeletal muscle, kidney and pancreas.,

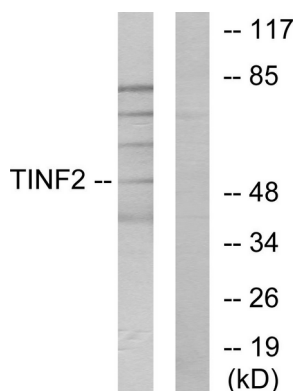
研究领域 (Research Area)

Epigenetics and Nuclear Signaling

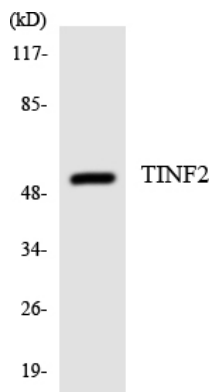
注意事项 (Note)

For research use only.

图片 (Image Data)



Western blot analysis of lysates from HUVEC cells, using TINF2 Antibody. The lane on the right is blocked with the synthesized peptide.



Western blot analysis of the lysates from HeLa cells using TINF2 antibody.

EnkiLife 优势产品推荐

产品类别	产品货号	产品名称
WB 解决方案	RA10020	2h 极速 WB 即用型全流程试剂盒
	RA10021	4h 快速 WB 即用型全流程试剂盒
	RA10042	5h 畅享版 WB 全流程试剂盒
	RA10037	校准级彩色预染蛋白 Marker (8-180kDa)
	RA10038	校准级彩色预染蛋白 Marker (10-250kDa)
	RA10039	校准级高分子彩色预染蛋白 Marker (25-400kDa)
TSA 多重荧光染色试剂盒	RA10008	TSA 双标三色多重荧光染色试剂盒 (mIHC)
	RA10009	TSA 三标四色多重荧光染色试剂盒 (mIHC)
	RA10010	TSA 四标五色多重荧光染色试剂盒 (mIHC)
	RA10011	TSA 五标六色多重荧光染色试剂盒 (mIHC)
	RA10012	TSA 六标七色多重荧光染色试剂盒 (mIHC)
IHC 检测试剂盒	RA10006	HRP Anti-Mouse/Rabbit IHC Detection System
	RA10007	Polymer-HRP Anti-Mouse/Rabbit IHC Detection System
抗体标记试剂盒	RE80004p	辣根过氧化物酶(HRP)抗体标记试剂盒
	RE80002q	Sulfo-NHS-生物素标记试剂盒
	RE80007p	Cy3 荧光素标记试剂盒
	RE80011p	Fluor488 荧光素标记试剂盒
	RE80017p	Fluor750 荧光素标记试剂盒
	RE80005p	藻红蛋白(R-PE) 抗体快速标记试剂盒
	RE80040	PE-Cy7 串联染料抗体快速标记试剂盒
稳转细胞系构建服务 (免费赠送全膜 WB 验证)	TS-0001	过表达稳转细胞系构建
	TS-0002	敲低稳转细胞系构建
	TS-0003	敲除细胞系构建

限于篇幅，更多产品详见官网：<https://www.enkilife.cn>