

**产品名称: TOPRS Rabbit Polyclonal Antibody**

**产品货号: APRab19132**

### 产品概述 (Summary)

描述(Description)	Rabbit polyclonal Antibody
宿主(Host)	Rabbit
应用(Application)	WB,ELISA
种属反应(Reactivity)	Human,Mouse
偶联物(Conjugation)	Unconjugated
修饰(Modification)	Unmodified
同种型(Isotype)	IgG
克隆(Clonality)	Polyclonal
剂型(Form)	Liquid
保存条件(Storage)	Store at 4°C short term. Aliquot and store at -20°C long term. Avoid freeze/thaw cycles.
储存溶液(Buffer)	Liquid in PBS containing 50% glycerol, and 0.02% New type preservative N.
纯化 (Purification)	Affinity purification

### 产品应用(Application)

稀释比(Dilution Ratio)	WB 1:500-1:2000,ELISA 1:5000-1:20000
分子量(Molecular Weight)	114kDa

### 抗原信息(Antigen Information)

基因名(Gene Name)	TOPORS LUN TP53BPL
别名(Alternative Names)	
基因 ID(Gene ID)	10210.0
SwissProt ID	Q9NS56
免疫原(Immunogen)	Synthesized peptide derived from part region of human protein

### 研究背景 (Background)

This gene encodes a nuclear protein which is serine and arginine rich, and contains a RING-type zinc finger domain. It is highly expressed in the testis, and functions as an ubiquitin-protein E3 ligase. Mutations in this gene are associated with retinitis pigmentosa type 31. Alternatively spliced transcript variants, encoding different isoforms, have been observed for this locus. [provided by RefSeq, Sep 2010],caution:Was originally (PubMed:11278651) thought to bind to the palindromic consensus

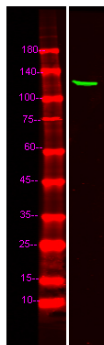
sequence 5'-TCCCAGCACTTTGGGA-3' and to regulate the transcription of numerous genes in the lung.,disease:Defects in TOPORS are the cause of retinitis pigmentosa type 31 (RP31) [MIM:609923]. RP leads to degeneration of retinal photoreceptor cells. Patients typically have night vision blindness and loss of midperipheral visual field. As their condition progresses, they lose their far peripheral visual field and eventually central vision as well. RP31 inheritance is autosomal dominant.,function:Functions as an ubiquitin-protein E3 ligase and as an E3 SUMO1-protein ligase. Can both ubiquitinate and sumoylate p53.,induction:By genotoxic agents such as cisplatin and camptothecin.,PTM:Sumoylated.,similarity:Contains 1 RING-type zinc finger.,subcellular location:Localizes to discrete nuclear foci which partly overlap with PML nuclear bodies.,subunit:Interacts with PARK7/DJ-1 (By similarity). Interacts with TOP1. Interacts with p53. Interacts with the SUMO1 conjugating enzyme UBE2I. Interacts with SUMO1.,tissue specificity:Expressed at highest levels in testis and at lower levels in adrenal gland, bone marrow, brain, colon, heart, kidney, liver, muscle, ovary, pancreas, placenta, prostate, skeletal muscle, skin, small intestine, spleen, stomach, testis, thymus, thyroid and uterus. Expressed in the alveolar epithelium of the lung. Expression is commonly decreased in colon adenocarcinomas and lung cancers.,

## 研究领域 (Research Area)

## 注意事项 (Note)

For research use only.

## 图片 (Image Data)



Western Blot analysis of Hela lysis, using primary antibody at 1:1000 dilution. Secondary antibody was diluted at 1:10000

## EnkiLife 优势产品推荐

产品类别	产品货号	产品名称
WB 解决方案	RA10020	2h 极速 WB 即用型全流程试剂盒
	RA10021	4h 快速 WB 即用型全流程试剂盒
	RA10042	5h 畅享版 WB 全流程试剂盒
	RA10037	校准级彩色预染蛋白 Marker (8-180kDa)
	RA10038	校准级彩色预染蛋白 Marker (10-250kDa)
	RA10039	校准级高分子彩色预染蛋白 Marker (25-400kDa)
TSA 多重荧光染色试剂盒	RA10008	TSA 双标三色多重荧光染色试剂盒 (mIHC)
	RA10009	TSA 三标四色多重荧光染色试剂盒 (mIHC)
	RA10010	TSA 四标五色多重荧光染色试剂盒 (mIHC)
	RA10011	TSA 五标六色多重荧光染色试剂盒 (mIHC)
	RA10012	TSA 六标七色多重荧光染色试剂盒 (mIHC)
IHC 检测试剂盒	RA10006	HRP Anti-Mouse/Rabbit IHC Detection System
	RA10007	Polymer-HRP Anti-Mouse/Rabbit IHC Detection System
抗体标记试剂盒	RE80004p	辣根过氧化物酶(HRP)抗体标记试剂盒
	RE80002q	Sulfo-NHS-生物素标记试剂盒
	RE80007p	Cy3 荧光素标记试剂盒
	RE80011p	Fluor488 荧光素标记试剂盒
	RE80017p	Fluor750 荧光素标记试剂盒
	RE80005p	藻红蛋白(R-PE) 抗体快速标记试剂盒
	RE80040	PE-Cy7 串联染料抗体快速标记试剂盒
稳转细胞系构建服务 (免费赠送全膜 WB 验证)	TS-0001	过表达稳转细胞系构建
	TS-0002	敲低稳转细胞系构建
	TS-0003	敲除细胞系构建

限于篇幅，更多产品详见官网：<https://www.enkilife.cn>