

产品名称: Trk B Rabbit Polyclonal Antibody

产品货号: APRab19285

产品概述 (Summary)

描述(Description)	Rabbit polyclonal Antibody
宿主(Host)	Rabbit
应用(Application)	WB,IHC,ICC/IF,ELISA
种属反应(Reactivity)	Human,Mouse,Rat,ColP
偶联物(Conjugation)	Unconjugated
修饰(Modification)	Unmodified
同种型(Isotype)	IgG
克隆(Clonality)	Polyclonal
剂型(Form)	Liquid
保存条件(Storage)	Store at 4°C short term. Aliquot and store at -20°C long term. Avoid freeze/thaw cycles.
储存溶液(Buffer)	Liquid in PBS containing 50% glycerol, 0.5% protective protein and 0.02% New type preservative N.
纯化 (Purification)	Affinity purification

产品应用(Application)

稀释比(Dilution Ratio)	WB 1:500-1:2000,IHC 1:100-1:300,ICC/IF 1:200-1:1000,ELISA 1:5000-1:20000
分子量(Molecular Weight)	92kDa

抗原信息(Antigen Information)

基因名(Gene Name)	NTRK2
别名(Alternative Names)	NTRK2; TRKB; BDNF/NT-3 growth factors receptor; GP145-TrkB; Trk-B; Neurotrophic tyrosine kinase receptor type 2; TrkB tyrosine kinase; Tropomyosin-related kinase B
基因 ID(Gene ID)	4915.0
SwissProt ID	Q16620
免疫原(Immunogen)	The antiserum was produced against synthesized peptide derived from human Trk B. AA range:481-530

研究背景 (Background)

This gene encodes a member of the neurotrophic tyrosine receptor kinase (NTRK) family. This kinase is a membrane-bound

receptor that, upon neurotrophin binding, phosphorylates itself and members of the MAPK pathway. Signalling through this kinase leads to cell differentiation. Mutations in this gene have been associated with obesity and mood disorders. Alternative splicing results in multiple transcript variants. [provided by RefSeq, May 2014], alternative products: Additional isoforms seem to exist, catalytic activity: $\text{ATP} + \text{a [protein]-L-tyrosine} = \text{ADP} + \text{a [protein]-L-tyrosine phosphate}$, function: Receptor for brain-derived neurotrophic factor (BDNF), neurotrophin-3 and neurotrophin-4/5 but not nerve growth factor (NGF). Involved in the development and/or maintenance of the nervous system. This is a tyrosine-protein kinase receptor. Known substrates for the TRK receptors are SHC1, PI-3 kinase, and PLC-gamma-1., PTM: Ligand-mediated auto-phosphorylation., similarity: Belongs to the protein kinase superfamily. Tyr protein kinase family., similarity: Belongs to the protein kinase superfamily. Tyr protein kinase family. Insulin receptor subfamily., similarity: Contains 1 protein kinase domain., similarity: Contains 2 Ig-like C2-type (immunoglobulin-like) domains., similarity: Contains 2 LRR (leucine-rich) repeats., subunit: Exists in a dynamic equilibrium between monomeric (low affinity) and dimeric (high affinity) structures. Binds SH2B2. Interacts with SQSTM1 and KIDINS220., tissue specificity: Isoform TrkB is widely expressed, mainly in the nervous tissue. In the CNS, expression is observed in the cerebral cortex, hippocampus, thalamus, choroid plexus, granular layer of the cerebellum, brain stem, and spinal cord. In the peripheral nervous system, it is expressed in many cranial ganglia, the ophtalmic nerve, the vestibular system, multiple facial structures, the submaxillary glands, and dorsal root ganglia. Isoform TrkB-T1 is expressed in multiple tissues, mainly in brain, pancreas, kidney and heart. Isoform TrkB-T-Shc is predominantly expressed in brain.,

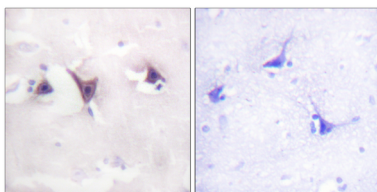
研究领域 (Research Area)

MAPK_ERK_Growth; MAPK_G_Protein; Neurotrophin;

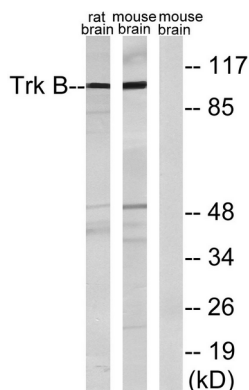
注意事项 (Note)

For research use only.

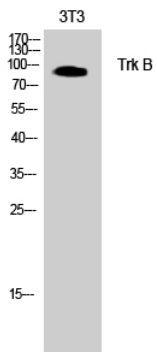
图片 (Image Data)



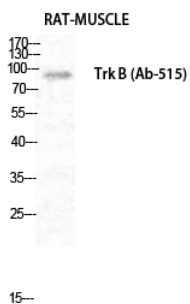
Immunohistochemistry analysis of paraffin-embedded human brain tissue, using Trk B Antibody. The picture on the right is blocked with the synthesized peptide.



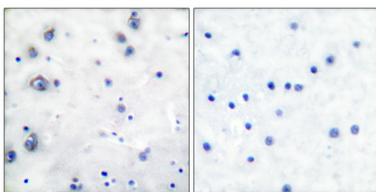
Western blot analysis of lysates from rat brain and mouse brain, treated with PBS 60', using Trk B Antibody. The lane on the right is blocked with the synthesized peptide.



Western Blot analysis of rat brain cells using Trk B Polyclonal Antibody diluted at 1: 500. Secondary antibody was diluted at 1:20000



Western Blot analysis of RAT-MUSCLE cells using Trk B Polyclonal Antibody diluted at 1: 500. Secondary antibody was diluted at 1:20000



Immunohistochemical analysis of paraffin-embedded Human breast cancer. Antibody was diluted at 1:100 (4°, overnight). High-pressure and temperature Tris-EDTA, pH 8.0 was used for antigen retrieval. Negative control (right) obtained from antibody was pre-absorbed by immunogen peptide.

EnkiLife 优势产品推荐

产品类别	产品货号	产品名称
WB 解决方案	RA10020	2h 极速 WB 即用型全流程试剂盒
	RA10021	4h 快速 WB 即用型全流程试剂盒
	RA10042	5h 畅享版 WB 全流程试剂盒
	RA10037	校准级彩色预染蛋白 Marker (8-180kDa)
	RA10038	校准级彩色预染蛋白 Marker (10-250kDa)
	RA10039	校准级高分子彩色预染蛋白 Marker (25-400kDa)
TSA 多重荧光染色试剂盒	RA10008	TSA 双标三色多重荧光染色试剂盒 (mIHC)
	RA10009	TSA 三标四色多重荧光染色试剂盒 (mIHC)
	RA10010	TSA 四标五色多重荧光染色试剂盒 (mIHC)
	RA10011	TSA 五标六色多重荧光染色试剂盒 (mIHC)
	RA10012	TSA 六标七色多重荧光染色试剂盒 (mIHC)
IHC 检测试剂盒	RA10006	HRP Anti-Mouse/Rabbit IHC Detection System
	RA10007	Polymer-HRP Anti-Mouse/Rabbit IHC Detection System
抗体标记试剂盒	RE80004p	辣根过氧化物酶(HRP)抗体标记试剂盒
	RE80002q	Sulfo-NHS-生物素标记试剂盒
	RE80007p	Cy3 荧光素标记试剂盒
	RE80011p	Fluor488 荧光素标记试剂盒
	RE80017p	Fluor750 荧光素标记试剂盒
	RE80005p	藻红蛋白(R-PE) 抗体快速标记试剂盒
	RE80040	PE-Cy7 串联染料抗体快速标记试剂盒
稳转细胞系构建服务 (免费赠送全膜 WB 验证)	TS-0001	过表达稳转细胞系构建
	TS-0002	敲低稳转细胞系构建
	TS-0003	敲除细胞系构建

限于篇幅，更多产品详见官网：<https://www.enkilife.cn>