

产品名称: WDHD1 Rabbit Polyclonal Antibody

产品货号: APRab19874

产品概述 (Summary)

描述(Description)	Rabbit polyclonal Antibody
宿主(Host)	Rabbit
应用(Application)	WB,IHC,ICC/IF,ELISA
种属反应(Reactivity)	Human,Rat,Mouse
偶联物(Conjugation)	Unconjugated
修饰(Modification)	Unmodified
同种型(Isotype)	IgG
克隆(Clonality)	Polyclonal
剂型(Form)	Liquid
保存条件(Storage)	Store at 4°C short term. Aliquot and store at -20°C long term. Avoid freeze/thaw cycles.
储存溶液(Buffer)	Liquid in PBS containing 50% glycerol, 0.5% protective protein and 0.02% New type preservative N.
纯化 (Purification)	Affinity purification

产品应用(Application)

稀释比(Dilution Ratio)	WB 1:500-1:2000,IHC 1:100-1:300,ICC/IF 1:50-1:200,ELISA 1:5000-1:20000
分子量(Molecular Weight)	126kDa

抗原信息(Antigen Information)

基因名(Gene Name)	WDHD1
别名(Alternative Names)	WDHD1; AND1; WD repeat and HMG-box DNA-binding protein 1; Acidic nucleoplasmic DNA-binding protein 1; And-1
基因 ID(Gene ID)	11169.0
SwissProt ID	O75717
免疫原(Immunogen)	The antiserum was produced against synthesized peptide derived from human WDHD1. AA range:721-770

研究背景 (Background)

The protein encoded by this gene contains multiple N-terminal WD40 domains and a C-terminal high mobility group (HMG)

box. WD40 domains are found in a variety of eukaryotic proteins and may function as adaptor/regulatory modules in signal transduction, pre-mRNA processing and cytoskeleton assembly. HMG boxes are found in many eukaryotic proteins involved in chromatin assembly, transcription and replication. Alternative splicing results in two transcript variants encoding different isoforms. [provided by RefSeq, Jul 2008],caution:The sequence shown here is derived from an Ensembl automatic analysis pipeline and should be considered as preliminary data.,function:Binds DNA with high affinity. May also be involved in protein-protein interactions.,PTM:Phosphorylated upon DNA damage, probably by ATM or ATR.,similarity:Contains 1 HMG box DNA-binding domain.,similarity:Contains 7 WD repeats.,

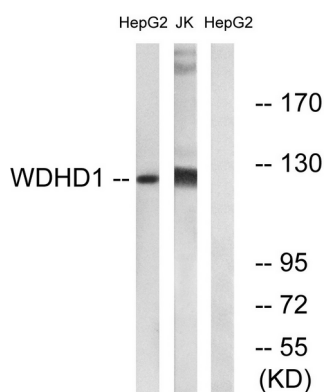
研究领域 (Research Area)

Epigenetics and Nuclear Signaling; DNA / RNA; DNA Synthesis; Chromatin Binding Proteins; DNA / RNA binding

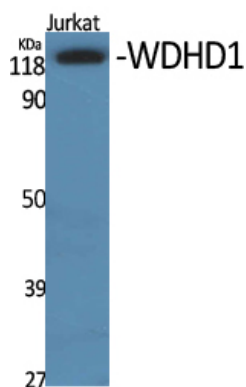
注意事项 (Note)

For research use only.

图片 (Image Data)



Western blot analysis of lysates from Jurkat and HepG2 cells, using WDHD1 Antibody. The lane on the right is blocked with the synthesized peptide.



Western Blot analysis of various cells using WDHD1 Polyclonal Antibody. Secondary antibody was diluted at 1:20000

EnkiLife 优势产品推荐

产品类别	产品货号	产品名称
WB 解决方案	RA10020	2h 极速 WB 即用型全流程试剂盒
	RA10021	4h 快速 WB 即用型全流程试剂盒
	RA10042	5h 畅享版 WB 全流程试剂盒
	RA10037	校准级彩色预染蛋白 Marker (8-180kDa)
	RA10038	校准级彩色预染蛋白 Marker (10-250kDa)
	RA10039	校准级高分子彩色预染蛋白 Marker (25-400kDa)
TSA 多重荧光染色试剂盒	RA10008	TSA 双标三色多重荧光染色试剂盒 (mIHC)
	RA10009	TSA 三标四色多重荧光染色试剂盒 (mIHC)
	RA10010	TSA 四标五色多重荧光染色试剂盒 (mIHC)
	RA10011	TSA 五标六色多重荧光染色试剂盒 (mIHC)
	RA10012	TSA 六标七色多重荧光染色试剂盒 (mIHC)
IHC 检测试剂盒	RA10006	HRP Anti-Mouse/Rabbit IHC Detection System
	RA10007	Polymer-HRP Anti-Mouse/Rabbit IHC Detection System
抗体标记试剂盒	RE80004p	辣根过氧化物酶(HRP)抗体标记试剂盒
	RE80002q	Sulfo-NHS-生物素标记试剂盒
	RE80007p	Cy3 荧光素标记试剂盒
	RE80011p	Fluor488 荧光素标记试剂盒
	RE80017p	Fluor750 荧光素标记试剂盒
	RE80005p	藻红蛋白(R-PE) 抗体快速标记试剂盒
	RE80040	PE-Cy7 串联染料抗体快速标记试剂盒
稳转细胞系构建服务 (免费赠送全膜 WB 验证)	TS-0001	过表达稳转细胞系构建
	TS-0002	敲低稳转细胞系构建
	TS-0003	敲除细胞系构建

限于篇幅，更多产品详见官网：<https://www.enkilife.cn>