

**产品名称: BMP4 (16W18) Rabbit Monoclonal Antibody**

**产品货号: AMRe07598**

### 产品概述 (Summary)

描述(Description)	Recombinant rabbit monoclonal antibody
宿主(Host)	Rabbit
应用(Application)	WB,IHC,ICC/IF,FC,IP
种属反应(Reactivity)	Human
偶联物(Conjugation)	Unconjugated
修饰(Modification)	Unmodified
同种型(Isotype)	IgG
克隆(Clonality)	Monoclonal
剂型(Form)	Liquid
保存条件(Storage)	Store at 4°C short term. Aliquot and store at -20°C long term. Avoid freeze/thaw cycles.
储存溶液(Buffer)	Supplied in 50mM Tris-Glycine(pH 7.4), 0.15M NaCl, 40%Glycerol, 0.01% New type preservative N and 0.05% protective protein.
纯化 (Purification)	Affinity purification

### 产品应用(Application)

稀释比(Dilution Ratio)	WB 1:2000-1:10000,IHC 1:20-1:100,ICC/IF 1:100-1:200,FC 1:20-1:100,IP 1:20-1:50
分子量(Molecular Weight)	47kDa

### 抗原信息(Antigen Information)

基因名(Gene Name)	BMP4
别名(Alternative Names)	BMP-2B; BMP-4; BMP2B; BMP2B1; bone morphogenetic protein 4; DVR4; ZYME
基因 ID(Gene ID)	652.0
SwissProt ID	P12644
免疫原(Immunogen)	A synthetic peptide of human BMP4

### 研究背景 (Background)

Bone morphogenetic proteins (BMPs) were first identified as molecules that can induce ectopic bone and cartilage formation. BMPs belongs to the TGF- $\beta$  superfamily, playing many diverse functions during development. BMPs are synthesized as precursor proteins and then processed by cleavage to release the c-terminal mature BMP. BMPs initiate signaling by binding to

a receptor complex containing type I and type II serine/threonine receptor kinases that then phosphorylate Smad (mainly Smad1, 5 and 8), resulting the translocation of Smad into the nucleus. BMP was also reported to activate MAPK pathways in some systems. Growth factor of the TGF-beta superfamily that plays essential roles in many developmental processes, including neurogenesis, vascular development, angiogenesis and osteogenesis (PubMed:31363885). Acts in concert with PTHLH/PTHRP to stimulate ductal outgrowth during embryonic mammary development and to inhibit hair follicle induction (By similarity). Initiates the canonical BMP signaling cascade by associating with type I receptor BMPRI1A and type II receptor BMPRI2 (PubMed:25868050, PubMed:8006002). Once all three components are bound together in a complex at the cell surface, BMPRI2 phosphorylates and activates BMPRI1A. In turn, BMPRI1A propagates signal by phosphorylating SMAD1/5/8 that travel to the nucleus and act as activators and repressors of transcription of target genes (PubMed:25868050, PubMed:29212066). Can also signal through non- canonical BMP pathways such as ERK/MAP kinase, PI3K/Akt, or SRC cascades (PubMed:31363885). For example, induces SRC phosphorylation which, in turn, activates VEGFR2, leading to an angiogenic response (PubMed:31363885).

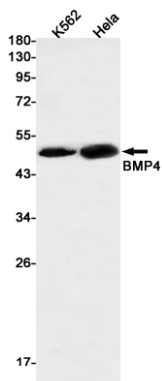
### 研究领域 (Research Area)

Cardiovascular; Angiogenesis; Growth Factors; TGF; Stem Cells; Signaling Pathways; TGF beta; Secreted; Developmental Biology; Organogenesis; Gut development; Gut specification; Nervous system development; Excretory system development; Kidney development

### 注意事项 (Note)

For research use only.

### 图片 (Image Data)



Western blot detection of BMP4 in K562,HeLa cell lysates using BMP4 antibody(1:500 diluted).

## EnkiLife 优势产品推荐

产品类别	产品货号	产品名称
WB 解决方案	RA10020	2h 极速 WB 即用型全流程试剂盒
	RA10021	4h 快速 WB 即用型全流程试剂盒
	RA10042	5h 畅享版 WB 全流程试剂盒
	RA10037	校准级彩色预染蛋白 Marker (8-180kDa)
	RA10038	校准级彩色预染蛋白 Marker (10-250kDa)
	RA10039	校准级高分子彩色预染蛋白 Marker (25-400kDa)
TSA 多重荧光染色试剂盒	RA10008	TSA 双标三色多重荧光染色试剂盒 (mIHC)
	RA10009	TSA 三标四色多重荧光染色试剂盒 (mIHC)
	RA10010	TSA 四标五色多重荧光染色试剂盒 (mIHC)
	RA10011	TSA 五标六色多重荧光染色试剂盒 (mIHC)
	RA10012	TSA 六标七色多重荧光染色试剂盒 (mIHC)
IHC 检测试剂盒	RA10006	HRP Anti-Mouse/Rabbit IHC Detection System
	RA10007	Polymer-HRP Anti-Mouse/Rabbit IHC Detection System
抗体标记试剂盒	RE80004p	辣根过氧化物酶(HRP)抗体标记试剂盒
	RE80002q	Sulfo-NHS-生物素标记试剂盒
	RE80007p	Cy3 荧光素标记试剂盒
	RE80011p	Fluor488 荧光素标记试剂盒
	RE80017p	Fluor750 荧光素标记试剂盒
	RE80005p	藻红蛋白(R-PE) 抗体快速标记试剂盒
	RE80040	PE-Cy7 串联染料抗体快速标记试剂盒
稳转细胞系构建服务 (免费赠送全膜 WB 验证)	TS-0001	过表达稳转细胞系构建
	TS-0002	敲低稳转细胞系构建
	TS-0003	敲除细胞系构建

限于篇幅，更多产品详见官网：<https://www.enkilife.cn>