

产品名称: Ephrin A1 (13M11) Rabbit Monoclonal Antibody

产品货号: AMRe10531

产品概述 (Summary)

| | |
|-------------------|---|
| 描述(Description) | Recombinant rabbit monoclonal antibody |
| 宿主(Host) | Rabbit |
| 应用(Application) | WB |
| 种属反应(Reactivity) | Human |
| 偶联物(Conjugation) | Unconjugated |
| 修饰(Modification) | Unmodified |
| 同种型(Isotype) | IgG |
| 克隆(Clonality) | Monoclonal |
| 剂型(Form) | Liquid |
| 保存条件(Storage) | Store at 4°C short term. Aliquot and store at -20°C long term. Avoid freeze/thaw cycles. Rabbit IgG in phosphate buffered saline , pH 7.4, 150mM NaCl, 0.02% New type preservative |
| 储存溶液(Buffer) | N and 50% glycerol. Store at +4°C short term. Store at -20°C long term. Avoid freeze / thaw cycle. |
| 纯化 (Purification) | Affinity purification |

产品应用(Application)

| | |
|-----------------------|------------------|
| 稀释比(Dilution Ratio) | WB 1:1000-1:5000 |
| 分子量(Molecular Weight) | 24kDa |

抗原信息(Antigen Information)

| | |
|-----------------------|--|
| 基因名(Gene Name) | EFNA1 |
| 别名(Alternative Names) | B61; EFL1; ECKLG; EPLG1; LERK1; LERK-1; TNFAIP4; |
| 基因 ID(Gene ID) | 1942.0 |
| SwissProt ID | P20827 |
| 免疫原(Immunogen) | A synthetic peptide of human Ephrin A1 |

研究背景 (Background)

Plays an important role in angiogenesis and tumor neovascularization. The recruitment of VAV2, VAV3 and PI3-kinase p85 subunit by phosphorylated EPHA2 is critical for EFNA1-induced RAC1 GTPase activation and vascular endothelial cell migration

and assembly (By similarity). Cell surface GPI-bound ligand for Eph receptors, a family of receptor tyrosine kinases which are crucial for migration, repulsion and adhesion during neuronal, vascular and epithelial development. Binds promiscuously Eph receptors residing on adjacent cells, leading to contact-dependent bidirectional signaling into neighboring cells. Plays an important role in angiogenesis and tumor neovascularization. The recruitment of VAV2, VAV3 and PI3-kinase p85 subunit by phosphorylated EPHA2 is critical for EFNA1-induced RAC1 GTPase activation and vascular endothelial cell migration and assembly. Exerts anti-oncogenic effects in tumor cells through activation and down- regulation of EPHA2. Activates EPHA2 by inducing tyrosine phosphorylation which leads to its internalization and degradation. Acts as a negative regulator in the tumorigenesis of gliomas by down- regulating EPHA2 and FAK. Can evoke collapse of embryonic neuronal growth cone and regulates dendritic spine morphogenesis.

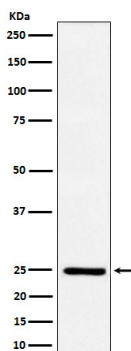
研究领域 (Research Area)

Axon guidance;

注意事项 (Note)

For research use only.

图片 (Image Data)



Western blot analysis of Ephrin A1 expression in HUVEC cell treated with TNF alpha.

EnkiLife 优势产品推荐

| 产品类别 | 产品货号 | 产品名称 |
|-----------------------------|----------|--|
| WB 解决方案 | RA10020 | 2h 极速 WB 即用型全流程试剂盒 |
| | RA10021 | 4h 快速 WB 即用型全流程试剂盒 |
| | RA10042 | 5h 畅享版 WB 全流程试剂盒 |
| | RA10037 | 校准级彩色预染蛋白 Marker (8-180kDa) |
| | RA10038 | 校准级彩色预染蛋白 Marker (10-250kDa) |
| | RA10039 | 校准级高分子彩色预染蛋白 Marker (25-400kDa) |
| TSA 多重荧光染色试剂盒 | RA10008 | TSA 双标三色多重荧光染色试剂盒 (mIHC) |
| | RA10009 | TSA 三标四色多重荧光染色试剂盒 (mIHC) |
| | RA10010 | TSA 四标五色多重荧光染色试剂盒 (mIHC) |
| | RA10011 | TSA 五标六色多重荧光染色试剂盒 (mIHC) |
| | RA10012 | TSA 六标七色多重荧光染色试剂盒 (mIHC) |
| IHC 检测试剂盒 | RA10006 | HRP Anti-Mouse/Rabbit IHC Detection System |
| | RA10007 | Polymer-HRP Anti-Mouse/Rabbit IHC Detection System |
| 抗体标记试剂盒 | RE80004p | 辣根过氧化物酶(HRP)抗体标记试剂盒 |
| | RE80002q | Sulfo-NHS-生物素标记试剂盒 |
| | RE80007p | Cy3 荧光素标记试剂盒 |
| | RE80011p | Fluor488 荧光素标记试剂盒 |
| | RE80017p | Fluor750 荧光素标记试剂盒 |
| | RE80005p | 藻红蛋白(R-PE) 抗体快速标记试剂盒 |
| | RE80040 | PE-Cy7 串联染料抗体快速标记试剂盒 |
| 稳转细胞系构建服务 (免费赠送全膜 WB 验证) | TS-0001 | 过表达稳转细胞系构建 |
| | TS-0002 | 敲低稳转细胞系构建 |
| | TS-0003 | 敲除细胞系构建 |

限于篇幅，更多产品详见官网：<https://www.enkilife.cn>