

产品名称: Glutamine Synthetase (14W15) Rabbit Monoclonal Antibody
产品货号: AMRe11507

产品概述 (Summary)

| | |
|-------------------|---|
| 描述(Description) | Recombinant rabbit monoclonal antibody |
| 宿主(Host) | Rabbit |
| 应用(Application) | WB,IHC,IF-P |
| 种属反应(Reactivity) | Human,Mouse,Rat |
| 偶联物(Conjugation) | Unconjugated |
| 修饰(Modification) | Unmodified |
| 同种型(Isotype) | IgG |
| 克隆(Clonality) | Monoclonal |
| 剂型(Form) | Liquid |
| 保存条件(Storage) | Store at 4°C short term. Aliquot and store at -20°C long term. Avoid freeze/thaw cycles. |
| 储存溶液(Buffer) | Supplied in 50mM Tris-Glycine(pH 7.4), 0.15M NaCl, 40%Glycerol, 0.01% New type preservative N and 0.05% protective protein. |
| 纯化 (Purification) | Affinity purification |

产品应用(Application)

| | |
|-----------------------|---|
| 稀释比(Dilution Ratio) | WB 1:1000-1:5000,IHC 1:200-1:500,IF-P 1:200-1:500 |
| 分子量(Molecular Weight) | 42kDa |

抗原信息(Antigen Information)

| | |
|-----------------------|--|
| 基因名(Gene Name) | GLUL |
| 别名(Alternative Names) | GLNA; GS; GLUL; GLNS; PIG43 ; PIG59; Glutamine synthetase; |
| 基因 ID(Gene ID) | 2752.0 |
| SwissProt ID | P15104 |
| 免疫原(Immunogen) | A synthetic peptide of human Glutamine Synthetase |

研究背景 (Background)

The protein encoded by this gene belongs to the glutamine synthetase family. It catalyzes the synthesis of glutamine from glutamate and ammonia. Glutamine is a main source of energy and is involved in cell proliferation, inhibition of apoptosis, and cell signaling. This gene is expressed during early fetal stages, and plays an important role in controlling body pH by removing

ammonia from circulation. Glutamine synthetase that catalyzes the ATP-dependent conversion of glutamate and ammonia to glutamine (PubMed:30158707, PubMed:16267323). Its role depends on tissue localization: in the brain, it regulates the levels of toxic ammonia and converts neurotoxic glutamate to harmless glutamine, whereas in the liver, it is one of the enzymes responsible for the removal of ammonia (By similarity). Essential for proliferation of fetal skin fibroblasts (PubMed:18662667). Independently of its glutamine synthetase activity, required for endothelial cell migration during vascular development: acts by regulating membrane localization and activation of the GTPase RHOJ, possibly by promoting RHOJ palmitoylation (PubMed:30158707). May act as a palmitoyltransferase for RHOJ: able to autopalmitylate and then transfer the palmitoyl group to RHOJ (PubMed:30158707). Plays a role in ribosomal 40S subunit biogenesis (PubMed:26711351).

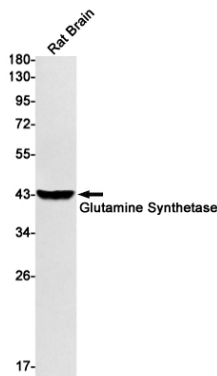
研究领域 (Research Area)

Alanine; aspartate and glutamate metabolism; Arginine and proline metabolism; Nitrogen metabolism;

注意事项 (Note)

For research use only.

图片 (Image Data)



Western blot detection of Glutamine Synthetase in Rat Brain lysates using Glutamine Synthetase antibody(1:1000 diluted).

EnkiLife 优势产品推荐

| 产品类别 | 产品货号 | 产品名称 |
|-----------------------------|----------|--|
| WB 解决方案 | RA10020 | 2h 极速 WB 即用型全流程试剂盒 |
| | RA10021 | 4h 快速 WB 即用型全流程试剂盒 |
| | RA10042 | 5h 畅享版 WB 全流程试剂盒 |
| | RA10037 | 校准级彩色预染蛋白 Marker (8-180kDa) |
| | RA10038 | 校准级彩色预染蛋白 Marker (10-250kDa) |
| | RA10039 | 校准级高分子彩色预染蛋白 Marker (25-400kDa) |
| TSA 多重荧光染色试剂盒 | RA10008 | TSA 双标三色多重荧光染色试剂盒 (mIHC) |
| | RA10009 | TSA 三标四色多重荧光染色试剂盒 (mIHC) |
| | RA10010 | TSA 四标五色多重荧光染色试剂盒 (mIHC) |
| | RA10011 | TSA 五标六色多重荧光染色试剂盒 (mIHC) |
| | RA10012 | TSA 六标七色多重荧光染色试剂盒 (mIHC) |
| IHC 检测试剂盒 | RA10006 | HRP Anti-Mouse/Rabbit IHC Detection System |
| | RA10007 | Polymer-HRP Anti-Mouse/Rabbit IHC Detection System |
| 抗体标记试剂盒 | RE80004p | 辣根过氧化物酶(HRP)抗体标记试剂盒 |
| | RE80002q | Sulfo-NHS-生物素标记试剂盒 |
| | RE80007p | Cy3 荧光素标记试剂盒 |
| | RE80011p | Fluor488 荧光素标记试剂盒 |
| | RE80017p | Fluor750 荧光素标记试剂盒 |
| | RE80005p | 藻红蛋白(R-PE) 抗体快速标记试剂盒 |
| | RE80040 | PE-Cy7 串联染料抗体快速标记试剂盒 |
| 稳转细胞系构建服务 (免费赠送全膜 WB 验证) | TS-0001 | 过表达稳转细胞系构建 |
| | TS-0002 | 敲低稳转细胞系构建 |
| | TS-0003 | 敲除细胞系构建 |

限于篇幅，更多产品详见官网：<https://www.enkilife.cn>