

产品名称: PDI Rabbit Monoclonal Antibody

产品货号: AMRe21290

产品概述 (Summary)

描述(Description)	Recombinant rabbit monoclonal antibody
宿主(Host)	Rabbit
应用(Application)	WB,IHC,ICC/IF,ELISA,IP
种属反应(Reactivity)	Human,Mouse,Rat
偶联物(Conjugation)	Unconjugated
修饰(Modification)	Unmodified
同种型(Isotype)	IgG,Kappa
克隆(Clonality)	Monoclonal
剂型(Form)	Liquid
保存条件(Storage)	Store at 4°C short term. Aliquot and store at -20°C long term. Avoid freeze/thaw cycles.
储存溶液(Buffer)	PBS, 50% glycerol, 0.05% Proclin 300, 0.05%protective protein
纯化 (Purification)	Protein A

产品应用(Application)

稀释比(Dilution Ratio)	WB 1:2000-1:10000,IHC 1:200-1:1000,ICC/IF 1:200-1:1000,ELISA 1:5000-1:20000,IP 1:50-1:200
分子量(Molecular Weight)	Calculated MW:57kD;Observed MW:57kD

抗原信息(Antigen Information)

基因名(Gene Name)	P4HB
别名(Alternative Names)	ERBA2L PDI PDIA1 PO4DB
基因 ID(Gene ID)	5034.0
SwissProt ID	P07237
免疫原(Immunogen)	A synthetic peptide of human P4HB

研究背景 (Background)

Cell localization:Endoplasmic reticulum.This gene encodes the beta subunit of prolyl 4-hydroxylase, a highly abundant multifunctional enzyme that belongs to the protein disulfide isomerase family. When present as a tetramer consisting of two alpha and two beta subunits, this enzyme is involved in hydroxylation of prolyl residues in procollagen. This enzyme is also a

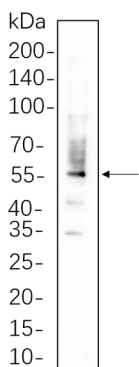
disulfide isomerase containing two thioredoxin domains that catalyze the formation, breakage and rearrangement of disulfide bonds. Other known functions include its ability to act as a chaperone that inhibits aggregation of misfolded proteins in a concentration-dependent manner, its ability to bind thyroid hormone, its role in both the influx and efflux of S-nitrosothiol-bound nitric oxide, and its function as a subunit of the microsomal triglyceride transfer protein complex. [provided by RefSeq, Jul 2008]

研究领域 (Research Area)

注意事项 (Note)

For research use only.

图片 (Image Data)



Hela whole cell lysates were separated by 10% SDS-PAGE, and the membrane was blotted with PDI Rabbit Monoclonal Antibody(1:1000). The HRP-conjugated Goat anti-Rabbit IgG(H + L) antibody was used to detect the antibody.

EnkiLife 优势产品推荐

产品类别	产品货号	产品名称
WB 解决方案	RA10020	2h 极速 WB 即用型全流程试剂盒
	RA10021	4h 快速 WB 即用型全流程试剂盒
	RA10042	5h 畅享版 WB 全流程试剂盒
	RA10037	校准级彩色预染蛋白 Marker (8-180kDa)
	RA10038	校准级彩色预染蛋白 Marker (10-250kDa)
	RA10039	校准级高分子彩色预染蛋白 Marker (25-400kDa)
TSA 多重荧光染色试剂盒	RA10008	TSA 双标三色多重荧光染色试剂盒 (mIHC)
	RA10009	TSA 三标四色多重荧光染色试剂盒 (mIHC)
	RA10010	TSA 四标五色多重荧光染色试剂盒 (mIHC)
	RA10011	TSA 五标六色多重荧光染色试剂盒 (mIHC)
	RA10012	TSA 六标七色多重荧光染色试剂盒 (mIHC)
IHC 检测试剂盒	RA10006	HRP Anti-Mouse/Rabbit IHC Detection System
	RA10007	Polymer-HRP Anti-Mouse/Rabbit IHC Detection System
抗体标记试剂盒	RE80004p	辣根过氧化物酶(HRP)抗体标记试剂盒
	RE80002q	Sulfo-NHS-生物素标记试剂盒
	RE80007p	Cy3 荧光素标记试剂盒
	RE80011p	Fluor488 荧光素标记试剂盒
	RE80017p	Fluor750 荧光素标记试剂盒
	RE80005p	藻红蛋白(R-PE) 抗体快速标记试剂盒
	RE80040	PE-Cy7 串联染料抗体快速标记试剂盒
稳转细胞系构建服务 (免费赠送全膜 WB 验证)	TS-0001	过表达稳转细胞系构建
	TS-0002	敲低稳转细胞系构建
	TS-0003	敲除细胞系构建

限于篇幅，更多产品详见官网：<https://www.enkilife.cn>