

产品名称: Smad2 (Phospho Ser250) Rabbit Monoclonal Antibody  
产品货号: AMRe21461



## 产品概述 (Summary)

产品名称 (Production Name)	Smad2 (Phospho Ser250) Rabbit Monoclonal Antibody
描述 (Description)	Recombinant rabbit monoclonal antibody
宿主 (Host)	Rabbit
应用 (Application)	WB,IHC,ICC/IF,ELISA,IP
种属反应性 (Reactivity)	Human,Mouse,Rat

## 产品性能 (Performance)

偶联物 (Conjugation)	Phospho
修饰 (Modification)	Phosphorylated
同种型 (Isotype)	IgG,Kappa
克隆 (Clonality)	Monoclonal
形式 (Form)	Liquid
存放说明 (Storage)	Store at 4°C short term. Aliquot and store at -20°C long term. Avoid freeze/thaw cycles.
储存溶液 (Buffer)	PBS, 50% glycerol, 0.05% Proclin 300, 0.05% protective protein
纯化方式 (Purification)	Protein A

## 免疫原信息 (Immunogen)

基因名 (Gene Name)	SMAD2 SMAD2;MADH2;MADR2;Mothers against decapentaplegic homolog 2;MAD
别名 (Alternative Names)	homolog 2;Mothers against DPP homolog 2;JV18-1;Mad-related protein 2;hMAD-2;SMAD family member 2;SMAD 2;Smad2;hSMAD2
基因 ID (Gene ID)	4087.0
蛋白 ID (SwissProt ID)	Q15796.

## 产品应用 (Application)

稀释比 (Dilution Ratio)	WB 1:1000-1:5000,IHC 1:100-1:500,ICC/IF 1:200-1:1000,ELISA 1:5000-1:20000,IP 1:50-1:200
蛋白分子量 (Molecular Weight)	Calculated MW:58kD;Observed MW:58kD

产品名称: Smad2 (Phospho Ser250) Rabbit Monoclonal Antibody  
产品货号: AMRe21461

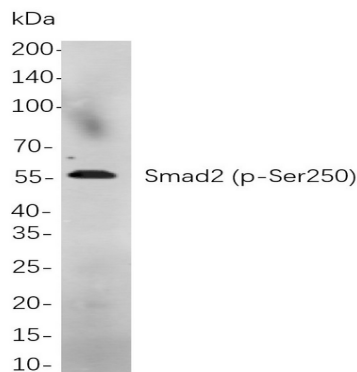


## 研究背景 (Background)

Cell localization: Cytoplasm, Nuclear. The protein encoded by this gene belongs to the SMAD, a family of proteins similar to the gene products of the *Drosophila* gene *mothers against decapentaplegic* (Mad) and the *C. elegans* gene *Sma*. SMAD proteins are signal transducers and transcriptional modulators that mediate multiple signaling pathways. This protein mediates the signal of the transforming growth factor (TGF)- $\beta$ , and thus regulates multiple cellular processes, such as cell proliferation, apoptosis, and differentiation. This protein is recruited to the TGF- $\beta$  receptors through its interaction with the SMAD anchor for receptor activation (SARA) protein. In response to TGF- $\beta$  signal, this protein is phosphorylated by the TGF- $\beta$  receptors. The phosphorylation induces the dissociation of this protein with SARA and the association with the family member SMAD4. The association with SMAD4 is important for the translocation

## 研究领域 (Research Area)

## 图片 (Image Data)



Western blot analysis of lysates from A549 treated with TPA for 48 hours

cells, using Smad2 (p-Ser250) Rabbit mAb. The HRP-conjugated Goat anti-Rabbit IgG antibody was used to detect the antibody.

## 注意事项 (Note)

For research use only .