

产品名称: CD3 Rabbit Monoclonal Antibody

产品货号: AMRe21534

产品概述 (Summary)

描述(Description)	Recombinant rabbit monoclonal antibody
宿主(Host)	Rabbit
应用(Application)	WB,IHC,IF,ELISA
种属反应(Reactivity)	Human,Mouse,Rat,Monkey
偶联物(Conjugation)	Unconjugated
修饰(Modification)	Unmodified
同种型(Isotype)	IgG,Kappa
克隆(Clonality)	Monoclonal
剂型(Form)	Liquid
保存条件(Storage)	Store at 4°C short term. Aliquot and store at -20°C long term. Avoid freeze/thaw cycles.
储存溶液(Buffer)	PBS, 50% glycerol, 0.05% Proclin 300, 0.05% protective protein
纯化 (Purification)	Protein A

产品应用(Application)

稀释比(Dilution Ratio)	IHC 1:200-1:1000;WB 1:1000-1:5000;IF 1:200-1:1000;ELISA 1:5000-1:20000;
分子量(Molecular Weight)	Calculated MW:23kD;Observed MW:23kD

抗原信息(Antigen Information)

基因名(Gene Name)	CD3E T3E
别名(Alternative Names)	T-cell surface glycoprotein CD3 epsilon chain;T-cell surface antigen T3/Leu-4 epsilon chain;CD antigen CD3e;
基因 ID(Gene ID)	916.0
SwissProt ID	P07766
免疫原(Immunogen)	A synthetic peptide of human CD3 epsilon

研究背景 (Background)

Cell localization:Membranous.The protein encoded by this gene is the CD3-epsilon polypeptide, which together with CD3-gamma, -delta and -zeta, and the T-cell receptor alpha/beta and gamma/delta heterodimers, forms the T-cell receptor-CD3 complex. This complex plays an important role in coupling antigen recognition to several intracellular signal-transduction

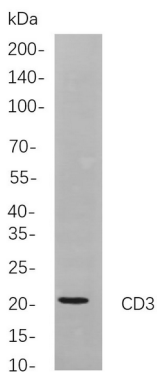
pathways. The genes encoding the epsilon, gamma and delta polypeptides are located in the same cluster on chromosome 11. The epsilon polypeptide plays an essential role in T-cell development. Defects in this gene cause immunodeficiency. This gene has also been linked to a susceptibility to type I diabetes in women. [provided by RefSeq, Jul 2008],

研究领域 (Research Area)

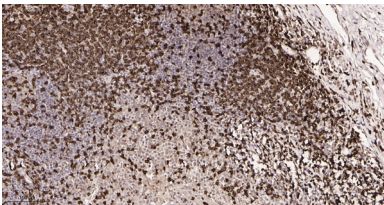
注意事项 (Note)

For research use only.

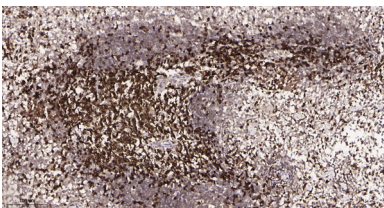
图片 (Image Data)



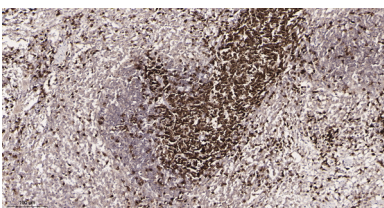
Western blot analysis of lysates from Jurkat cells, using CD3 Rabbit mAb. The HRP-conjugated Goat anti-Rabbit IgG antibody was used to detect the antibody.



Immunohistochemical analysis of paraffin-embedded Human tonsil tissue. 1, CD3 Rabbit Monoclonal Antibody was diluted at 1:200(4°C,overnight). 2, EDTA pH 9.0 was used for antibody retrieval(>98°C,20min). 3,Secondary antibody was diluted at 1:200(room temperature, 30min).



Immunohistochemical analysis of paraffin-embedded Mouse spleen tissue. 1, CD3 Rabbit Monoclonal Antibody was diluted at 1:200(4°C,overnight). 2, EDTA pH 9.0 was used for antibody retrieval(>98°C,20min). 3,Secondary antibody was diluted at 1:200(room temperature, 30min).



Immunohistochemical analysis of paraffin-embedded Rat spleen tissue. 1, CD3 Rabbit Monoclonal Antibody was diluted at 1:200(4°C,overnight). 2, EDTA pH 9.0 was used for antibody retrieval(>98°C,20min). 3,Secondary antibody was diluted at 1:200(room temperature, 30min).

EnkiLife 优势产品推荐

产品类别	产品货号	产品名称
WB 解决方案	RA10020	2h 极速 WB 即用型全流程试剂盒
	RA10021	4h 快速 WB 即用型全流程试剂盒
	RA10042	5h 畅享版 WB 全流程试剂盒
	RA10037	校准级彩色预染蛋白 Marker (8-180kDa)
	RA10038	校准级彩色预染蛋白 Marker (10-250kDa)
	RA10039	校准级高分子彩色预染蛋白 Marker (25-400kDa)
TSA 多重荧光染色试剂盒	RA10008	TSA 双标三色多重荧光染色试剂盒 (mIHC)
	RA10009	TSA 三标四色多重荧光染色试剂盒 (mIHC)
	RA10010	TSA 四标五色多重荧光染色试剂盒 (mIHC)
	RA10011	TSA 五标六色多重荧光染色试剂盒 (mIHC)
	RA10012	TSA 六标七色多重荧光染色试剂盒 (mIHC)
IHC 检测试剂盒	RA10006	HRP Anti-Mouse/Rabbit IHC Detection System
	RA10007	Polymer-HRP Anti-Mouse/Rabbit IHC Detection System
抗体标记试剂盒	RE80004p	辣根过氧化物酶(HRP)抗体标记试剂盒
	RE80002q	Sulfo-NHS-生物素标记试剂盒
	RE80007p	Cy3 荧光素标记试剂盒
	RE80011p	Fluor488 荧光素标记试剂盒
	RE80017p	Fluor750 荧光素标记试剂盒
	RE80005p	藻红蛋白(R-PE) 抗体快速标记试剂盒
	RE80040	PE-Cy7 串联染料抗体快速标记试剂盒
稳转细胞系构建服务 (免费赠送全膜 WB 验证)	TS-0001	过表达稳转细胞系构建
	TS-0002	敲低稳转细胞系构建
	TS-0003	敲除细胞系构建

限于篇幅，更多产品详见官网：<https://www.enkilife.cn>