

产品名称: Cyclin E1 Rabbit Monoclonal Antibody
产品货号: AMRe21594



产品概述 (Summary)

产品名称 (Production Name)	Cyclin E1 Rabbit Monoclonal Antibody
描述 (Description)	Recombinant rabbit monoclonal antibody
宿主 (Host)	Rabbit
应用 (Application)	WB,IHC,ICC/IF,ELISA,IP
种属反应性 (Reactivity)	Human,Mouse,Rat

产品性能 (Performance)

偶联物 (Conjugation)	Unconjugated
修饰 (Modification)	Unmodified
同种型 (Isotype)	IgG,Kappa
克隆 (Clonality)	Monoclonal
形式 (Form)	Liquid
存放说明 (Storage)	Store at 4°C short term. Aliquot and store at -20°C long term. Avoid freeze/thaw cycles.
储存溶液 (Buffer)	PBS, 50% glycerol, 0.05% Proclin 300, 0.05% protective protein
纯化方式 (Purification)	Protein A

免疫原信息 (Immunogen)

基因名 (Gene Name)	CCNE1
别名 (Alternative Names)	CCNE1;CCNE;G1/S-specific cyclin-E1
基因 ID (Gene ID)	898.0
蛋白 ID (SwissProt ID)	P24864.

产品应用 (Application)

稀释比 (Dilution Ratio)	WB 1:1000-1:5000,IHC 1:400-1:1000,ICC/IF 1:200-1:1000,ELISA 1:5000-1:20000,IP 1:50-1:200
蛋白分子量 (Molecular Weight)	Calculated MW:47kD;Observed MW:47kD

研究背景 (Background)

Cell localization:Nuclear.The protein encoded by this gene belongs to the highly conserved cyclin family, whose members

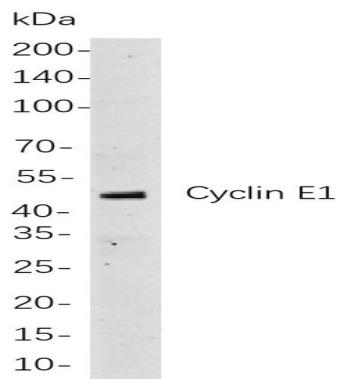
产品名称: Cyclin E1 Rabbit Monoclonal Antibody
产品货号: AMRe21594



are characterized by a dramatic periodicity in protein abundance through the cell cycle. Cyclins function as regulators of CDK kinases. Different cyclins exhibit distinct expression and degradation patterns which contribute to the temporal coordination of each mitotic event. This cyclin forms a complex with and functions as a regulatory subunit of CDK2, whose activity is required for cell cycle G1/S transition. This protein accumulates at the G1-S phase boundary and is degraded as cells progress through S phase. Overexpression of this gene has been observed in many tumors, which results in chromosome instability, and thus may contribute to tumorigenesis. This protein was found to associate with, and be involved in, the phosphorylation of NPAT protein (nuclear protein mapped to the ATM locus), which participates in

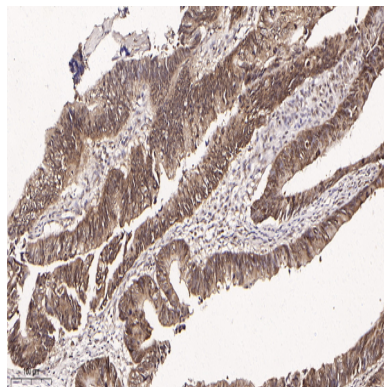
研究领域 (Research Area)

图片 (Image Data)



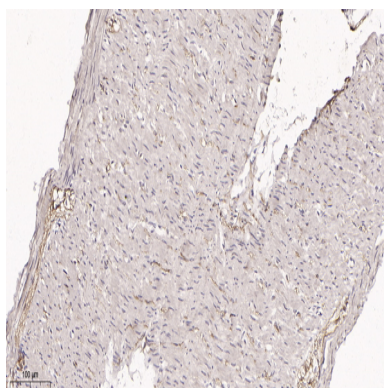
Western blot analysis of lysates from HeLa

cells, using Cyclin E1 Rabbit mAb. The HRP-conjugated Goat anti-Rabbit IgG antibody was used to detect the antibody.



Immunohistochemical analysis of paraffin-embedded human colon tissue. 1, primary Antibody was diluted at 1:200(4°C,overnight). 2, EDTA pH 9.0 was used for antibody retrieval(>98°C,20min). 3,Secondary antibody was diluted at 1:200(room temperature, 30min).

产品名称: Cyclin E1 Rabbit Monoclonal Antibody
产品货号: AMRe21594



Immunohistochemical analysis of paraffin-embedded rat colon tissue. 1, primary Antibody was diluted at 1:200(4°C,overnight). 2, EDTA pH 9.0 was used for antibody retrieval(>98°C,20min). 3,Secondary antibody was diluted at 1:200(room temperature, 30min).

注意事项 (Note)

For research use only .