

产品名称: Lck Rabbit Monoclonal Antibody
产品货号: AMRe85747



产品概述 (Summary)

产品名称 (Production Name)	Lck Rabbit Monoclonal Antibody
描述 (Description)	Recombinant rabbit monoclonal antibody
宿主 (Host)	Rabbit
应用 (Application)	WB,IHC,ICC,IP
种属反应性 (Reactivity)	Human,Rat

产品性能 (Performance)

偶联物 (Conjugation)	Unconjugated
修饰 (Modification)	Unmodified
同种型 (Isotype)	IgG
克隆 (Clonality)	Monoclonal
形式 (Form)	Liquid
存放说明 (Storage)	Store at 4°C short term. Aliquot and store at -20°C long term. Avoid freeze/thaw cycles.
储存溶液 (Buffer)	Purified antibody in TBS with 0.05% sodium azide,0.05%protective protein and 50% glycerol.
纯化方式 (Purification)	Affinity Purification

免疫原信息 (Immunogen)

基因名 (Gene Name)	Lck LCK; Tyrosine-protein kinase Lck; Leukocyte C-terminal Src kinase; LSK;
别名 (Alternative Names)	Lymphocyte cell-specific protein-tyrosine kinase; Protein YT16; Proto-oncogene Lck; T cell-specific protein-tyrosine kinase; p56-LCK
基因 ID (Gene ID)	3932.0
蛋白 ID (SwissProt ID)	P06239.Recombinant protein of human Lck

产品应用 (Application)

稀释比 (Dilution Ratio)	WB 1:500-1:1000,IHC 1:50-1:100,ICC 1:50-1:200,IP 1:10-1:20
蛋白分子量 (Molecular Weight)	Calculated MW: 58 kDa; Observed MW: 58 kDa

产品名称: Lck Rabbit Monoclonal Antibody
产品货号: AMRe85747

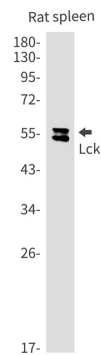
研究背景 (Background)

The Src family of protein tyrosine kinases, which includes Src, Lyn, Fyn, Yes, Lck, Blk, and Hck, are important in the regulation of growth and differentiation of eukaryotic cells. Src activity is regulated by tyrosine phosphorylation at two sites, but with opposing effects.

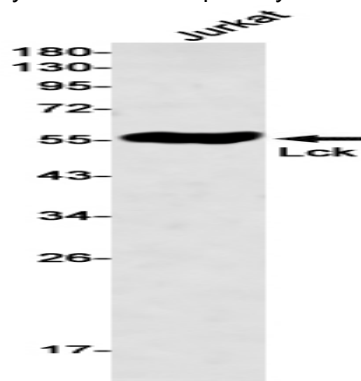
研究领域 (Research Area)

Jak-STAT signaling pathway

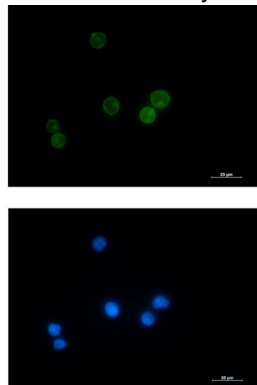
图片 (Image Data)



Western blot analysis of Lck in rat spleen lysates using Lck antibody.



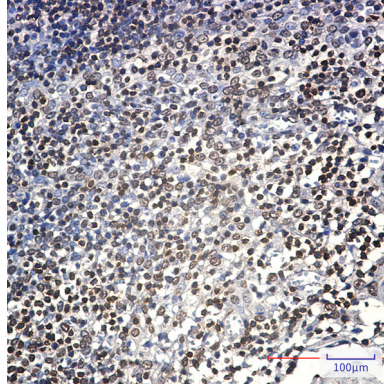
Western blot analysis of Lck in Jurkat lysates using Lck antibody



产品名称: Lck Rabbit Monoclonal Antibody
产品货号: AMRe85747



Immunocytochemistry analysis of Lck (green) in Jurkat using Lck antibody, and DAPI (blue).



Immunohistochemistry analysis of paraffin-embedded Human tonsil using Lck antibody. High-pressure and temperature Sodium Citrate pH 6.0 was used for antigen retrieval.

注意事项 (Note)

For research use only .