

产品名称: GMP Recombinant Human GM-CSF
产品货号: PCH90015

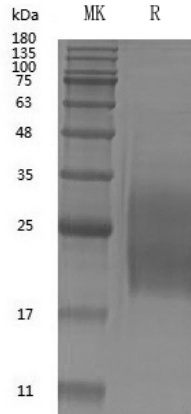


概述 (Summary)

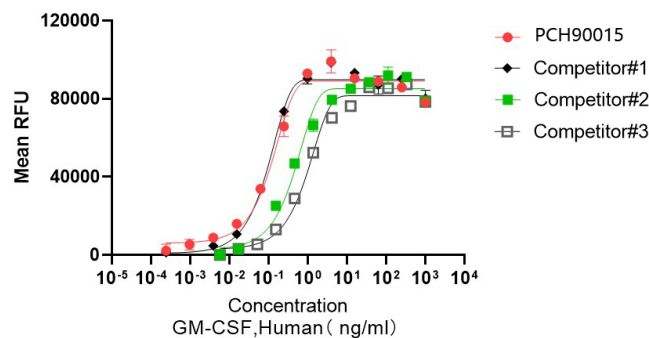
英文全称	GM-CSF
纯度 (Purity)	Greater than 95% as determined by reducing SDS-PAGE
内毒素 (Endotoxin level)	≤10 EU/mg
蛋白构建 (Construction)	Recombinant Human GM-CSF is produced by our Mammalian cell expression system and the target gene encoding Ala18-Glu144 is expressed.
Accession #	P04141
蛋白标签 (Tag)	Tag free
表达宿主 (Host)	Mammalian cell
种属 (Species)	Human
预测分子量 (Predicted MW)	14.5 kDa
蛋白形态 (Form)	Lyophilized
储存缓冲液 (Buffer)	PBS, 5% mannitol and 0.01% Tween 80, pH7.4
运输方式 (Shipping)	The product is shipped with ice bag. Upon receipt, store it immediately at the temperature listed below.
稳定性&储存 (Stability &Storage)	36 months at -20°C to -80°C in lyophilized state. 6 months at -20°C to -80°C under sterile conditions after reconstitution. 7-10 days at 2°C to 8°C under sterile conditions after reconstitution. Please minimize freeze-thaw cycles.
复溶 (Reconstitution)	Always centrifuge tubes before opening. Do not mix by vortex or pipetting. It is not recommended to reconstitute to a concentration less than 100µg/ml. Dissolve the lyophilized protein in distilled water. Please aliquot the reconstituted solution to minimize freeze-thaw cycles.

电泳图 (SDS-PAGE image)

产品名称: GMP Recombinant Human GM-CSF
产品货号: PCH90015



活性验证图 (Bioactivity image)



Measured in a cell proliferation assay using TF-1 cells. The ED50 for this effect is ≤ 0.2 ng/mL.

背景 (Background)

分子别名 (Alternative Names)

Granulocyte-Macrophage Colony-Stimulating Factor; GM-CSF; Colony-Stimulating Factor; CSF; Molgramostin; Sargramostim; CSF2; GMCSF

背景介绍 (References)

Granulocyte-Macrophage Colony Stimulating Factor (GM-CSF) was initially characterized as a growth factor that can support the in vitro colony formation of granulocyte-macrophage progenitors. It is produced by a number of different cell types (including activated T cells, B cells, macrophages, mast cells, endothelial cells and fibroblasts) in response to cytokine of immune and inflammatory stimuli. Besides granulocyte-macrophage progenitors, GM-CSF is also a growth factor for erythroid, megakaryocyte and eosinophil progenitors. On mature hematopoietic, monocytes/ macrophages and eosinophils. GM-CSF has a functional role on non-hematopoietic cells. It can induce human endothelial cells to migrate and

产品名称: GMP Recombinant Human GM-CSF
产品货号: PCH90015



proliferate. Additionally, GM-CSF can also stimulate the proliferation of a number of tumor cell lines, including osteogenic sarcoma, carcinoma and adenocarcinoma cell lines.

注意事项 (Note)

For research use only .