

产品名称: GMP Recombinant Human Insulin
产品货号: PPH90032

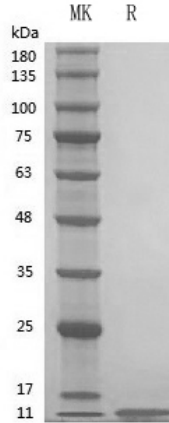


概述 (Summary)

英文全称	Insulin
纯度 (Purity)	Greater than 95% as determined by reducing SDS-PAGE
内毒素 (Endotoxin level)	≤10 EU/mg
蛋白构建 (Construction)	Recombinant Human Insulin is produced by our Yeast expression system and the target gene encoding α chain: G-I-V-E-Q-C-C-T-S-I-C-S-L-Y-Q-L-E-N-Y-C-N & beta chain: F-V-N-Q-H-L-C-G-S-H-L-V-E-A-L-Y-L-V-C-G-E-R-G-F-F-Y-T-P-K-T is expressed.
Accession #	P01308
蛋白标签 (Tag)	Tag free
表达宿主 (Host)	Yeast
种属 (Species)	Human
预测分子量 (Predicted MW)	6 kDa
蛋白形态 (Form)	Lyophilized
储存缓冲液 (Buffer)	Acetic acid
运输方式 (Shipping)	The product is shipped with ice bag. Upon receipt, store it immediately at the temperature listed below.
稳定性&储存 (Stability &Storage)	36 months at -20°C to -80°C in lyophilized state.6 months at -20°C to -80°C under sterile conditions after reconstitution.7-10 days at 2°C to 8°C under sterile conditions after reconstitution.Please minimize freeze-thaw cycles.
复溶 (Reconstitution)	Always centrifuge tubes before opening. Do not mix by vortex or pipetting. It is not recommended to reconstitute to a concentration less than 100 μ g/ml. Dissolve the lyophilized protein in distilled water. Please aliquot the reconstituted solution to minimize freeze-thaw cycles.

电泳图 (SDS-PAGE image)

产品名称: GMP Recombinant Human Insulin
产品货号: PPH90032



背景 (Background)

分子别名 (Alternative Names)

Insulin; INS; IDDM; ILPR; IRDN; MODY10

背景介绍 (References)

Insulin is a peptide hormone with 51 amino acids that plays a crucial role in regulating glucose homeostasis, cell growth, and metabolism . It is produced by the beta cells of the islets of Langerhans in the pancreas and is secreted in response to elevated blood glucose levels, such as after a meal . Insulin is synthesized as a prohormone called preproinsulin, which consists of 110 amino acids. This is processed to proinsulin, which includes the A-chain, B-chain, and C-peptide, and is then further processed to the active form of insulin with the removal of the C-peptide.

注意事项 (Note)

For research use only .