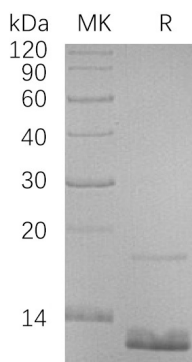


概述 (Summary)

英文全称	CCL18/PARC
纯度 (Purity)	Greater than 95% as determined by reducing SDS-PAGE
内毒素 (Endotoxin level)	<1 EU/μg as determined by LAL test.
蛋白构建 (Construction)	Recombinant Human C-C Motif Chemokine 18 is produced by our E.coli expression system and the target gene encoding Ala21-Ala89 is expressed with a 6His tag at the N-terminus.
Accession #	P55774
蛋白标签 (Tag)	
表达宿主 (Host)	E.coli
种属 (Species)	Human
预测分子量 (Predicted MW)	10.1 KDa
蛋白形态 (Form)	Lyophilized from a 0.2 μm filtered solution of 20mM Citrate, 6% Trehalose, 4% Mannitol, 0.05% Tween 80, pH 4.0.
储存缓冲液 (Buffer)	
运输方式 (Shipping)	The product is shipped at ambient temperature. Upon receipt, store it immediately at the temperature listed below.
稳定性&储存 (Stability &Storage)	Lyophilized protein should be stored at ≤ -20°C, stable for one year after receipt. Reconstituted protein solution can be stored at 2-8°C for 2-7 days. Aliquots of reconstituted samples are stable at ≤ -20°C for 3 months.
复溶 (Reconstitution)	Always centrifuge tubes before opening. Do not mix by vortex or pipetting. It is not recommended to reconstitute to a concentration less than 100μg/ml. Dissolve the lyophilized protein in distilled water. Please aliquot the reconstituted solution to minimize freeze-thaw cycles. Always centrifuge tubes before opening. Do not mix by vortex or pipetting. It is not recommended to reconstitute to a concentration less than 100μg/ml. Dissolve the lyophilized protein in distilled water. Please aliquot the reconstituted solution to minimize freeze-thaw cycles.

电泳图 (SDS-PAGE image)

Product Name: Recombinant Human CCL18 (N-6His)
Catalog #: PEH0262



背景 (Background)

分子别名 (Alternative Names)

C-C Motif Chemokine 18; Alternative Macrophage Activation-Associated CC Chemokine 1; AMAC-1; CC Chemokine PARC; Dendritic Cell Chemokine 1; DC-CK1; Macrophage Inflammatory Protein 4; MIP-4; Pulmonary and Activation-Regulated Chemokine; Small-Inducible Cytokine A18; CCL18; AMAC1; DCCK1; MIP4; PARC; SCYA18

背景介绍 (References)

C-C Motif Chemokine 18 (CCL18) is secreted protein that belongs to the intercrine beta (chemokine CC) family. CCL18 is expressed at high levels in the lung, lymph nodes, placenta, bone marrow, and dendritic cells. CCL18 is a chemotactic factor that attracts lymphocytes but not monocytes or granulocytes. CCL18 may be involved in B-cell migration into B-cell follicles in lymph nodes. CCL18 attracts naive T-lymphocytes toward dendritic cells and activated macrophages in lymph nodes. It has chemotactic activity for naive T-cells, CD4+ and CD8+ T-cells and thus may play a role in both humoral and cell-mediated immunity responses.

注意事项 (Note)

For Research Use Only , Not for Diagnostic Use.