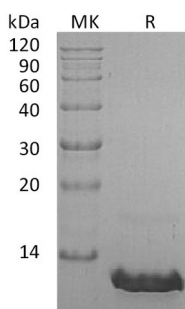


## 概述 (Summary)

英文全称	CCL8/MCP-2
纯度 (Purity)	Greater than 95% as determined by reducing SDS-PAGE
内毒素 (Endotoxin level)	<1 EU/μg as determined by LAL test.
蛋白构建 (Construction)	Recombinant Human C-C Motif Chemokine 8 is produced by our E.coli expression system and the target gene encoding Gln24-Pro99 is expressed.
Accession #	P80075
蛋白标签 (Tag)	
表达宿主 (Host)	E.coli
种属 (Species)	Human
预测分子量 (Predicted MW)	8.9 KDa
蛋白形态 (Form)	Lyophilized from a 0.2 μm filtered solution of 20mM PB, 150mM NaCl, pH 7.4.
储存缓冲液 (Buffer)	
运输方式 (Shipping)	The product is shipped at ambient temperature. Upon receipt, store it immediately at the temperature listed below.
稳定性&储存 (Stability &Storage)	Lyophilized protein should be stored at ≤ -20°C, stable for one year after receipt. Reconstituted protein solution can be stored at 2-8°C for 2-7 days. Aliquots of reconstituted samples are stable at ≤ -20°C for 3 months.
复溶 (Reconstitution)	Always centrifuge tubes before opening. Do not mix by vortex or pipetting. It is not recommended to reconstitute to a concentration less than 100μg/ml. Dissolve the lyophilized protein in distilled water. Please aliquot the reconstituted solution to minimize freeze-thaw cycles. Always centrifuge tubes before opening. Do not mix by vortex or pipetting. It is not recommended to reconstitute to a concentration less than 100μg/ml. Dissolve the lyophilized protein in distilled water. Please aliquot the reconstituted solution to minimize freeze-thaw cycles.

## 电泳图 (SDS-PAGE image)

**Product Name: Recombinant Human CCL8**  
**Catalog #: PEH0273**



## 背景 (Background)

### 分子别名 (Alternative Names)

C-C Motif Chemokine 8; HC14; Monocyte Chemoattractant Protein 2; Monocyte Chemotactic Protein 2; MCP-2; Small-Inducible Cytokine A8; CCL8; MCP2; SCYA10; SCYA8

### 背景介绍 (References)

Human Chemokine (C-C Motif) Ligand 8 (CCL8) is produced by human MG63 osteosarcoma cells. CCL8 shares 62% and 58% amino acid sequence identity with MCP-1 and MCP-3, respectively. All three MCP proteins are monocyte chemoattractants. CCL8 is chemotactic for and activates many different immune cells, including mast cells, eosinophils and basophils, which are implicated in allergic response, and monocytes, T cells, and NK cells that are involved in the inflammatory response. CCL8 elicits its effects by binding to several different cell surface receptors including CCR1, CCR2B and CCR5.

## 注意事项 (Note)

For Research Use Only , Not for Diagnostic Use.