

**Product Name: Recombinant Human IFN gamma (E. coli)**  
**Catalog #: PEH0831**

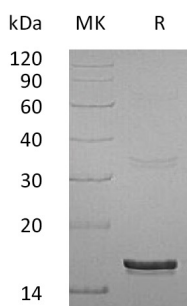


## 概述 (Summary)

英文全称	IFN gamma/IFN-gamma/IFN- $\gamma$ /Interferon $\gamma$
纯度 (Purity)	Greater than 95% as determined by reducing SDS-PAGE
内毒素 (Endotoxin level)	<0.01 EU/ $\mu$ g as determined by LAL test.
蛋白构建 (Construction)	Recombinant Human Interferon Gamma is produced by our E.coli expression system and the target gene encoding Gln24-Gln166 is expressed.
Accession #	P01579
蛋白标签 (Tag)	
表达宿主 (Host)	E.coli
种属 (Species)	Human
预测分子量 (Predicted MW)	16.88 KDa
蛋白形态 (Form)	Lyophilized from a 0.2 $\mu$ m filtered solution of 20mM PB, 5% Sucrose, 4% Mannitol, 0.02% Tween 80, pH7.4.
储存缓冲液 (Buffer)	
运输方式 (Shipping)	The product is shipped at ambient temperature. Upon receipt, store it immediately at the temperature listed below.
稳定性&储存 (Stability &Storage)	Lyophilized protein should be stored at $\leq -20^{\circ}\text{C}$ , stable for one year after receipt. Reconstituted protein solution can be stored at $2-8^{\circ}\text{C}$ for 2-7 days. Aliquots of reconstituted samples are stable at $\leq -20^{\circ}\text{C}$ for 3 months.
复溶 (Reconstitution)	Always centrifuge tubes before opening. Do not mix by vortex or pipetting. It is not recommended to reconstitute to a concentration less than 100 $\mu$ g/ml. Dissolve the lyophilized protein in distilled water. Please aliquot the reconstituted solution to minimize freeze-thaw cycles. Always centrifuge tubes before opening. Do not mix by vortex or pipetting. It is not recommended to reconstitute to a concentration less than 100 $\mu$ g/ml. Dissolve the lyophilized protein in distilled water. Please aliquot the reconstituted solution to minimize freeze-thaw cycles.

## 电泳图 (SDS-PAGE image)

**Product Name: Recombinant Human IFN gamma (E. coli)**  
**Catalog #: PEH0831**



## 背景 (Background)

### 分子别名 (Alternative Names)

Interferon Gamma; IFN-Gamma; Immune Interferon; IFNG

### 背景介绍 (References)

IFN $\gamma$  is the major interferon produced by mitogenically or antigenically stimulated lymphocytes. It is structurally different from type I interferon and its major activity is immunoregulation. It has been implicated in the expression of class II histocompatibility antigens in cells that do not normally produce them, leading to autoimmune disease. Interferon gamma is produced mainly by T-cells and natural killer cells activated by antigens, mitogens, or alloantigens. It is produced by lymphocytes expressing the surface antigens CD4 and CD8. IFN $\gamma$  synthesis is induced by IL-2, FGF-basic, and EGF.

## 注意事项 (Note)

For Research Use Only , Not for Diagnostic Use.