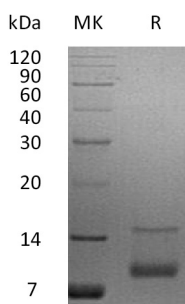


概述 (Summary)

英文全称	IGF-I
纯度 (Purity)	Greater than 95% as determined by reducing SDS-PAGE
内毒素 (Endotoxin level)	<0.5 EU/μg as determined by LAL test.
蛋白构建 (Construction)	Recombinant Human Insulin-like Growth Factor I(4-70) is produced by our E.coli expression system and the target gene encoding Thr52-Ala118 is expressed.
Accession #	P05019
蛋白标签 (Tag)	
表达宿主 (Host)	E.coli
种属 (Species)	Human
预测分子量 (Predicted MW)	7.3 KDa
蛋白形态 (Form)	Lyophilized from a 0.2 μm filtered solution of 20mM NaAc-HAc, pH 4.5
储存缓冲液 (Buffer)	
运输方式 (Shipping)	The product is shipped at ambient temperature. Upon receipt, store it immediately at the temperature listed below.
稳定性&储存 (Stability &Storage)	Lyophilized protein should be stored at ≤ -20°C, stable for one year after receipt. Reconstituted protein solution can be stored at 2-8°C for 2-7 days. Aliquots of reconstituted samples are stable at ≤ -20°C for 3 months.
复溶 (Reconstitution)	Always centrifuge tubes before opening. Do not mix by vortex or pipetting. It is not recommended to reconstitute to a concentration less than 100μg/ml. Dissolve the lyophilized protein in distilled water. Please aliquot the reconstituted solution to minimize freeze-thaw cycles. Always centrifuge tubes before opening. Do not mix by vortex or pipetting. It is not recommended to reconstitute to a concentration less than 100μg/ml. Dissolve the lyophilized protein in distilled water. Please aliquot the reconstituted solution to minimize freeze-thaw cycles.

电泳图 (SDS-PAGE image)

Product Name: Recombinant Human IGF-I (67AA)
Catalog #: PEH0839



背景 (Background)

分子别名 (Alternative Names)

Insulin-Like Growth Factor I; IGF-I; Mechano Growth Factor; MGF; Somatomedin-C; IGF1; IBP1

背景介绍 (References)

Insulin-like growth factor I (IGF1) belongs to the family of insulin-like growth factors that are structurally homologous to proinsulin. Mature IGFs are generated by proteolytic processing of inactive precursor protein containing N-terminal and C-terminal propeptide regions. Mature human IGF-I consisting of 70 amino acids with 94% identity with mouse IGF1 and exhibits cross-species activity. IGF1 binds IGF-1R, IGF-2R, and the insulin receptor and plays a key role in cell cycle progression, cell proliferation and tumor progression. IGF1 expression is regulated by growth hormone.

注意事项 (Note)

For Research Use Only , Not for Diagnostic Use.