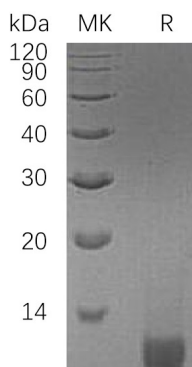


概述 (Summary)

英文全称	IGF2/IGF-II
纯度 (Purity)	Greater than 95% as determined by reducing SDS-PAGE
内毒素 (Endotoxin level)	<1 EU/μg as determined by LAL test.
蛋白构建 (Construction)	Recombinant Human Long Insulin-Like Growth Factor II is produced by our E.coli expression system and the target gene encoding Ala25-Glu91 is expressed.
Accession #	P01344
蛋白标签 (Tag)	
表达宿主 (Host)	E.coli
种属 (Species)	Human
预测分子量 (Predicted MW)	8.91 KDa
蛋白形态 (Form)	Lyophilized from a 0.2 μm filtered solution of 20mM Glycine-HCl, 4% Sucrose, 4% Mannitol, 0.02% Tween 80 (w/v), pH3.0.
储存缓冲液 (Buffer)	
运输方式 (Shipping)	The product is shipped at ambient temperature. Upon receipt, store it immediately at the temperature listed below.
稳定性&储存 (Stability &Storage)	Lyophilized protein should be stored at ≤ -20°C, stable for one year after receipt. Reconstituted protein solution can be stored at 2-8°C for 2-7 days. Aliquots of reconstituted samples are stable at ≤ -20°C for 3 months.
复溶 (Reconstitution)	Always centrifuge tubes before opening. Do not mix by vortex or pipetting. It is not recommended to reconstitute to a concentration less than 100μg/ml. Dissolve the lyophilized protein in distilled water. Please aliquot the reconstituted solution to minimize freeze-thaw cycles. Always centrifuge tubes before opening. Do not mix by vortex or pipetting. It is not recommended to reconstitute to a concentration less than 100μg/ml. Dissolve the lyophilized protein in distilled water. Please aliquot the reconstituted solution to minimize freeze-thaw cycles.

电泳图 (SDS-PAGE image)

Product Name: Recombinant Human LongIGF-II
Catalog #: PEH0842



背景 (Background)

分子别名 (Alternative Names)

Insulin-Like Growth Factor II; IGF-II; Somatomedin-A; IGF2; PP1446

背景介绍 (References)

Insulin-Like Growth Factor II (IGF2) belongs to the insulin family of polypeptide growth factors that is involved in development and growth. Members of this family are structurally homologous to proinsulin, and share higher sequence identity. IGF2 is expressed only from the paternally inherited allele and believed to be secreted by the liver and to circulate in the blood. IGF2 possess growth-promoting activity and can stimulate the proliferation and survival of various cell types including muscle, bone, and cartilage tissue in vitro. IGF2 is influenced by placental lactogen and may play a role in fetal development.

注意事项 (Note)

For Research Use Only , Not for Diagnostic Use.