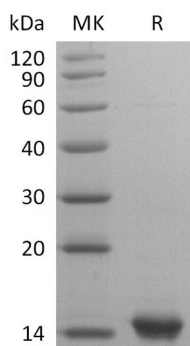


## 概述 (Summary)

英文全称	IL-31
纯度 (Purity)	Greater than 95% as determined by reducing SDS-PAGE
内毒素 (Endotoxin level)	<0.01 EU/μg as determined by LAL test.
蛋白构建 (Construction)	Recombinant Human Interleukin-31 is produced by our E.coli expression system and the target gene encoding Ser24-Thr164 is expressed.
Accession #	Q6EBC2
蛋白标签 (Tag)	
表达宿主 (Host)	E.coli
种属 (Species)	Human
预测分子量 (Predicted MW)	15.8 KDa
蛋白形态 (Form)	Lyophilized from a 0.2 μm filtered solution of PBS, pH 7.4.
储存缓冲液 (Buffer)	
运输方式 (Shipping)	The product is shipped at ambient temperature. Upon receipt, store it immediately at the temperature listed below.
稳定性&储存 (Stability &Storage)	Lyophilized protein should be stored at $\leq -20^{\circ}\text{C}$ , stable for one year after receipt. Reconstituted protein solution can be stored at $2-8^{\circ}\text{C}$ for 2-7 days. Aliquots of reconstituted samples are stable at $\leq -20^{\circ}\text{C}$ for 3 months.
复溶 (Reconstitution)	Always centrifuge tubes before opening. Do not mix by vortex or pipetting. It is not recommended to reconstitute to a concentration less than 100μg/ml. Dissolve the lyophilized protein in distilled water. Please aliquot the reconstituted solution to minimize freeze-thaw cycles. Always centrifuge tubes before opening. Do not mix by vortex or pipetting. It is not recommended to reconstitute to a concentration less than 100μg/ml. Dissolve the lyophilized protein in distilled water. Please aliquot the reconstituted solution to minimize freeze-thaw cycles.

## 电泳图 (SDS-PAGE image)

**Product Name: Recombinant Human IL-31**  
**Catalog #: PEH0921**



## 背景 (Background)

### 分子别名 (Alternative Names)

Interleukin-31; IL-31; IL31

### 背景介绍 (References)

Human Interleukin 31 (IL-31) is a cytokine containing a four-helix bundle structure. It shares several structural and functional characteristics with IL-6, Oncostatin M, LIF, and Cardiotrophin-1. Human IL-31 cDNA encodes a 164 amino acid precursor that contains a 23 amino acid signal peptide and a 141 amino acid mature protein. Human and mouse IL-31 share 24% sequence identity in the mature region. IL-31 is mainly associated with activated T cells and is preferentially expressed by type 2 helper T cells (Th2). IL-31 signals via a heterodimeric receptor complex composed of a gp130 related molecule termed IL-31RA (also GPL and GLMR) and an Oncostatin M receptor (OSMR $\beta$ ). The IL-31 receptor is constitutively expressed by keratinocytes and upregulated by IFN $\gamma$  on monocytes. GPL/OSMR signaling is a strong activator of STAT3 and STAT5, and can also activate STAT1, Jak1, and Jak2 signaling pathways. IL-31 regulated immune responses have been implicated in skin physiology and inflammatory skin diseases. Studies have shown that IL31 induces severe pruritis (itching) and dermatitis in transgenic mice.

## 注意事项 (Note)

For Research Use Only , Not for Diagnostic Use.